

11-1-2007

## November 2007, Volume 2, Issue 3

Shawn Platt

*Roger Williams University*, [splatt@rwu.edu](mailto:splatt@rwu.edu)

Follow this and additional works at: <http://docs.rwu.edu/atsnews>

---

### Recommended Citation

Platt, Shawn, "November 2007, Volume 2, Issue 3" (2007). *e-ATS Newsletter*. Paper 11.  
<http://docs.rwu.edu/atsnews/11>

This Article is brought to you for free and open access by the Academic Technology Services at DOCS@RWU. It has been accepted for inclusion in e-ATS Newsletter by an authorized administrator of DOCS@RWU. For more information, please contact [mwu@rwu.edu](mailto:mwu@rwu.edu).



# What's New at e-ATS?

Roger Williams University

Volume 2, Issue 3  
November 2007

**Did You Know?** Did you know that there are numerous Blackboard recorded tutorials on Sharepoint and within Blackboard? In Blackboard go to the Content Collection tab and click on the Blackboard Tutorial Recordings folder underneath Institution Content. Here you will find a number of recordings that guide you through various Blackboard functions and also demonstrate how to use the Video Capturing System (Apreso) located around campus. If there is a particular recording not listed that you would like to see, contact Robin (x3665).

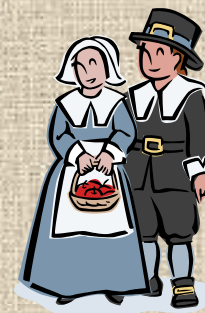
## The Feed

"The Feed" is a New Media experiment Prof. Michael Scully from FCAS Communication Department is conducting with three students: Lorin Richardson, Phil Yacouby and Michael Hurley. The idea behind "The Feed" is to see if college students can produce thoughtful video news and find a viewership on the Internet. Prof. Scully chose to publish on Facebook because just about every student at Roger Williams University is connected to the Facebook community.

"The Feed" team meets Wednesdays to produce a two-minute video news package for the Internet. When finished, the videos get posted to [youtube.com](http://youtube.com) and [Facebook](http://facebook.com). Another reason driving the decision to publish on YouTube is that their YouTube account allowed The Feed to build an archive and attract viewers outside the Roger Williams University Community.

Currently there are ten stories on youtube, including packages about the 9/11 anniversary, RWU's no smoking initiative and President Nirschel's five-year plan for the campus. "The Feed" is also accumulating a fertile following. They've had at least 700 page views and while they cannot track the Facebook traffic, they do have 250 registered "friends" on their page.

"The Feed" is now part of the Communication department's curriculum. Students are enrolled in Special Topics in Journalism: New Media I. In the Spring, Prof. Scully plans on reintroducing the class and enrolling 15 students. In the Fall, the plan is to introduce New Media I and New Media II as core classes inside the Journalism curriculum. You can find "The Feed" videos at [www.youtube.com/user/thefeedRWU](http://www.youtube.com/user/thefeedRWU). For more information about Prof. Scully's New Media class, he can be reached at [mmscully@rwu.edu](mailto:mmscully@rwu.edu).



### Who's Who at ATS?



**Shawn Platt** x3001  
Associate Director of  
Academic Technology Services



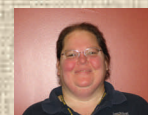
**Scott Lopes** x5305  
Academic Technology  
Services Manager



**Russ Beauchemin** x3637  
Digital Systems  
Support Technician



**Robin Levesque** x3665  
Instructional Technologist



**Bonnie Hatch** x3619  
Instructional Technologist

## First Look at the Roger Williams University's Learning Commons

As most of you are aware, the University Library has begun to transform into a Learning Commons where students have access to combined services within the library. They include all Library Services, Academic Technology Services, and other Academic Support units. We have put together a collage of pictures showing you what it looks like if you have not had a chance to visit, click [here](#). All public PCs from GSB were moved to the Learning Commons and additional ones added. There are presently 95 computers (PCs and Macs) throughout the three floors with printers and scanners available to the RWU community. Please take a look at the collaborative effort of the Library, IT and Facilities has accomplished so far. Enjoy!



### Microsoft Office 2007 File Format Converter

For those that need to work with both Office 2003 and 2007 MS Office 2007 file format converter is located on <http://sharepoint.rwu.edu>. From Microsoft visit:

<http://www.microsoft.com/downloads/details.aspx?familyid=941b3470-3ae9-4aee-8f43-c6bb74cd1466&displaylang=en>







Study carrels available on second floor



Meeting space for faculty and students



Collaborative workstudy space



Printing and Scanning Station

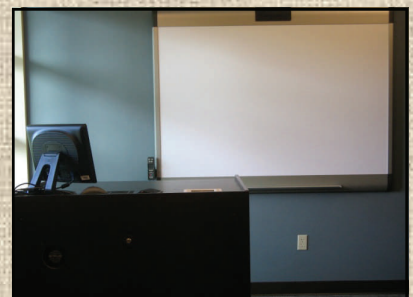
# LEARNING COMMONS



Stay tuned in!



Computers throughout the Learning Commons



The ITDC—MACs, PC, scanning, printing, video editing, video conferencing, classroom podium and more.