

Roger Williams University

DOCS@RWU

---

Alumni Newsletters and Magazines

RWU Archives and Special Collections

---

4-1-1981

## The Bridge, Spring 1981

Roger Williams College Alumni Association

Follow this and additional works at: [https://docs.rwu.edu/alumni\\_news](https://docs.rwu.edu/alumni_news)



Part of the [Higher Education Commons](#)

---

### Recommended Citation

Roger Williams College Alumni Association, "The Bridge, Spring 1981" (1981). *Alumni Newsletters and Magazines*. 31.

[https://docs.rwu.edu/alumni\\_news/31](https://docs.rwu.edu/alumni_news/31)

This News Article is brought to you for free and open access by the RWU Archives and Special Collections at DOCS@RWU. It has been accepted for inclusion in Alumni Newsletters and Magazines by an authorized administrator of DOCS@RWU. For more information, please contact [mwu@rwu.edu](mailto:mwu@rwu.edu).

# The Bridge

Roger Williams College Alumni Magazine

Spring 1981





# RWC Highlights

## Many attend 'Ties That Bind' symposium

A week-long symposium entitled, "Ties That Bind... Exploring Male and Female Roles," was held at the College in February and attracted a diverse attendance to its many sessions. The symposium was sponsored by the College and its Counseling Office, and focused upon opportunities and direction for the exploration of male and female roles that hinder or support personal growth.

### RIFT Performance

Films, workshops, panel discussions and a theatrical performance by the Rhode Island Feminist Theatre (RIFT) were featured.

Many of the College's faculty, staff and administration members participated in the symposium as workshop and panel discussion facilitators, including: Anthony J. Agostinelli, Lorraine Dennis, Temple Fawcett, Nancy Hood, Karen Haskell, Kevin Jordan, Frances Katzanek, Helene Lieb, Francis Mancini, Ronald Mancini, Joseph Neuschatz, Charles Trimback and Nola Watson. The symposium's keynote address was given by Dr. Joan Bean, visiting executive of the Department of Commerce of the American Council on Education.



**TIES THAT BIND:** Members of the College Community and area residents who attended sessions of "Ties That Bind" are shown at one of the seminar's sessions.

Photo by David B. Howard

### Good Participation

Helene Lieb, College Counselor, and one of the symposium's coordinators, noted the event was very well received. "We had people from the College Community and area residents who not only attended, but also participated in the workshops and seminars."

Ms. Lieb explained that good lines of communication among workshop participants were drawn and were helpful in the presentations. "As the Symposium evolved," she said, "we all gained a new understanding of how our personal growth relates to male and female roles."

Included in the symposium was a panel discussion on "The Social Origins of Stereotyping" and a workshop on "Freedom and Burdens of Being Male/Female." Two films, "Joyce at 34" and "Free to Choose" were presented, and "Paper Weight" an original comedy written and performed by the Rhode Island Feminist Theatre was performed in the Student Center Cafeteria. The play examined the work world and the power relationships in a society of women in an insurance company.

The symposium also included programs entitled, "Men Sharing: Men Talking to Men and Women," and "The Great American Male Stereotype." A workshop called "Non-Sexist Childrearing: An Examination into Parenthood," and a showing of the popular film "Unmarried Woman" were also held.

Three programs: "The Future of Macho Man and the Domestic Woman," a film "Killing Us Softly: Advertising's Image of Woman" and a video tape entitled, "Why Change?" concluded the week-long event.



**KAISER SALE RECEPTION:** President Rizzini visits at reception hosted by College in honor of official transfer of former Kaiser Property to Bristol Associates, an organization headed by Rhode Island businessman Lyle Fain. Local governmental and business leaders, as well as members of the College Community attended the luncheon reception.

Photo by David B. Howard

## RWC receives grant from Sears

The College has received one of eight grants distributed by the Sears-Roebuck Foundation to privately supported colleges and universities in Rhode Island. Grants totaling \$12,400 were presented by the foundation. Roger Williams and Salve Regina received grants totaling \$2,500.

John P. Pelletier, a representative of the Sears Foundation made the grant presentation to College President, William H. Rizzini and Thomas V. Falciglia, the College's Executive Director for Development.

The Rhode Island colleges and universities were among the over 1,000 private accredited two and four year institutions across the country which shared in the \$1,500,000 in Sears Foundation funds for the 1980-81 academic year. Funds may be used unrestrictedly as the institutions deem necessary.



**GIFT FOR THE COLLEGE:** John P. Pelletier, a representative of the Sears-Roebuck Foundation, presents check to President Rizzini, Executive Director for Development Thomas V. Falciglia looks on. Grant was one of eight distributed by the foundation to private colleges and universities throughout Rhode Island. Photo by David B. Howard

## Special learning experiences shared at 'Discover'

Plant care, cooking lasagna, how to survive in the wilderness and wine tasting were discovered at the College's "Discover" program — offerings of special interest learning experiences sponsored by the College's Student Life Office in March and April.

The program also included a number of personal growth workshops and discussion groups.

The Discover program included: wilderness survival training, taught by RWC staff member Ken Osborne; a course in cardiopulmonary resuscitation (CPR); plant care, and silk screening.

Faculty member Anthony Agostinelli conducted "Cooking with Tony" as he shared a recipe for lasagna and Dean James Aldrich held a special program on wine tasting.

## Student artists exhibit at RWC

The College Art Program was again sponsor for the annual Southern New England Collegiate Drawing and Print Show at the College Library. The works of outstanding undergraduate artists attending colleges and universities in Southern New England were exhibited.

Cash awards of \$100 and \$75; three \$50 Art Club of Rhode Island Awards and three \$25 honorable mention awards were presented.

Marve Cooper, former exhibition chairman of the Newport Art Association and a former faculty member and lecturer at Rhode Island School of Design was the show's selection juror.

Students who received cash awards at the Show included: Chet Jones, a student at Boston College who received the \$100 first award for his untitled engraving. Jones resides in Brighton, MA.

Also, Ronald Kopcik, of Newport, a student at Roger Williams College, received the \$75 second award for his drawing "Winter Escape." Three \$50 Art Club Awards were presented to Thierry Gentis of Bristol, a Roger Williams College student, for his silk screen "Persimmon"; Kathleen Gorham, also of Roger Williams College, for her drawing, "James," and to Jones for his untitled drawing.

Honorable mention awards of \$25 each were presented to Marc Simmons of Bristol, a Roger Williams College student, for his print "Irma's Lace"; Wendy Tao of Lowell, MA, a student at the University of Lowell, for her still life; and Marlene Millette of Norton, MA, a student at Wheaton College, for her embossed collage "Wishing Tree Box."

## Theatre program presents drama

The College Theatre Program presented Tennessee Williams' classic drama, "The Glass Menagerie" as its Spring Main Season production in March.

The production was directed by theatre program faculty member Betsy Argo who said the play was chosen "Because we felt it was ideally suited for the exceptional talent we have at Roger Williams." The play was done "arena style" Mrs. Argo noted, with

Continued on Following Page



Gordon Argo working on that part of the production and theatre program coordinator William Grand-george in charge of lighting.

#### 'True Atmosphere'

Special attention to detail was given the production, Betsy Argo added, with the costumes and furnishings as closely related to the period as possible. The play reflected a "True Southern atmosphere with real authenticity," she explained.

Cast members included Katie Gale of Stamford, CN as Amanda; Margaret Strassa of Trumbull, CN as Laura; Jon Durham of West Simsbury, CN as Tom and James Griggs of Wales, MA as the Gentleman Caller.



**SCHOLARSHIP AWARD:** Melanie Curt Guimond, second from left, accepts first Diane Drake Scholarship Award from Mrs. Frances Drake of Portsmouth. Scholarship is given annually in memory of Diane Drake, an RWC Administration of Justice major who was murdered in April of 1980. Looking on are Michael J. Haxton an RWC senior from Warwick, who was chairman of the committee establishing the scholarship fund, and at left, Thomas V. Falciglia, executive director of development for the College. Photo by Jos Holman '81



**COMMUNITY SING-ALONG:** Members of the fall semester's Writing for Organizations class taught by career writing faculty member Margaret Coloian sang Christmas Carols on the town green in Bristol. Santa was also on hand to pass out candy treats to area youngsters.

Photo by David B. Howard



**ANCHORS AWAY:** The Ocean State Sailing Center, sponsored by the College, will again be held at the Fulton Campus this summer with special programs for beginner and advanced sailors, as well as young people. There's also a special weekend sailing program offered throughout the summer.

## Early issues of "Life" Donated to College library by Gibsons

The College library has received a donation of a 96-volume bound set of the original *Life* magazine dating from 1883 to 1931, from Mr. and Mrs. Charles Dana Gibson, II of Boca Raton, FL. Mr. Gibson is the grandson of famous illustrator Charles Dana Gibson, who received his start as an illustrator for *Life*.

The collection was termed a "Significant gift to the Library's growing collection of valuable historic material," by Library Director Mrs. Rebecca E. Tildesley. It is housed in the library's special collection room.

Mrs. Tildesley explained that the Gibson family presented the original magazine collection to the College because of their family's connection with the Town of Bristol and their interest in giving students at Roger Williams and area residents access to the historic set.

#### Roots in Bristol

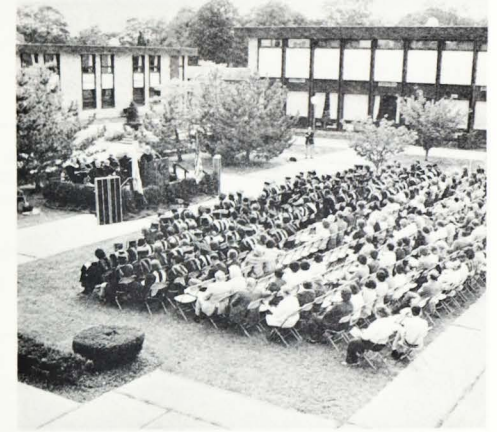
The Gibson family owned a large victorian home on Hope Street in Bristol, known locally as Longfield. Artist Charles Dana Gibson often spent his summers there. His sister, Josephine Gibson Knowlton, a Bristol resident and author until her death several years ago, was one of the models for her brother's famous "Gibson Girl" drawings.

During its early years, *Life* magazine was a humorous weekly publication, similar in format to *Punch*. Its editor, John Amos Mitchell, is credited with discovering and encouraging artist/illustrator Charles Dana Gibson, whose early work was published in the magazine. Gibson became one of America's foremost illustrators and was under contract to both *Life* and *Colliers* for many years. After World War I, Gibson became *Life's* art editor and in 1920 purchased the magazine, owning it until 1932.

*Life* continued publication as a news and photo weekly until 1972, when publication was suspended. Recently, the magazine has returned and is published monthly.

The Roger Williams College Library also owns the first six issues of the 1936-1972 series of the magazine.

"The College Library is very grateful to the Gibson family for their generous gift. It is hoped that our students and residents of Bristol will take advantage of the opportunity to view an especially fine collection of Americana," Mrs. Tildesley noted.



**COMMENCEMENT MAY 30:** The Class of 1981 will receive their degrees at the College's annual Commencement Exercises to be held on Saturday, May 30 at 11 a.m. at the Fulton Campus Green. In the event of rain, the ceremonies will be held at the Naval Education and Training Center, Building 1804, Newport Naval Base. This year's commencement speaker will be noted attorney, activist and founder of the Feminist Party, Flo Kennedy.

Photo by Armand Teixeira '80



# June 30 deadline set for submission of alumni trustee applications

Roger Williams College Alumni still have time to submit an application to become members of the Board of Trustees as representatives of the Alumni Association, or to nominate an Alumni Trustee. Deadline for submission of an application/nomination is June 30, 1981.

An application form is included on this page and should be sent to: Membership Committee, Board of Trustees, President's Office, Roger Williams College, Bristol, RI 02809.

One male and one female trustee from among the alumni seeking the positions will be selected. Eligibility requirements include being a graduate of the College prior to 1976.

Shortly after the May 15 deadline, the membership

committee of the Board of Trustees will certify the nomination of those meeting eligibility requirements and review all applicants and select the three most qualified men and three most qualified women to be the candidates.

These individuals will have their names placed on a ballot which will be mailed to all alumni of the College. Alumni may vote for only one male and one female candidate.

The Membership Committee will examine and count all ballots and the male and female receiving the most votes shall be declared the alumni trustees for a term of three years and until their respective successors are elected and qualified.

# RWC Fund looks to donations to construct new recreation building

The 1980/81 Roger Williams College Fund is raising money for the College's first recreational facility through a special appeal requesting alumni, parents and friends of the College to provide a 'square foot of space' in the new building.

With groundbreaking for the facility scheduled this Spring at the Fulton Campus in Bristol, the fund-raising effort becomes even more important in order to help finance the project.

"It is my hope that everyone who has received the special 1980/81 RWC Fund brochure and has not yet contributed to the effort will do so," Thomas V. Falciglia, executive director for development at the College said recently. "The new recreational facility will be an important part of the College's growth in the years ahead. It is a facility that will be used not only by current students, but also by alumni, parents and area residents served by the College's community relations programs."

The 4.1 million dollar building is expected to be completed during the 1982/83 academic year and will provide spaces for physical education programs, intramural and intercollegiate activities for men and women, locker room facilities, offices and all-purpose areas. The 40,000 square foot building was designed by Castellucci Galli Associates of Providence.

"This second RWC Fund Drive," Falciglia explained, "is aimed at helping construct the new facility. However, gifts to other areas of the College are also welcome and can be indicated when the donation is made. In addition, all donations are tax deductible and may be made on a monthly, quarterly, or annual basis," he added.

The development director noted that enthusiasm for the new recreational facility has been generated through the RWC Fund Drive. "The alumni of the College have begun to respond. I think they recognize the importance of the facility to Roger Williams College."

The new building will be constructed adjacent to the College soccer field and tennis courts. While the building will seat about 2,500 for basketball and more for convocations, concerts, lectures, and commencements, the facility will also have exercise, locker, and all purpose rooms which make it truly a multi-use building.

For the first time, the College's athletic program will have a true 'home court' for men's and women's basketball, women's volleyball and other athletic activities. For the past few years, the College's basketball teams, both men and women, have been playing home games at the St. Andrew School gymnasium in Barrington, a facility that seats only about 350.

The building, in addition to giving the Hawk Hoopsters a real home court advantage, will also allow the College flexibility in establishing new programs for students. With a main room seating capacity of about 3,750 for non-athletic events, the building can be used for concerts, thus attracting residents of area communities to the College.

"Roger Williams College will now have a building available to community groups, particularly in the summer," Falciglia said, "which will help in its conference and seminar recruitment. It means so much to the future of the College that I know our many constituencies will want to help by donating to the 1980/81 fund."

Contributions may be sent to: Development Office, Roger Williams College, Bristol, RI 02809.



**PLEASE MR. POSTMAN:** Members of the Class of 1981, RWC's next group of Alumni Association members personalize letters sent to current Alumni as part of the 1980/81 RWC Fund Drive. Letters told of the need for funds for the new gymnasium, and included a personal message from a student.

Photo by Vera Eisinger '81

**Application Form for Alumni Members to the RWC Board of Trustees**

1. I wish to apply/nominate as a candidate for the position of Alumni Member to the Roger Williams College Board of Trustees.

Name \_\_\_\_\_ Class \_\_\_\_\_

Street \_\_\_\_\_ City \_\_\_\_\_ State \_\_\_\_\_ Zip \_\_\_\_\_

Employer \_\_\_\_\_ Bus. Phone \_\_\_\_\_ Home Phone \_\_\_\_\_

I consider myself/the nominee qualified to serve on the Board of Trustees for the following reasons. . . .  
(Please describe in narrative style. Use additional sheet of paper if needed. List all RWC college and alumni activities. Also list social and civic organizations and any other information you consider helpful to your candidacy.) Resumes may be attached.

(Reasons) \_\_\_\_\_

\_\_\_\_\_

\_\_\_\_\_

\_\_\_\_\_

\_\_\_\_\_

(This application must be submitted to: Membership Committee, Board of Trustees, President's Office, Roger Williams College, Bristol, RI 02809 by June 30, 1981.)



Over 500 have earned degrees

## Open Division offers special approach to college studies

By Renette Pariseau

The Open Division at Roger Williams College serves students seeking a non-traditional approach to earning a degree and is designed to provide a degree program with limited disruption of a student's personal commitments.

The Open Division attracts adults with many different objectives. Some seek a new career, while others are finishing work toward a degree previously interrupted by work or marriage.

One student of the Open Division has been working as a civil engineer for a firm in Fall River for the last six years and has now returned to receive his B.S. in Industrial Technology. "I have 12 courses to complete before receiving my Bachelor degree. The Open Division has allowed me to continue working full-time and finish my degree requirements in three semesters," he said.

### Not Just Classroom Work

The Open Division student is not confined to strictly classroom learning experiences. Independent studies, internships and external courses are some of the ways to complete Open Division courses. Internships are designed so the student can apply the acquired knowledge at an institution or agency. A faculty member or qualified individual works with the student and the institution to provide a course of study that is usually work oriented toward the student's specific career.

Independent studies and external courses are programs designed together by a faculty member and the student. Many faculty members are experienced professionals in the community, in addition to being teachers. The material covered in external courses usually is the same as regular scheduled classes; however the material covered in independent studies is theoretical and specialized to needs of the student's degree program. The Open Division philosophy that learning can be accomplished through independent studies and experience in a particular field, as well as in traditional classroom learning, has proved effective.

The Open Division offers programs which lead to the Bachelor and Associate Degrees in many areas of study. It includes all programs offered by the College's Day Division, as well as six specifically designed majors and minors available through the division. Students are encouraged to share in the plan-

ning of their educational and career goals. Through this process a personalized relationship between a student and a faculty advisor is established.



### Credit for Experience

The philosophies of the Open Division center upon the fact that learning experiences do take place outside of an academic classroom situation. Therefore, the Open Division awards the working adult academic credit for previous work experience.

According to John Stout, director of the division, "It's a great degree program for adults working in many fields where they need a degree to qualify for promotions. A person with past job experience at a day care center can enter the Open Division program for an A.S. in Early Childhood Education," Stout cited, "past college credits can be transferred

Continued on Page 22

## 'College that cares' sponsors program to aid unemployed Bristol workers

By David B. Howard

When about 500 Bristol residents were suddenly out of work after the sudden closing of the PF Industries footwear plant in the town, Roger Williams College provided assistance with a special program designed to help the unemployed workers through the difficult transition period between jobs, as well identify skills of the workers in an effort to help them gain new employment.

The program, the idea of College Cooperative Placement Associate and Grants Officer Ken Osborne, an RWC alumni, was a resounding success.



**HELPING OUT:** Many members of the College Community took part in sessions to provide job counseling and other services to residents of Bristol left unemployed by the sudden closing of PF Industries in the town. The program, originated and coordinated by Cooperative Education Placement Associate and College Grants Officer Ken Osborne, was well received by the many former PF workers.

Photo by David B. Howard

### Resources Available

Osborne, who virtually singlehandedly coordinated the program, arranging for seminar leaders, workshop discussion people and outside resource people, said he had once been in the similar position of being suddenly laid off from work. "I felt that the College had certain resources to provide help for the PF employees, and that there would be many people at Roger Williams who would help out on a volunteer basis."

He was right.

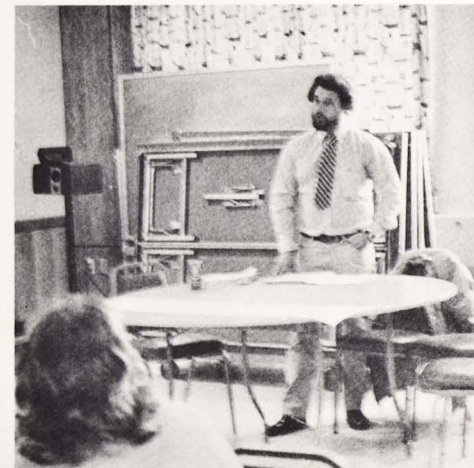
Many faculty members, as well as staff and administration members, volunteered their time and energy to run workshops on such topics as identifying job skills, how to interview for employment, writing a resume, the availability of social agencies to help, and others. In fact there were workshops held for an entire week, most taking place at the Local Union 220 Hall where most of the unemployed workers gathered.

"I think the program showed that the College not only was interested in being a good neighbor to Bristol, but also that it had some important 'people' skills to offer Bristolians," Osborne said. "What's more, it showed the College was willing to help out when someone was in need."

At one of the preliminary discussions held between Osborne and some of the Local 220 officials, one official said, "The College is the only organization which has come up with a concrete program for helping us out."

The workshop week was started at a general membership meeting of the Union at which Osborne explained the various workshops which were scheduled and invited the participation of all the former PF workers. The meeting had been heavily advertised in

Continued on Page 22



**PROGRAM COORDINATOR:** Ken Osborne, College Coop Placement Associate and Grants Officer discusses some of workshops held by College to help support and provide information for Bristol residents left unemployed by the sudden closing of PF Industries.

Photo by David B. Howard



*New, bright atmosphere!*

## Snack bar renovations: It is fun "Bein' Green"

**By Darlene Mikula**

What's bright yellow, green and white, populated by humans and plant life, and serves a light, fast snack or full meal?

It's not McDonald's and it's not the Bronx Botanical Gardens, but it could well be a combination of both. It's the newly renovated Roger Williams College Snack Bar. What was previously a bay-blue, walnut brown, "down-on-your-luck" atmosphere is now a cheery self-serve garden motif dining area. For most students and faculty returning after the winter break, the renovation was both a shock and a surprise.

"When I was given the responsibility of the Student Center in August, I had an idea of what I wanted accomplished," said William O'Connell, Director of Student Services at the College. "I did the Rathskellar first because I wanted the students to have reasons to come down other than for drinking. They have a stereo now and a large television screen. For the snack bar, I wanted to provide a bright pleasant atmosphere for students to gather at night as an alternative to the Rat. Some place nice they could go to grab a hamburger and sit and talk or play cards, or chess or backgammon, where no alcohol is served. Prior to the renovation, the only nice place to go was the Rat. To me, that was like saying you had to drink to have a good time."



**SNACK BAR '81:** The College's Snack Bar in the student center has always been a popular gathering spot for students, staff and faculty. The complete remodeling project has created a bright, airy and comfortable setting.

plete remodeling project has created a bright, airy and comfortable setting.

Photo by Jos Holman '81



**STREAMLINED SERVICE:** Faster service is the rule under the new remodeling of the College Snack Bar. Shorter waits are provided under the new system, which along with the new decor, has brought a lot of smiles.

Photo by Jos Holman '81

### Bright Atmosphere

The major changes in the snack bar area have been to a self-service system, which has cut down on the lines that used to form. Raised seating areas and divisions were also created to provide a relaxed, cozy atmosphere. The philosophy behind the raised areas is so that the snack bar can be easily converted to an "auditorium" when a movie is featured. Roger's Corner Store was restored and moved, a gameroom booth was constructed, some new games were added, and a donated television was installed into the wall above the student's mailboxes. There is also a "no smoking" section and the colors and plants were used to evoke the garden motif.

### Light Feeling was Goal

"I wanted people to be able to walk into the snack bar and smile," said O'Connell. "The object is to have people feel good about themselves when they walk in. I wanted to create a certain 'light' type of feeling."

O'Connell commented that the general response of the students to the renovated area has been positive. "The students have responded favorably to the design, the plants, the new TV area, and the renovated Roger's Corner Store. There have been mixed emotions about the colors." Bright green and yellow were a shocking adjustment for the student's eyes to make.

"I think it's beautiful," said Betty Fasano, one of the supervisors of the snack bar who is a 10-year veteran of the food service area. "The working conditions are good and business has improved. The self-service has made a real difference. The lines have been cut down considerably."

### Work Done by Staff

The work was a community project, with masonry work done by Peter Grimo of the maintenance staff at RWC, and the trellis and fencework was completed by Eddie Borden and John Sully, also of the maintenance staff. John Almeida, who runs the snack bar, provided the plants and will also caretake them. The project was advised by Ross Brown, architect at RWC. Students were also involved. Stacey Wall did the refinishing of the snack bar tables and the artwork was completed by Bob Delsandro. The Lynch Vending Company donated the new television to show their appreciation for the students' business.

"All work was done by our own people," O'Connell said. "It was thought-out and completed by members of the College Community. No outside help was needed or consulted."

Since the renovation, business has doubled in terms of money brought in. Population of the area has tripled. As for the profits the snack bar makes, law requires that any auxiliary monies must be used in the particular building where the money was generated, for repairs or further improvements.

"We plan to redo the cafeteria and the game room in the next two years," stated O'Connell. "Plans have already been completed, but no starting date has been set," he added.



# New College chorus looks to debut; will sing first RWC Alma Mater

by Vera Eisinger

Roger Williams College's Bay Room is alive with the "sound of music" as the RWC chorus is in swing with song, led by the effervescent voice of Joan Roth.

The RWC chorus began in January, rehearsing every Thursday night at the College. Thirty-five people are registered, with the chorus not limited only to students.

"We would like staff members, students, faculty — anyone who wants to sing. There's plenty of room," said Joan Roth, organizer of the chorus.

"What we are in desperate need of right now is male voices. Many of the songs I've chosen, need male voices. We're hoping more men will come in and sing with us," she added.



**SONG LEADER:** Joan Roth, a teacher and resident of Bristol, is the volunteer leader of the new Roger Williams College Chorus. Joan is shown here playing through a song at a recent rehearsal.

Photo by Vera Eisinger '81

## Roger Williams College ALMA MATER

*Words and music  
By Thomas V. Falciglia*

Roger Williams, Alma Mater  
On the shores of Mt. Hope Bay  
Sons and daughters hold thy treasures high  
And thy guidance lights the way.

Roger Williams, Alma Mater  
For the lessons you unfold  
Sons and daughters promise faith, as one  
In your banner blue and gold.

Gentle breezes fan the summer air  
Rippling waves caress thy shore  
Many hearts have felt thy wonderment  
And thy heroes live forever more

Roger Williams, Alma Mater  
Praises flow from hearts e'er true  
Sons and daughters pledge eternal love  
And their loyalty to you.

## Chorus

The tentative program Joan has chosen includes some folk songs, spirituals, religious selections, and the new RWC Alma Mater (see box).

The Alma Mater was introduced at the Class Agent dinner in January, at the Chateau deVillie. Joan had eight Bristol High School students on hand to sing the new song at the dinner.



**SING, SING A SONG:** Members of the College's first choral group practice some numbers under the direction of Joan Roth. The chorus meets each Thursday night in the Bay Room of the Student Center. Alumni are invited to lend their support . . . and voices to the group. Photo by Vera Eisinger



"The kids got a standing ovation. And they, themselves were so taken by the people at the dinner, that two of them asked about attending RWC."

The students who are a part of Joan's chorus seem to truly enjoy themselves. "We adore Joan," one said. "She makes it so much fun. Her energy is our drive. Without her none of this would be possible."

"I sang in high school," said another chorus member. "I'm just disappointed that no one thought of this sooner."

"I have to sing," said one girl. "I'm glad I finally got the opportunity to do something about it."

"I feel so good after having sung for two hours. I love Joan, I love the chorus and I love singing," said another.

Joan is a member of the Bristol Interfaith Chorus, which was formed as part of Bristol's Tricentennial Celebration. "After the Tricentennial, no one wanted to quit, so we kept on singing," she explained.

The members of the Interfaith Choir are mostly adults. They have sung at all the churches in Bristol.

Joan also sings with the Peloquin Chorale in Providence and has sung on national television as well as on records and at concerts here in the United States and abroad. So when Joan was introduced to President Rizzini a few months ago she was well qualified to help establish the RWC chorus.

"I mentioned to President Rizzini I sang in a choir and he introduced me to Mr. Falciglia."

"Mr. Falciglia told me of the new Alma Mater he'd written and how much he thought a chorus should be started here at RWC.

"The more I thought about starting the chorus the more I liked it. So here I am."

The group is hopeful of making its first appearance soon and will sing at commencement. Alumni in the Bristol area interested in joining the chorus may call the Development Office at 255-2311.



# Alumni asked to cast ballots for 1981/82 association officers

The growing Roger Williams Alumni Association with its expanding Class Agent organization, future participation on the College Board of Trustees and many other new activities will hold its annual election of officers for 1981/82.

A mail-in ballot, listing all the nominees and spaces for write-in candidates is included in this issue. To vote, all RWC Alumni may fill out the ballot and mail it by June 8, 1981 to: Development Office, Roger Williams College, Bristol, R.I. 02809.



Lillian Blanchette



Richard Martino



Jesse Ussery



Paul Levesque



Jack Bergantini



Nick Morenzi



Glen O'Hern



Dennis McWeeney



Ann Carey



Pete Kelly

As in the past, alumni will be electing a president, vice president, secretary and treasurer, as well as four executive board officers at large.

Candidates, nominated by the current executive board include:

President — Lillian Blanchette '77; vice president — Richard Martino '76; secretary — Jesse Ussery '73 and treasurer Paul Levesque '72. Nominees for officers at large are: Jack Bergantini '75; Nick Morenzi '75; Michael DeCesare '71; Glen O'Hern '79; Jon Williams '79; Dennis McWeeney '74; Ann Carey '75 and Peter Kelly '75.

## Officers At Large

Alumni will vote for four of the eight candidates for officer at large, with the top four vote-getters elected to the positions. Write in votes for all positions may be made.

"Our Alumni Association is taking its rightful place as a major constituency of the College," Thomas V.

Falciglia, executive director for development said. "I feel the 1980/81 association officers did an excellent job and should be commended. The new slate of candidates all have excellent credentials. I feel 1981/82 will see continued growth of the association."

All of the association candidates have been active in community and College organizations. The candidate for president, Lillian Blanchette '77, was a member of the College's Evening Student Advisory Council for five years and was vice president of the alumni association last year.

She is office manager for Allied Fluorescent and a resident of Pawtucket. She is a volunteer fund raiser for the Rhode Island Affiliate of the American Heart Association.

Richard Martino '76, candidate for vice president, has a Bachelor's degree in business administration. He is the controller of the General Fence Supply Co. in Providence and part owner of the Casa Ravioli Company. A member of the College's Corporation, he has served on the executive committee of the Alumni Association, raising funds for both that organization and the College itself. He resides in Johnston.

Jesse Ussery '73, candidate for secretary, served the alumni association this past year as treasurer. A Providence resident he is chief of environmental services and risk management coordinator for the State of Rhode Island.

The candidate for treasurer, Paul Levesque '72, is a Jamestown resident and served the past year as an officer at large of the association. He is an internal revenue agent with the U.S. Treasury Department and is a member of the Jamestown Rotary Club.

The nominees for officers at large also bring special skills and strong interest to their alma mater.

Nick Morenzi '75 is Branch Sales Manager for American Mutual Insurance Co. and a resident of Cranston. He is a member of the reunion committee for the Class of 1975.

Michael DeCesare '71 is president of the DeCesare Building Co., Inc. and a resident of Providence.

Glen O'Hern '79 is designer for the Fram Corp. and a resident of Cumberland. He is immediate past president of the New England Region of the Association of Evening Students and is a chaperone for the Rhode Island Special Olympics. He is also a volunteer fund raiser for Save the Bay and Meeting Street School.

Jon Williams '79 is a design engineer for Corner and Lada Co., Inc. of Cranston. He is a resident of Bristol and formerly worked as a design engineer with the Waterman Engineering Co. of East Providence. He was president of the Class of 1979 while at RWC.

Jack Bergantini '75 is vice president and co-owner of Simply Plastics Inc. of Warwick. He is on the board of tax assessors in the Town of Exeter, R.I. He is presently the secretary of the RWC Alumni Association. He was on the Student Senate for three years while a student at RWC. He is a resident of West Kingston, R.I.

Dennis McWeeney '74 is an assistant facilities Superintendent & Inventory Controller for the Rhode Island Port Authority & Economic Development Corp., at Davisville. He is an Eagle Scout and quite active in the Scouting program as a District Advancement Committee member and Assistant Scoutmaster for Troop 7 in Cranston.

Ann Carey '75 is a psychotherapist with Counseling Associates of Seekonk, focusing upon marital and family counseling. She was previously associated with Helpmate, a community mental health agency in Seekonk and still serves that agency as a consultant. She has been guest lecturer at many colleges and civic groups on such topics as "The Single Parent" and the "Changing Role of Women." She is a Seekonk, MA resident.

Pete Kelly '75 is an account executive with Merrill Lynch, Pierce, Fenner and Smith in Providence. His major responsibilities include investing of individual and corporate portfolios and major concentration in the tax investment area. He is studying for his Master's of Business Administration degree and is a resident of Warwick.

Results of the RWC Alumni Association election will be published in the Summer issue of *The Bridge*.

...

## OFFICIAL BALLOT FOR ROGER WILLIAMS COLLEGE ALUMNI ASSOCIATION OFFICERS

Cast your ballot for each office listed. Spaces are provided for write-in candidates. You may vote for four of the 18 listed candidates for Officers at Large. Ballots must be returned to: The Roger Williams College Development Office no later than June 30, 1981. All votes will be held in strictest confidence.

### For PRESIDENT

☐ Lillian Blanchette

☐ (Write In)

### For VICE PRESIDENT

☐ Richard Martino

☐ (Write In)

### For SECRETARY

☐ Jesse Ussery

☐ (Write In)

### For TREASURER

☐ Paul Levesque

☐ (Write In)

### For Officers at Large

(Vote for four candidates only)

☐ Jack Bergantini

☐ Nick Morenzi

☐ Michael DeCesare

☐ Glen O'Hern

☐ Jon Williams

☐ Dennis McWeeney

☐ Ann Carey

☐ Pete Kelly

☐ (Write In)

Signature \_\_\_\_\_ Class \_\_\_\_\_



## Sports roundup

# Hawk hoop team bounces back; Randolph sets scoring record

By David B. Howard

The number of victories over the year before had been almost doubled, and the nucleus for an outstanding year in 1981/82 had been established, so considering these two factors, the past basketball season for the RWC Hawks had to be considered a success.

Not that new hoop coach Mike Raffa wouldn't have wanted a few more W's, but with most of the team back next season, Raffa had to feel positive about the program.

Coach Raffa, who previously served as head coach at Barrington College, has a reputation for turning basketball programs around. And he sees a lot of success in the future for the Hawk Hoopsters.

One of the real bright spots of the past year was the play of junior Ed Randolph, a 6'5" forward from Tallahassee, FL, who set a new RWC single season scoring record with 569 points for the 80/81 season.

His season's scoring brought his career total in three years to 1,358 points, just 128 points short of the College's four year record held by Dwight Datcher — a mark Ed's a cinch to break next year.

The Hawks, in finishing at 11-15, as opposed to 6-18 a year before, showed a cohesiveness in the disciplined style of play advocated by coach Raffa. Many of the losses were close ones, and with a break here or there, could have gone the other way.

Next year with Ed Randolph, along with some of the first year players who gained valuable experience this year and other vets back, 1981/82 could be a banner season for the Hawk Hoopsters.

\*\*\*

The RWC hockey team, in its second year under coach Al Soares, recorded an excellent season and made the New England Hockey Conference Playoffs at UMass-Boston, finishing third in the tournament.

Playing its games at Portsmouth Abbey Rink, the Hawk Sextet showed a lot of good skating ability and the talent to come from behind in many games. Next year should also be a good one for the skaters.

\*\*\*

When the season started, it looked like the College's women's basketball team, with some returning veterans, and some tall freshmen, would repeat on last year's excellent season. But when a couple of the girls decided to pass up the season, it meant a long year for the team, which found itself facing much taller opponents all season long.

Yet during the season, the girl hoopsters earned respect for their hustle and determination from

every opponent. More than one coach praised coach Andrew Giagrande's team for its spirit.

And with the possible addition of some needed height next year, it could be a quick return to the fast lane of women's basketball in New England for the team.



**HAWK HOOPSTERS:** The RWC Basketball team, in its first year under coach Mike Raffa, came on strong near the end of the year and with most of the team returning, things look extremely bright for next year. The Hawks were led by junior forward Ed Randolph (32). Photo by David B. Howard

# Students visit London for month's extensive historic preservation study

by Renette Pariseau

While many students spend the month of January recovering from Fall semester final exams, some Roger Williams College students were busy in a totally different academic environment, studying in London, England. The students experienced learning in an innovative study program designed by the College's American Studies area. Two Historic Preservation instructors, Dr. Michael Swanson and Dr. Kevin Jordan, and 28 students journeyed through the city of London and surrounding towns in an extensive study of historic preservation and architectural conservation.

The idea originated as a way to provide an off-campus intersession program. Dr. Swanson was approached to propose a workable program through the American Studies area. After six months of research and correspondence with British contacts, he wrote a proposal in March, 1980 for an intensive foreign studies program in Historic Preservation and Conservation.

The College has conducted, for a number of years, the London Theatre Program, where students, mostly theatre majors, spend an entire semester studying in London.

## Much Planning

The basic curriculum for the program stemmed from a course of study Dr. Swanson attended on Victorian Architecture in London during this past summer. While participating in this program Dr.

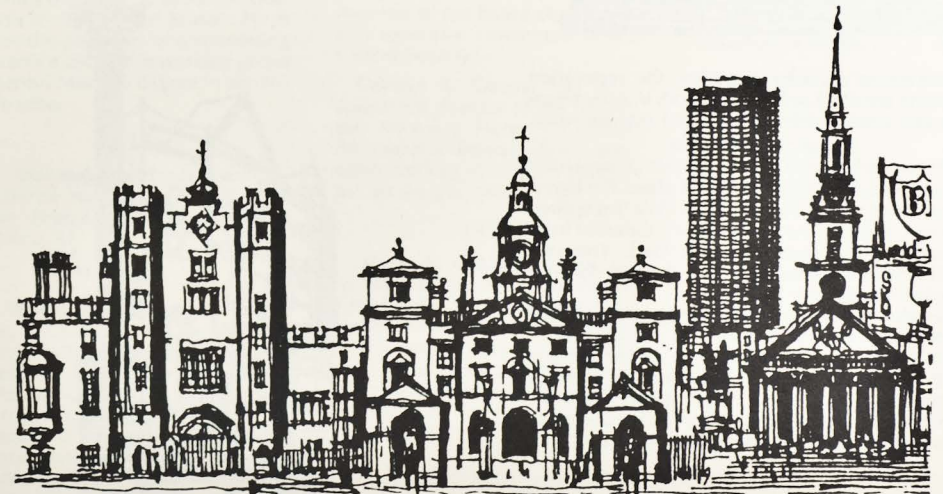
Swanson met with prominent preservation experts who agreed to lecture and share their knowledge with RWC students. By September, he was well into the planning aspects of the Historic Preservation London Studies Program and correspondence with British contacts in order to set specific dates and times for lectures and engagements had been initiated.

Swanson now looks back and smiles with relief at the success of the Historic Preservation London Program. "It was an academic program with a double rationale. American architecture originates from British styles, therefore, our architecture and preservation students would be receiving a sense of technique and methodology about foreign preservation. Equally important, it serves as a general cultural experience that would broaden the perspective of a student in any academic area of study."

## Professional Input

Dr. Swanson arranged tours and lectures by prominent professional figures in the field of historic preservation. "Our students met people involved greatly in preservation and restoration of ancient buildings in and around the London area." Swanson added, "I was most pleased with the level of experienced professionals and their eager desire to meet and speak with our students." He proudly expressed that all but one of the lecturers were published authors in their specialized fields.

Continued on Following Page





## London trip

Preplanning and special arrangements were very important," Swanson explained, noting that during the winter months quite a number of house-museums and architecturally notable country houses are usually closed to the public. "All this preliminary work paid off," Swanson said, "because we did get in many such buildings."

On one tour the group was even personally met at the gates of Knole House, the 365-room country house of the Duke of Baskerville, by the chief architect for the Society for the Protection of Ancient Buildings (SPAB). This organization is comparable to this country's Historic Preservation Society.



On this tour students examined the restoration techniques used at Knole House, both interior restoration of the original furnishings and exterior work.

### Tapestry Restoration

Deborah Stahly, one of the historic preservation majors on the tour was enthusiastic about the tapestry restoration area at Knole House. "We first walked into a very modern work space much different from the exterior of the house," she described. "There we were able to view a great deal of work being done on a 300-year old tapestry bed set."

Deborah said that a volunteer group of women are currently washing and restoring the tapestry to its original condition. "We saw pictures of the tapestry before restoration in which there was no color or pattern because of all the dirt that had accumulated. When the washing was finished, an elaborate Tudor pattern of beautiful rose color could be seen."

The women are currently in the process of restoring the gold threads of the worn away embroidery work. "This is something a preservation student doesn't usually get to see first hand," Deborah added.

The program also set out to view London's cultural institutions, and broaden a student's perspective. Dr. Swanson explained, "I tried to give the students a perspective of English cultural events. These students attended the theatre six times during the month, and some have never been to a play in the States." They saw a play about contemporary British Humor, a Medieval theatre, and a Victorian Musical along with others. Some students also experienced the symphony for the first time, as well as the instructors experiencing the modern cultural explosion called "punk rock," for the first time.

"I'm very pleased with the program. The American Studies Area has voted to run the program again in 1983 if the administration approves. Of course the program will change a little, but it's too early to tell where the changes will be made." Swanson added, "This London Studies Program gave an educational as well as intellectual experience for these students, it gave them the opportunity to explore and experience a process of learning and maturing."



## Class Notes

### 1957

**Fred Hall** has been named vice-president of sales of Burton Industries. Hall, a native of Cranston, RI, joined Burton Industries following its founding in 1970.

### 1971

**Earl Branch** has been appointed assistant treasurer and credit manager of the Nyman Manufacturing Company of East Providence, RI.

**Ronald J. Martel** has completed his doctoral studies in higher education administration.

**John M. Robinson** Has been named by the Rhode Island Society of Professional Engineers as the 1980 "Young Engineer of the Year." Robinson is vice-president of Robinson, Myrick & Associates, Inc.

**Phillip Tetreault** has been appointed to the faculty of Dean Junior College.

### 1973

**Scott Harrison** is presently a tenured teacher in special education for the city of Boston. He is also the president of a counseling practice and is also working on his second Master's degree in administration.

### 1974

**Steven J. Levitt** has been appointed corporate controller for the Engine Tire Col. of Providence, RI.

### 1975

**Ronald J. Levesque** is a Marine 1st Lt. and will be in Iwakuni, Japan with his squadron for the next six months as part of the Marine Corps unit deployment program. While in Japan, Lt. Levesque and his squadron will participate in training exercises with the U.S. 7th Fleet and units from allied nations.

**Debra L. Vierra** has joined the Middletown, RI Police Department, becoming the first woman officer in the history of that department.

**Henry Yeaw** has been elected assistant vice-president in the operations division of People's Bank. He joined People's in Dec. 1967 as manager of the Building and Facilities Dept.

### 1976

**John G. Botelho** was cited for superior performance under a Special Awards Program for the U.S. Savings Bond Division. Botelho is area manager for the Treasury Departments Savings Bond Division in Greensboro, NC.

### 1977

**Phillip Boczanowski** has been engaged to construct homes for 145 Navajo Indian families in New Mexico. Boczanowski is project manager with the Chuska Development Corporation and Morrison-Knudsen Company.

### 1978

**Roger H. Saint Pierre** has been named chairman of the Cancer Crusade in Westport, MA. Saint Pierre is also treasurer to the Great Fall River Unit as well as a member of the board of directors and executive committee of the Cancer Society.

**Gordon K. Cooper** has been appointed director of the Tecumseh Recovery Home for Indian Alcoholics in Boston. He has been chief resident alcoholism counselor for the past year.

### 1979

**Hope A. Heldreth** is working for the Cladrige Hotel in Atlantic City, NJ. She is security supervisor for the hotel and was instrumental in the establishment of the Neptune TWSP crime prevention program in rape prevention which is number one in effectiveness in the country.

## ENGAGEMENTS

**Joseph V. Conley '72** to Deborah J. Clarkin. A May 25 wedding is planned.

**Mark William Hutchins '75** to Joan Marie Nunes. An Oct. 17 wedding is planned.

**John Bouvier Crouse '77** to Jody Williams Rice. An April, 1982 wedding is planned.

## MARRIAGES

**Peter R. Olivier '70** to Elizabeth A. Williams on Dec. 6, 1980 in Providence.

**Timothy William Whelan '75** to Stephanie Pinitore on Jan. 19, 1981 in Wayside, NJ.

**Charles E. Collins, III '78** to JoAnn Proto on Nov. 16, 1980 in Newport.

**Katherine Kimbal Goggin '78** to George Perry Conostas on Nov. 15, 1980 in West Hartford, Ct.

**Nancy Janet Marola '78** to Matthew Egan on Nov. 7, 1980.

**Thomas D. McEachern '79** to Rebecca R. Davis on Nov. 20, 1980, in Danvers, MA.

**Arthurlene Jane Ray '79** to Scott Anthony Catladi on Dec. 12, 1980 in Portland, ME.

## IN MEMORIAM

**Charlotte A. Bottis**, Jan. 6, 1981.

**Francis X. Giblin**, Jan. 25, 1981

**Frank B. Maher**, Honorary, Nov. 19, 1980.

**Michael H. Bloom '77**, Nov. 4, 1980.



## Open Division

Continued from Page 10

to the Open Division from other colleges and an individual can "test-out" in some subject areas."

This person could also receive 'Credit Documentation,' academic credit for past work experience which is properly documented, verified and related to the educational objective. "This should give this person a head start toward that degree," Stout added.

The Open Division pioneered alternative learning experiences. It was developed by a student in 1974, under the guidance of then College President Ralph Gauvey. What began as an experimental independent study in alternate forms of education, ended with a designed proposal for a division of the College that offered a non-traditional approach to education. The College's Academic Council voted to approve the Open Division as the seventh division of Roger Williams College.

### 500th Graduate

In May, 1974, John Stout was appointed as part-time coordinator of the Division and at the end of its first month, over 15 students who were designing their own academic programs, were enrolled. Stout proudly pointed out that in the first year the Open Division had generated enough revenue to keep its seven faculty members employed — who might have been laid off by the Day Division because of budget cuts." Six years later, John Stout is now full-time director of the Open Division, which now employs eight full-time faculty and in May of 1980 graduated its 500th student, Mrs. Elisa Romero.

Mrs. Romero of Middletown, R.I., highly recommends the Open Division to people she works with at a local hospital. Mrs. Romero is pleased with the quality education she received from the College and the Open Division. Mrs. Romero received a B.S. degree in Social and Health Services, and is employed in the counseling unit of the hospital. Mrs. Romero has started her Masters program at Providence College this past fall. "The Open Division instructors made us work independently and read an incredible amount of material. I sometimes hated it, but now I appreciate it, it helped a great deal in preparation for my Masters studies," she added, "I'm always recommending the Open Division," she said.

### Program Will Grow

The Open Division has many more graduates to add to its list this May, an indication that the program has continued to grow. "I'd like to see the division expand, if the idea is acceptable here, why not go to Boston or Connecticut. There are a lot of colleges in Boston, but not one offers a program like we do," coordinator Stout explained. The Open Division's objective would be to utilize the faculty and resources of colleges in the area and also draw on the community, business and government.

With recommendations like Mrs. Romero and other alumni it seems the future of the Open Division looks very successful. The Open Division as an alternative to traditional education has worked very successfully for the Roger Williams College Community.

## College that cares

Continued from Page 11

the local newspapers, and one TV station, reporting on the meeting said on its 6 o'clock news, "... and that's what Roger Williams College — a college that cares — is doing for these unemployed workers."

### Few Jobs Obtained

After the week of programs, Osborne reported that a few jobs had been obtained for the workers, and many had been helped with the skills identification programs and other workshops.

Frank Formisano, president of Local 220 said in a letter to College President Rizzini:

"This letter is to express our thanks and appreciation for the assistance that some of your staff members rendered to us in our time of need; especially in view of the fact that it was of their own volition and on a voluntary basis. The information that was presented to us and other members of our Local was most helpful.

"It is most gratifying to know that there is someone out there who is willing to help.

"Many thanks again to the people who coordinated this program and all other staff members who took part in it."

There's a happy ending for the PF workers, too. A Canadian firm recently purchased the PF plant and has started rehiring many of the Bristolians who were laid off — at least until some government contracts are completed.

The project, which involved a lot of preliminary planning, discussions and plain hard work has served to show that the College IS an important part of the Town of Bristol, and does care about the Town.

## The Notebook

Continued from Page 2

For the second year, the College will also be sponsoring a day camp for youngsters ages six to 12. Directed by College athletic director Hector Massa, the day camp is open to all area youngsters and features many activities including arts and crafts, swimming, athletics and field trips.

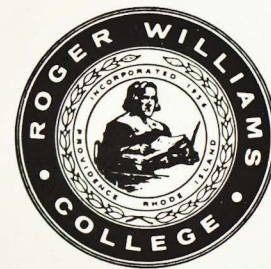
Additional information on registration for a week or weeks at the day camp may also be obtained by calling 401-255-1000.

# SAVE THIS WEEKEND!

September 25, 26, 27, 1981  
*for exciting and expanded*

## HOMECOMING FESTIVITIES and Class Reunion Activities

*(more news to follow)*





**The Bridge**  
Roger Williams College  
Bristol R.I. 02809

Non-Profit Org.  
U.S. POSTAGE  
PAID  
Permit No. 2  
Bristol, R.I. 02809

## SPECIAL EVENTS

- |                |  |
|----------------|--|
| May 1-3        | — <b>SPRING WEEKEND</b>                                    |
| May 15         | — <b>GROUNDBREAKING</b> , New Recreational Bldg. 11 A.M.   |
| May 18-22      | — <b>FINAL EXAM WEEK</b>                                   |
| May 29-Aug. 30 | — <b>OCEAN STATE SAILING CENTER</b>                        |
| May 30         | — <b>COMMENCEMENT</b> , 11 A.M., Fulton Campus Green.      |
| June 22        | — <b>DAY CAMP OPENS</b> , weekly sessions through Aug. 17. |
| June 22        | — <b>QUONSET POINT SUMMER TERM</b> through Aug. 27         |
| July 6-Aug. 14 | — <b>SUMMER SESSION</b> (Day and Evening).                 |

