

Roger Williams University

DOCS@RWU

Alumni Newsletters and Magazines

RWU Archives and Special Collections

2-1-1997

The Bridge, Winter 1997

Roger Williams University Alumni Association

Follow this and additional works at: https://docs.rwu.edu/alumni_news



Part of the [Higher Education Commons](#)

Recommended Citation

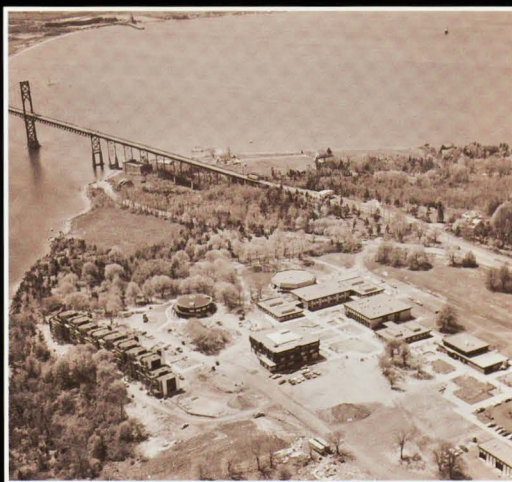
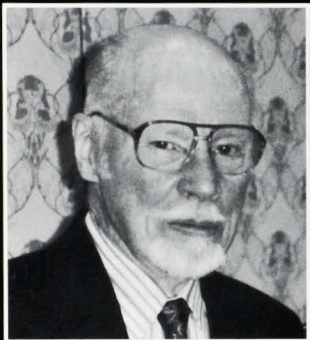
Roger Williams University Alumni Association, "The Bridge, Winter 1997" (1997). *Alumni Newsletters and Magazines*. 61.

https://docs.rwu.edu/alumni_news/61

This News Article is brought to you for free and open access by the RWU Archives and Special Collections at DOCS@RWU. It has been accepted for inclusion in Alumni Newsletters and Magazines by an authorized administrator of DOCS@RWU. For more information, please contact mwu@rwu.edu.

The Bridge

ROGER WILLIAMS UNIVERSITY • WINTER 1997



Connecting With Alumni Past and Present



A MESSAGE FROM THE PRESIDENT

Change is an inevitable fact of life. How we respond to this reality often dictates either success or failure for institutions and individuals alike. Our University has initiated and witnessed dramatic change since the dedication of our Bristol campus nearly three decades ago.

Along with the increase in campus facilities from the original five buildings in 1972 to the 23 of today, we have attained many significant academic milestones. They range from the graduation of our first baccalaureate class in 1970, to the achievement of university status in 1992, to the attainment of ABA Full Approval in 1997 for the School of Law, now named for Board Chairman Ralph R. Papitto.

Our institutional expansion has not only caught the public's attention, it has served to attract a growing student population that is increasingly diverse. As to be expected, our ranks of alumni are reflecting this welcome trend.

Our broadening alumni base, with a legion of former students represented in cities, states and nations far from Rhode Island's borders, has created the need for a unifying means to inform graduates about University developments and to connect them in a substantive way to our evolving institution, their alma mater.

The Bridge is a strong and popular vehicle by which many alumni maintain such an affiliation. To be even more responsive to alumni needs, we are planning to focus two out of four annual issues on primarily alumni interests and concerns. The other two editions will explore topical societal issues in relation to Roger Williams University. You will recall the fall 1996 edition examined the environment as its theme.

The spring issue of *The Bridge* will explore technology as its theme, while the summer issue will highlight Commencement '97 and alumni matters.

This winter 1997 issue is the first of the new editorial series dedicated principally to alumni matters. It has been both instructive and rewarding for me to have the opportunity to travel around the country meeting alumni first-hand at chapter events. I am impressed not only by the successes of our alumni, but also by their commitment to our University. The features in this magazine represent only a small sampling of such stories illustrating alumni achievement and dedication.

An institution of higher education is only as strong as its alumni. I can truly say that the Roger Williams alumni constitute our most important asset. And the University becomes stronger as more alumni maintain a connection with us.

I personally invite all alumni to continue, or to start, sharing your success stories with us. Such an exchange can only serve to further enhance the reputation of our institution, and thereby further increase the value of the degree you earned here.

I invite alumni to become involved in other ways as well, such as volunteering through VISTA, attending alumni and

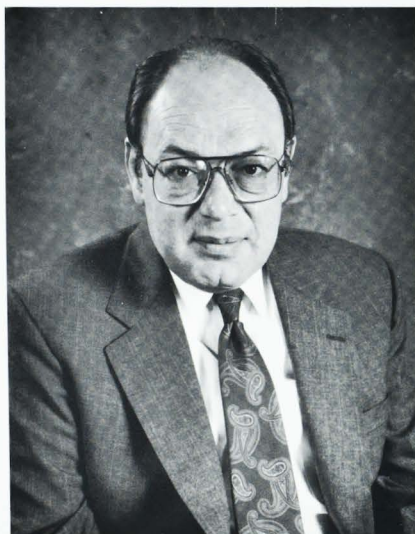
campus events, and supporting the Annual Fund.

Students' ties to their alma mater do not end with graduation. By dedicating this and future issues of *The Bridge* to alumni affairs, we are furthering the University's role as a partner with our graduates. As we develop more and more ways for meaningful connections between Roger Williams University and our alumni, we remain an active part of your journey along the path of life-long learning.

Cordially,

Anthony J. Santoro

Anthony J. Santoro



The Bridge

THE MAGAZINE OF ROGER WILLIAMS UNIVERSITY

© 1997 Roger Williams University
Published by the Department of
Public Relations and Publications

MANAGING EDITOR
Eric R. Bronner
Director of Publications

ART DIRECTOR
Peter Broomhead
Art Director/Graphic Designer

WRITERS

Eric R. Bronner; Dorothea Hesse Doar, APR, Director of Public Relations; Christel L. Ertel, Dean for Institutional Development; Andrea Gural '97; Laura Kutsaftis, Alumni/VISTA Secretary; Candace Maguire, VISTA Director; Nancy Nicholson; Leah Pabst, Marketing Communications Coordinator; Mark Pachenik; Anthony J. Santoro, President; Debora Spano, Director of Law School Advancement; Richard Stewart; Thomas M. Walker, Director of Alumni and Parent Relations

PHOTOGRAPHERS

Stephen Brigidi, inside front cover, Karl Daubman '95 supplied, 23; Kim Fuller, 6-8, 9-11; George Marshall, 2-3, 12, 22; J. Michael Short, 15; David Silverman, 4-5, 21; Volunteer Center supplied, 3; Thomas M. Walker, 16-19



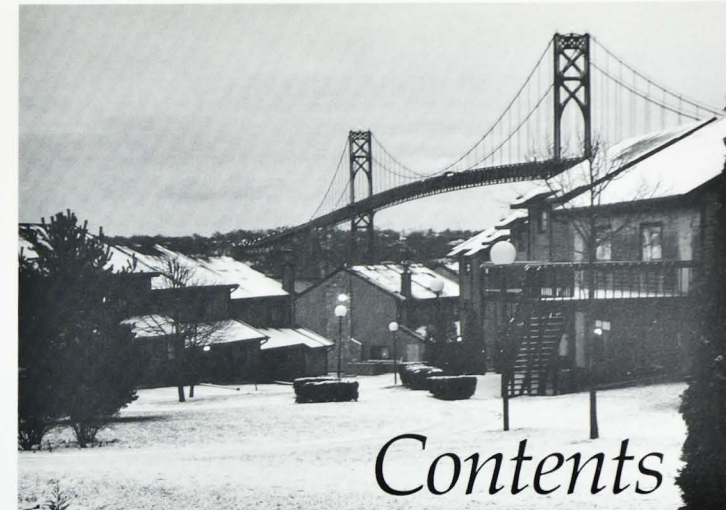
DEVELOPMENT / ALUMNI LIAISONS
Christel L. Ertel, Dean for Institutional Development
Thomas M. Walker, Director of Alumni and Parent Relations

ALUMNI BOARD EXECUTIVE COMMITTEE
Paul Petit '73, President
Marc H. Rosenberg '70, President-elect
Dennis Revens '72, Secretary/Treasurer
Richard Rohleder '85, Past President

Send requests for subscriptions and change of address to:
Joyce Pellegrini, Development Information Systems Manager, Roger Williams University, One Old Ferry Road, Bristol, RI, 02809-2921
Phone: (401) 254-3004; toll-free 1-800-458-7144, Ext. 3004; FAX: (401) 254-3599; e-mail: jwp@alpha.rwu.edu



Printed on recycled, recyclable paper with soy-based inks



Contents

WINTER • 1997

FEATURES



7 Corrections Director Paul Petit '73 Fosters Alumni Spirit

11 Annual Fund Enhances RWU's Excellence



9 Attorney David Szerlag '85 Appeals to Alumni



14 Trade Entrepreneur Elizabeth Munger '86 Supports Admissions

25 Alumni Association Enters Cyberspace

DEPARTMENTS

inside front cover A MESSAGE FROM THE PRESIDENT

2 UNIVERSITY NEWS

Law School Earns ABA Full Approval, and more

4 PEOPLE BRIEFS

New Faculty/Staff on Board

6 FOCUS ON FACULTY

University College Honors David Gingerella '78 and Michael McNamara

7 ALUMNI PROFILES

Successful Alums Stay Involved

14 VISTA UPDATE

Alumni Volunteers Support Admissions

16 CHAPTER NEWS

Activities of the Alumni Association

21 CLASS NOTES

Graduate News

College of Arts and Sciences

Administration of Justice

- **Enrollment** has increased from 453 majors in 1995 to 490 in 1996.
- The **Financial Investigation** course focusing on white collar crime was introduced last fall, taught by William Sharkey of the IRS Criminal Investigation Division.

Biology

- The **Biology** program presented a fall series of forensics lectures organized by Professor Grayson Murphy. Speakers included Cranston Police Detective Pat Sperlongano on the Polylight criminal investigation source; Warwick Police Sgt. Ed Conley on drug-sniffing canines; and Drug Enforcement Special Agent Ray Mansolillo on operations in South America.
- The number of **Marine Biology** majors has increased from 85 to 230 students in six years. Dean Mark Gould, Ph.D., expects the opening of the Center for Environmental and Economic Development, now under construction, to accelerate this trend.

Continuing Legal Education Series

- The **Expanding Role of the Paralegal** was the topic September 28. Shelly Widoff of Boston's Paralegal Resource Center spoke on the program co-presented by the RWU Department of Paralegal Studies and the R.I. Bar Association.
- The **1996 R.I. General Assembly Session** was the subject October 26. R.I. Supreme Court Chief Justice Joseph R. Weisberger was the keynote speaker. The program was co-sponsored by the Secretary of State's Office and the Office of Legislative Counsel of the R.I. General Assembly.
- **Health Care: Ethical and Legal Issues** was the topic November 23. Professor Frederic Reamer, Ph.D., of the RIC School of Social Work spoke on the program, co-presented by the RWU departments of Paralegal Studies and of Social and Health Services.
- A two-week **Law Study Abroad to London and Europe** in July 1997 has been designed for judges and attorneys to earn continuing legal

education credit in international law, alternate dispute resolution, comparative legal systems and ethics. Contact Professor Thomas E. Wright, J.D., at (401) 254-3021.

- The **Creative Writing** program's Ampersand Press displayed books in an exhibit at Newport's Redwood Library last December. The program's Visiting Writers Series presented novelist **Maria Flook '74** and poet John Skoyles last fall. Ms. Flook's novel, *Family Night*, won a PEN American/Ernest Hemingway Foundation Special Citation.

Performing Arts Center

- The **Alive! Arts Series** featured writer Greg Boyd, reading excerpts from his humorous prose poems, fiction and monologues.
- The **Theatre Main Season Series** presented the Tony award-winning



"Dancing at Lughnasa," (pictured left) directed by Professor Peter Wright, and Tennessee Williams' classic "The Glass Menagerie," directed by Professor William Grand-

george. "The No Frills Revue" musical was directed by Associate Professor Dianne Crowell. Senior-project plays included Mark Medoff's "Doing a Good One for the Red Man," directed by Lorna Susi and Christopher Durang's "For Whom the Southern Bellelles Tolls," directed by Amanda McDonald.

- The **Dance Theatre** presented a concert featuring new works by guest dancer Heidi Henderson, of New York City's BeBe Miller Dance Co., and Professor Kelli Wicke Davis and adjunct faculty member Kathy Gordon Smith. Junior dance majors Lori Napolitano and Stephanie Luke also choreographed two pieces. Visiting guest artist Carl Flink, member of NYC's José Limón Dance Co., conducted master classes on campus.

Seniors Amy Carey and Shannon Jette presented an evening of original choreography.

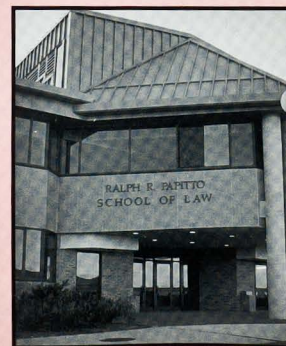
- The **Science/Math Seminar Series** presented fall lectures organized by Professor Skip Pomeroy, Ph.D. Speakers included Dr. Thaddeus Grimes-Gruczka of Cornell University, executive director of the New York City Hospital AIDS research clinical trials unit, on recent advances in AIDS treatment; Dr. Audrey Meyer, dean of the Sea Education Association, on ship-board research opportunities for college students; and **Michael Del Tatto '85**, Brown University faculty member, on reversible gene therapy.

Gabelli School of Business

- **Outreach Established with Prestigious University in China:** Highlights of a far reaching agreement signed last fall with Nanjing University's School of International Business in China include opportunities for student and faculty exchanges, visits by representatives of Rhode Island businesses to China, and development of collaborative research projects with the Gabelli School of Business. The agreement

School of Law Granted ABA Full Approval

February 1997 marks the receipt of full approval from the American Bar Association of the Roger Williams University Ralph R. Papitto School of Law, the highest form of approval granted by the ABA.



comes as a result of efforts by Dean Gary A. Lombardo, Ph.D., a recognized expert on China's business culture.

- The **Koffler Family Foundation Lecture Series** was inaugurated December 3, with nationally renowned entrepreneur Rodger B. Dowdell, Jr., (pictured below) of American Power Conversion (APC), a leading manufacturer of computer systems backup power. Under Mr. Dowdell's tenure as chairman, president and CEO, APC experienced record growth from \$2.4 million in net sales in 1986 to \$515.2 million in 1995. The lecture series is made possible through a grant from the foundation established by the Koffler family, former owners of American Tourister Luggage.
- The **R.I. Paradox User Forum** held its monthly meetings during fall semester at the School. Among the presentations Wim Peterson,



consultant with Apogee Info Systems, talked on Paradox 7.

School of Engineering

- On field trips during fall semester sponsored by the **Construction Engineering Society (CES)**, students met with architects, project managers and construction company managers at sites including Amica Insurance Lincoln, R.I.; Pfizer Pharmaceutical Co., Groton, Conn.; and the Boston central artery tunnel project. CES also took students to the Build Boston Trade Show to view demonstrations and displays on CAD programs, environmental issues, new building materials and construction techniques.
- **Certificates of achievement** were awarded to seniors Rebecca Collins, Shawn Cormier, Jeffrey Faiella, and Jason Smith, and juniors Joseph Law and David Thomas following completion of a 10-hour **OSHA Construction Standard Safety** course sponsored by the R.I. Chapter of the Association of General Contractors.

University College

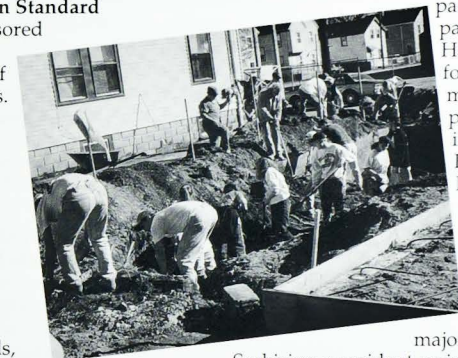
The new **Corporate Communication Certificate** program joins offerings this spring to enhance adults' professional communication skills, improve work performance and increase opportunities for advancement. The program includes courses on media, news writing and reporting, electronic communications, public relations writing, communication in organizations, and law and ethics of public communication. For more information, contact the University College at (401) 254-3530.

Student Affairs

- **Students Participate in AIDS Quilt Display:** Through a program of the Dean's (of Students) Diversity Council, 39 RWU students traveled to Washington, D.C., during Columbus Day weekend to experience the exhibition of the 40,000-panel NAMES Project AIDS Memorial

Quilt. The trip, led by Health Education Director Donna Darmody, was followed up by a display of 16 three-by-six-foot Rhode Island panels of the Quilt at the RWU Library on December 2. Student volunteers ceremoniously read names from the deceased list, monitored the display throughout the day, staffed an AIDS information table and provided support for steady stream of visitors. Through their participation, students hope to help prevent the spread of AIDS and build compassion for those suffering with it.

• The **Volunteer Center for Community and Public Service** held its fifth annual University Day of Service last October 19. Senior business major Evan King, a resident assistant in Willow Hall, and his residents washed cars at Benjamin Church Senior Center. Students Against Drunk Driving took part in an on-campus beach clean-up. Society of Environmental Engineering students



participated in a Habitat for Humanity project in Fall River, Mass. (pictured left). Senior architecture major Sara

Sarkisian, a resident assistant in Maple Hall, and her residents did yard work at Hope House, a housing complex for people living with HIV.

- The **Career Center invites student and alumni to April 9 Job Fair:** About 50 prospective employers are expected at the event to be held in the Recreation Center from 1 - 5 p.m., said Director Patrick Lenna-han. Many will return to campus in the following weeks to conduct interviews. Students can check out summer jobs, internships and part-time jobs. New graduates and alumni can investigate full-time options. Alumni in organizations that could hire RWU graduates are urged to participate as prospective employers. For more information call (401) 254-3224. ♦

PEOPLE BRIEFS

NEW APPOINTMENTS

Admissions

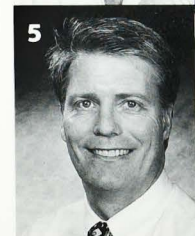
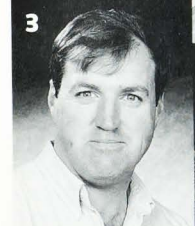
- **Michael T. Pezzi**, of Pawtucket, admissions counselor, most recently served as an enrollment management assistant at North Country Community College, New York. He has a B.S. in business management from Providence College.
- **Kelly D. Rivers**, of Bristol, admissions counselor, previously served as alumni admissions chair at Middlebury College, Tennessee, where she earned a B.A. in economics.
- **Stacy Shmaruk-Crooks**, of Lincoln, admissions counselor, previously served as assistant to the admissions administrator at Brown University, where she was responsible for coordination of the Dartmouth-Brown Internship Program. She earned a B.A. from Wheaton College, and is working on an M.S. at URI.

College of Arts and Sciences

1. **Richard Audet**, Ed.D., of Swansea, Mass., assistant professor of education, recently taught high school science in Dartmouth, Mass. He was also a science specialist for the Chelsea/Boston University Partnership, and has conducted science education research seminars throughout the region. He holds an A.B. and an M.S. from Providence College, an M.S. from Eastern Connecticut State University, and an Ed.D. from Boston University. He recently presented the paper, "GIS in K-12 Education: Examining the Implementation Issues," at the International Symposium on Geographic Information Science in Higher Education.
2. **M. Rebecca Leuchak**, Ph.D., of Cranston, assistant professor of art, has a special interest in medieval and African art. She has worked with the Philadelphia Museum of Art, the Davis Museum, and the Metropolitan Museum of Art. Her background includes teaching at Hobart and William Smith Colleges, Connecticut College, Wellesley College and RISD. She is a fellow of the Center for Arts and Technology at Connecticut College. She earned a B.S. from Georgetown University, an M.S. from the University of Pennsylvania, and an M.A., an M.Ph., and a Ph.D. from Columbia University.

3. **Timothy Scott**, Ph.D., of Little Compton, assistant professor of biology, has extensive experience in oceanography and aquaculture. He worked at Okeanos Ocean Research Foundation and served as an advisory board member of the Sustainable Ecosystems Institute, Inc. He has taught at SUNY-Stony Brook, Dowling College and the Sea Education Association, a semester at sea program based in Woods Hole—which, through Professor Scott's initiation, is being offered to RWU students for the first time this spring. His B.S. and Ph.D. are from SUNY-Stony Brook.

4. **Stephanie Picolo Sweet**, Ph.D., of North Providence, assistant professor of criminal justice, earned her B.A., M.A., and Ph.D. from the University of Maryland. She has worked for Aspen Systems, the Office of National Drug Control Policy, and Koba Associates, Inc., and takes a special interest in computers and criminology. She recently presented papers on "Perceptions of the Police Role" and "Citizen Attitudes Towards the Use of Hot Pursuits."



School of Architecture

- **Celine Larkin**, AIA, of Larkin Tenney Architects and a member of the RWU adjunct faculty; and **Raj Saksena**, FAIA, dean, served as judges in *Rhode Island Monthly* magazine's second annual architecture design awards competition, published in the October 1996 issue.

Gabelli School of Business

- **Gary A. Lombardo**, Ph.D., dean, has been appointed to the Small Business Administration's Regional Advisory Council, and elected to the Board of Directors of the Bristol County Chamber of Commerce. He is responsible for initiating the RWU agreement with Najing University, China (see page 2).
- The following business executives have been chosen to serve on the School's newly established **Advisory Board**: **Robert J. Avila**, president, R.J. Avila Associates; **Anne B. Bates**, president, Bristol County Chamber of Commerce; **F. Steele Blackall III**, president/treasurer, Quest for Excellence; **Peter S. Damon**, president, Bank of Newport; **Anne L. Langlois**, regional vice president, Citizens Bank; **Bruce Linton**, vice president, New Enterprises, BBN Planet; **John A. Malafronte**, vice president, investments, Prudential Securities, Inc.; **Harold M. Metts**, representative, District 19, Providence; **Ian Y. Morrison**, management consultant; **John Ricottilli, Jr.**, senior vice president, Taco, Inc.; **R. Gregory Somerville**, vice president, Gabelli Asset Management Co., Inc.; **Howard Sutton**, senior vice president and general manager, The Providence Journal Company; **Stephen L. Taglianetti '73**, president, Alga Plastics; **Raymond E. Tessier**, executive vice president, the Quill Company; and **Robert R. Wheeler**, president, AFC Cable Systems.

College of Arts and Sciences

- **Ernest A. Greco**, Ph.D., associate professor of political studies, and **Joshua Stein**, Ph.D., professor of history, spoke at the New England Historical Association annual fall meeting held on campus October 19. Professor Stein chaired the discussion of the European Political Union, and Professor Greco spoke in the Latin America and U.S.A. session.
- **Richard Heavers**, Ph.D., professor of physics, recently participated in a short field course, "The Paleobiology of the Dinosaurs," sponsored by the National Science Foundation.
- **Mark Sawoski**, Ph.D., professor of political science, was elected a full member of the U.S. Council on Foreign Relations for his participation in the Bosnia-Herzegovina peace talks in Dayton.

Administrators

- **Michael J. Cunningham**, assistant to the dean of students, has been named to the Board of Directors of the National Orientation Director's Association.
- **Forrest Edward**, director of purchasing, has been named a lifetime certified professional by the American Purchasing Society, Inc.
- **Margaret Norton '79**, CFRE, has returned to the Development Office as director of corporate and foundation relations after serving as director of development for Rhode Island Project AIDS for a year and a half. She coordinates all grants for the University and plays a leading role in foundations and corporations relations. She served as director of grants and development research at RWU from 1989 to 1995.

School of Law

- **Matthew Harrington**, J.D., LL.M., of Kingston, assistant professor of law and co-director of the Marine Affairs Institute, recently presented a Bankruptcy Seminar for the Volunteer Lawyer Program of the Rhode Island Bar Association.
- **Andrew Horwitz**, J.D., of Pawtucket, assistant professor of law and director of the Criminal Defense Clinic, is a member of the Executive Committee of the Rhode Island Association of Criminal Defense Lawyers as well as a member of the Board and Legal Committee of the Rhode Island Affiliate of the ACLU.
- **Bruce Kogan**, J.D., LL.M., of Bristol, associate dean of academic affairs and professor of law, is a member of the Planning Committee for the U.S. First Circuit Judicial Conference to be held in Providence in the fall. He is also special counsel to the National Education Association-Rhode Island.
- **John E. Ryan**, J.D., LL.M., of Bristol, dean and vice president and professor of law, is vice-chairman of The Access Group, a private non-profit organization providing loans for graduate students on a national basis.
- **Verna Sanchez**, J.D., of Bristol, associate professor of law, recently chaired a panel on "Legal Imperialism" at the Law and Society Association's annual meeting held in Scotland.
- **Louise Teitz**, J.D., of Providence, associate professor of law, is the vice chair of the International Litigation Committee of the International Law Section of the American Bar Association.
- **Robert H. Whorf**, J.D., of Bristol, associate professor of law, is counsel to the Rhode Island State Commission for Criminal Justice.
- **David Zlotnick**, J.D., of Providence, assistant professor of law, is a member of the Advisory Committee to Families Against Mandatory Minimums and has helped the defense lawyer in the case of *U.S. v. Laborite* to prepare oral arguments prior to appearing before the United States Supreme Court.
- He is also pro bono co-counsel on a drug case in Florida, *U.S. v. Tom Petty*.

5. **Cliff Timpson**, Ph.D., of Tiverton, assistant professor of chemistry, focuses research on environmental issues. He has worked for Golden West Refineries, Borax Research, and Fluor Engineers. He has also conducted chemical research and development for the Tennessee Valley Authority. He has taught at the University of North Carolina-Chapel Hill, where he earned his Ph.D. He earned his B.S. from California State University-Fullerton.

School of Architecture

6. **Charles Nicklies**, Ph.D., R.A., of Bristol, assistant professor of architectural history, has been an excavation architect with the Princeton University archeological expedition in Cyprus for the past three years. His research interests include ancient, medieval, Renaissance and Islamic architecture. He has taught at Wheaton College, the University of Arizona and the University of Kentucky. He earned his B.Arch. from the University of Kentucky, and an A.M. and a Ph.D. from the University of Illinois.

Gabelli School of Business

7. **Allan MacQuarrie**, Ph.D., C.P.A., of Portsmouth, assistant professor of accounting, has taught at UMass-Boston, Wheeling Jesuit College, and Pennsylvania State University. He has worked for Joy Technology and Rockwell International. He has a special interest in health care financial management. His degrees include a B.S. from Salem State College, an M.B.A. from Duquesne University, and a Ph.D. from Pennsylvania State University.
- **Kathleen S. Micken**, D.B.A., assistant professor of marketing, joined the faculty in January. She will be highlighted in the next issue.
8. **Robert F. Mulligan**, Ph.D., of Bristol, assistant dean, has served on the faculties of SUNY-Binghamton and Clarkson University. He also taught and conducted research on international economic policy at the Keil Institute of World Economics in Germany. He has researched the application of modern statistical and econometric theory to areas such as business cycles, options pricing and productivity measurement. His degrees include a B.S. from the Illinois Institute of Technology, and an M.A. and a Ph.D. from SUNY-Binghamton.

Public Relations and Publications

9. **Peter Broomhead**, of Barrington, art director/graphic designer, was previously vice president and co-creative director at Lawrence and Brooks Advertising, Providence. He designed three out of six winning ads that sell *Rhode Island Monthly* magazine's November 1996 issue. With over 20 years of experience in the advertising/design field, he is responsible for the design of all University publications, including academic, admissions and development materials, *The Bridge*, advertisements, and School of Law materials.
10. **Leah A. Pabst**, of Raynham, Mass., marketing communications coordinator, is responsible for the administering of admissions marketing and advertising. With four years of experience in higher education, she previously was publications assistant for Bridgewater State College. She earned a B.A. in English/writing from Bridgewater and is completing an M.A. in communication studies.



PEOPLE BRIEFS

Focus on Faculty



University College Honors Gingerella '78 and McNamara

Adult-learners are a unique group of students. Many of them must balance the demands of personal and professional commitments with their academic work. Teachers who understand adult students' unique needs and maintain a strong learning atmosphere in class are valuable to both the students and to the educational institution.

In 1992, RWU's University College (UC) established an award, separate from the University at-large Excellence in Teaching Award, to distinguish faculty who go the extra mile in their classrooms. The UC's Outstanding Teacher Award is given annually to a faculty member, selected by student nominations, who teaches in the Evening or Open Program.

David Gingerella '78 (standing), adjunct faculty of accounting and business ethics, and Michael McNamara, adjunct faculty of mathematics, are the most recent recipients of the award.

David, who also serves as RWU director of student services, bursar, and acting registrar, has been teaching for the UC for six years. An RWU graduate with a B.S. in accounting, he received an M.B.A. from Rensselaer Polytechnic Institute, and has over 15 years of work experience in accounting and management. The 1995 award recipient, David was nominated by students who, according to John Stout, UC dean, "described David's teaching style as friendly, cordial, and so interactive that they felt like partners in the learning process."

Michael, the 1996 award recipient, earned an A.B. and an M.A. in mathematics from the College of Holy Cross and the University of Washington, respectively. Michael, who also teaches mathematics and computer science at La Salle Academy, has taught at RWU for nearly 20 years. "I love mathematics," he explains "I love seeing students learn and grow, and I learn with them."

According to John Dawson, UC assistant dean, "Michael has strong teaching skills, empathy for his students, and spends much time helping them learn. In the years that he's been with us, Michael has distinguished himself as a superlative teacher." — Leah Pabst ♦

ALUMNI PROFILE

Fostering Alumni Spirit

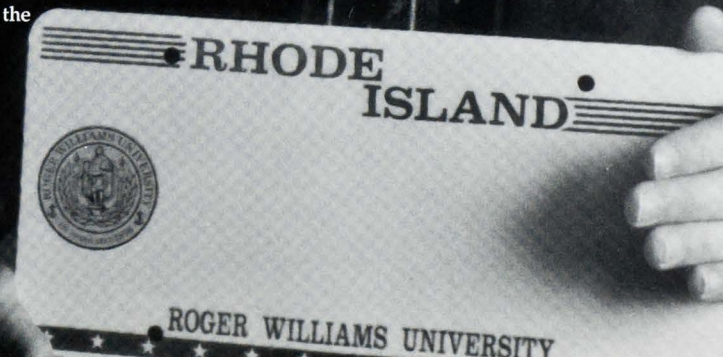
Paul Petit '73 Oversees Productivity on his Job—and Promotes Graduate Pride in the Alumni Association

by Richard Stewart

Paul Petit '73, president of the RWU Alumni Board, heads an operation with annual sales of some \$4 million and a work force drawn almost entirely from Rhode Island's prison population. Associate Director of the R.I. Department of Corrections, he runs the Industries Division, a unit that uses inmate labor in 15 different manufacturing and service businesses behind prison walls.

"Most people think only license plates are made in the prison," says Paul. "But we also manufacture office furniture, janitorial products, the clothing inmates wear; we even make our own laundry detergent," he adds. Production of latex paint, both for internal use and to sell, is in the planning stage.

(continued on page 8)



Other prison businesses include printing, sign making, auto body work and automotive repairs. Crews of minimum security prisoners also work outside the prison walls, painting state offices, moving furniture, caring for the grounds of the Statehouse and Waterplace Park in Providence.

"Some people say you can't get a job outside making license plates, but certainly if we teach inmates a work ethic and the responsibility of having to go to a job every day to turn out a product, caring about quality and on-time delivery and staying at that job, I think we've accomplished something," he says. "We certainly have an obligation to do that."

Paul's first job in the prison system was conducting workshops to teach inmates how to play the guitar

"Roger Williams definitely contributed to my being able to open the doors of opportunity that appeared throughout my career."

in an Arts-in-Corrections program. He had studied guitar since he was 12 and played in a dance band he formed with friends. After graduation from Roger Williams, he opened a music shop, where he taught guitar and sold and repaired instruments.

The prison guitar workshops lasted five years, until an opening in the carpentry shop area came up. He applied and got the job. "I taught in the system for nearly five years, so I knew my way around the institution and had the respect of staff and inmates," he says. He took over the shop, then worked his way through most of the other manufacturing operations in the unit.

Once during an extended lockdown, he made license plates.

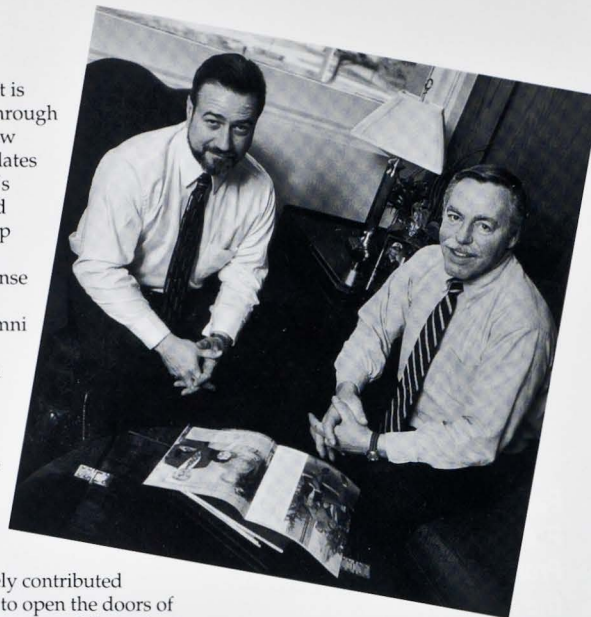
Currently his unit is about half-way through producing the new "wave" license plates for Rhode Island's 800,000 registered vehicles. The shop also makes the special RWU license plate, available through the Alumni Association.

Paul has been volunteering his time to the University for many years since graduating with a degree in English literature. "Roger Williams definitely contributed to my being able to open the doors of opportunity that appeared throughout my career," he says. "The genuine interest that the faculty took in the students impressed me very much."

The Bristol campus had just opened the year Paul was a freshman, so he has seen the University grow up, literally, before his eyes. "Every time I visit, there's something new going on," he says. "I encourage alumni who haven't seen the campus recently to make a point of visiting."

He has also watched the Alumni Association grow and develop into an important component of the University in the 10 years he has been a member of the Board. The directors meet on campus quarterly and work with alumni, students, parents and University administrators in planning events and supporting Roger Williams. Paul says he enjoys addressing the new alums at Commencement and welcoming them into the association.

The biggest alumni event of the year, Alumni Weekend, is set for June 6-8 (see page 20). The board is in the midst of planning the event, which features tours of campus and nearby attractions, sports events, good food and cheer, notes Paul. The annual Alumni Awards will be presented to recognize accomplished graduates.



Paul meets regularly with Alumni Relations Director Tom Walker (right) to plan Alumni Association business.

He'd like to double the attendance at this year's Alumni Weekend over last year's number. "We've seen a lot of new faces at our last few events, and I get the sense we're beginning to roll now," he says.

"There are a lot of alums out there, and we're starting to pick them up. I think that comes out of the pride of seeing the tremendous growth and success that this University has achieved. Roger Williams has become an internationally recognized institution. It makes me very proud." ♦

"We've seen a lot of new faces at our last few events, and I get the sense we're beginning to roll now."

ALUMNI PROFILE

Giving Something Back

From Fireman to Lawyer, David Szerlag '85 Asks Alumni to be Generous

by Richard Stewart

David Szerlag '85, National Chair of the RWU Annual Fund, wanted to be an attorney for as long as he could remember. He saw it as a way to help people. But realizing his dream would take a while. First he would work, he decided, taking a job as a paramedic in his hometown of Coventry, R.I., where he'd served as a volunteer firefighter since age 16.

Even while helping develop the Fire District's advanced life support program, he never gave up on the dream. Taking courses at a community college got him started. Marriage was in the cards, too. Norma would be the inspiration he needed to pull his law school plans to the front burner.

(continued on page 10)



David confers with Dean for Institutional Development Christel Ertel (right) regarding alumni participation in the RWU Annual Fund.

(continued from page 9)

A self-directed study program offered by the Roger Williams (then) Open Division appealed to him. It afforded flexibility in scheduling classes, which meant he could be a full-time student (albeit a non-traditional student) and still keep his job. He inquired about enrolling and spoke with the head of the program, John Stout, now dean of the University College for Continuing Education. "I remember being very impressed with Dean Stout," recalls David. "He showed me how I could arrange school around my work schedule. Later he became my faculty advisor. Next to my wife, he is the person most responsible for helping me reach the goals I set. He encouraged me to stick with the program every step of the way."

After graduating from Roger Williams with a degree in public administration, David was accepted at Suffolk Law School in Boston. Holding down a full-time job as a paralegal/law clerk and commuting to school three nights a week, he completed the four-year program early, graduating cum laude. Today he

is an independent trial attorney of counsel with the Providence law firm of Baluch, Gianfrancesco and Mathieu.

Dean Stout remembers: "David was a fine student, very determined to make it to law school and fulfill his dream. We are proud of him and his contributions to the University today." He notes that the Open Program is now in its 23rd year.

Since David volunteered to serve as National Chair of the Annual Fund last September, he has been reaching

"I was talking with a friend about the University one day and started realizing how important a role Roger Williams and the faculty have played in my life and my career. I decided I wanted to do something for the school in return."

out to alumni in an effort to spark the same strong feelings for RWU that were rekindled in him recently.

"I was talking with a friend about the University one day and started realizing how important a role Roger Williams and the faculty have played in my life and my career. I decided I wanted to do something for the school in return," he says. "The University is a dynamic institution worthy of our support."

David's goal is to increase the number of alumni who participate in the Annual Fund. Various levels of giving have been established, including the Blue Club, asking donations of \$25 or more from alumni who graduated in the '90s, and the Gold Club, asking donations of \$50 or more from alumni who graduated in '80s (see page 11).

Alumni can also contribute to RWU in other ways, he points out, by supporting alumni events and volunteering. "Anything that we alumni can do to invest in the University's future adds to its prestige and reputation," he observes. "And that is good for everybody, especially alumni."

David is encouraged by the increased participation he has seen this year. "We are thrilled that so many more alumni have been turning out at events and showing support for our efforts with the Annual Fund. "We're hoping to get a lot more people to participate, too," he says. "So, you fellow alums who haven't been involved with the University for a while, here's your invitation to join us."

He senses that some Open Program grads might not feel as connected to the University as students who lived on campus. "If they consider how much the University has helped them achieve their goals, I think they'll realize that

the time spent at Roger Williams was special. Hopefully, they will consider giving something back," he adds.

"The generosity and participation of our alumni in the Annual Fund not only provides financial support for the next generation of students, but it endorses the outstanding accomplishments made by the University," says David. "Alumni giving not only feels good, but it allows our alma mater to reach even higher goals." ♦

FOCUS ON DEVELOPMENT

The RWU Annual Fund



Impact through Participation: Alumni involvement enhances fund-raising efforts

An interview with Christel L. Ertel, Dean for Institutional Development

by Nancy Nicholson

Q Tell me, why is the Annual Fund so important to the University?

A The Annual Fund is vital to our ability to maintain academic excellence. It's important to realize that tuition alone doesn't cover the cost of a student's education at RWU. The University needs ongoing participation of all of its alumni, alumnae, parents and friends, as well as foundations and corporations, to maintain growth in excellence.

Q Could you give me an idea what my Annual Fund dollars support at RWU?

A The unrestricted gifts made to the Annual Fund each year support the University's yearly operating budget. Contributions help support scholarships and provide laboratory enhancements and additions to library collections. They also help fund curricular development including both academic and enrichment programs. As you can see, Annual Fund gifts go to the University's highest priorities and are critical to building for the future.

Q Some alums might say, "I can't give very much, so my gift doesn't matter." How would you reply to this?

A Every alum who makes a gift to the Annual Fund is promoting educational excellence at the University. As the reputation of RWU continues to grow, so does



the value of the degree or certificate held by each of our graduates. Therefore, each gift, whether major or modest, contributes to the greater good of the institution.

Q What role does alumni giving to the Annual Fund play in overall fund-raising efforts?

A When foundations, corporations or friends of RWU are asked to support the University, they look very closely at how our own constituents—primarily graduates—support our

institution. When making funding decisions, foundations and corporations favor universities with a high percentage of alumni participation. It is a measure of the institution's strength. There is no doubt about it, the participation of each and every alum counts.

In addition, alumni giving plays an important role in nationwide polls, such as the one conducted each year by *U.S. News & World Report*, which includes the percentage of alumni support as part of its ranking of colleges and universities.

Q What is the primary goal of the Annual Fund this year?

A Participation is the key word for the Annual Fund appeal at Roger Williams University this year. We are striving to increase the number of alums who give to the University. It is not the donation amount that is central, but rather the number of alumni who show support for their alma mater.

(continued on page 12)

Students Connect with Alumni and Parents in Annual Fund Phonathon

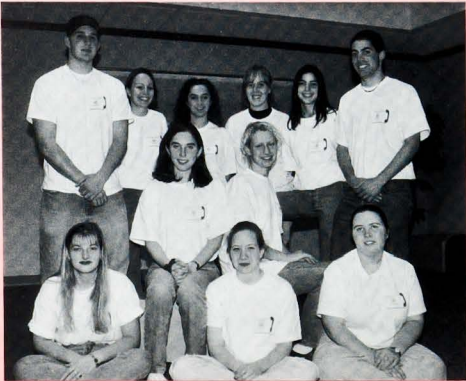
"I talked to so many people who really care about Roger Williams University and want to help as much as they can," commented one of nearly a dozen RWU undergraduates whose dedication and people skills helped make the Annual Fund phonathon such a success this year.

"I particularly enjoyed speaking with parents because they ask a lot of questions about me and about RWU. They seem committed to helping the students and the school as much as possible," remarked another student caller.

Throughout the fall semester, students placed more than 5,000 calls to RWU alums and parents asking for their support of the University through the Annual Fund. Alumni were called over a span of 27 nights, while parents were contacted for 10 evenings.

"With an increasing number of pledges from new donors, RWU graduates and parents are showing renewed interest in and a strong vote of confidence for the University," says VISTA Director Candace Maguire, who helped organize the phonathon. Alumni and parents who made fall pledges are encouraged to send in their gifts.

This spring, calls will be made to our most recent graduates. To the members of the Class of 1996, we look forward to hearing how you're doing and to welcome your involvement in the Annual Fund at the gift level comfortable for you. Remember, participation is the key!



(continued from page 11)

Q Are there any changes in the Annual Fund campaign this year that have promoted participation?

A Yes, we have established several new giving clubs to recognize our alumni donors. The Blue Club recognizes those who give at a level of \$25 or higher and who graduated during the 1990s. The Gold Club recognizes alumni donors who give at a level of \$50 or higher and who graduated in the 1980s. The Founders Club was added as well.

Also, our Annual Fund phonathon has been very successful, thanks to the outstanding efforts of RWU seniors Deborah Butkus and Cynthia Vocola, who've trained and advised an expert panel of students who call our alums and parents. We have expanded calling times, improved phonathon procedures, and streamlined internal processing. All of this has helped our Annual Fund results to date.

Q How is the Annual Fund doing at this point?

A I am very pleased to report that, as of January 31, 1997, the number of alumni donors has tripled compared to the same time last year. Annual Fund National Chair David Szerlag '85 and I are delighted to see how many alums and parents are supporting the University in this manner. We are also encouraged by the fact that so many others have made pledges of support. It is evident that our alums are very proud of their alma mater, and this, I believe, is motivating them to support the University.

Q What do you see ahead for the Roger Williams University Annual Fund?

A We are finding ways for more alumni volunteers to participate in the Annual Fund process, and we want to expand our Annual Fund program to allow meaningful participation for parents, who are among RWU's most enthusiastic supporters.

As we approach the 21st century, the most important thing Roger Williams University can do is prepare our students for the opportunities and challenges of the new century. It is vitally important that our Annual Fund keep pace in order to achieve our academic mission. ♦

Pictured at left are student callers, (shown left to right) third row: Kevin McWilliams, Ossining, N.Y.; Jess Stevens (Assistant Manager), Berkshire, N.Y.; Cindy Vocola (Manager), Harmony, Mass.; Deb Butkus (Manager), Whitman, Mass.; Maria Vincenzo (Assistant Manager), Bristol; Larry Spezzano, West Roxbury, Mass.; second row: Kira Berland, Weston, Mass.; Nikolett Anifantis, Norton, Mass.; first row: Laura Smalarz, Orlando, Fla.; Stacy Peterson, Milford, N.H.; and Jessica Snow, Plymouth, Mass.

Awards • Awards • Awards

Many graduates of Roger Williams University have noteworthy accomplishments in their professional and personal lives, service to the public welfare, or service to the University. The Alumni Association has created new Alumni Awards, which are presented at the expanded Alumni Weekend, June 6-8, 1997.

We want to hear from YOU! Perhaps you know a fellow alum who fits the criteria for one of these three awards. Or perhaps you do! Well, tell us about it!

Nominations for these awards should include a summary statement of pertinent reasons justifying your application/nominations of yourself or another alum.

All forms should be received by the Alumni Office by March 17, 1997.

The awards will be presented annually. Each award may be granted to one recipient annually.

Alumni Award recipients are selected by the Awards Committee, which consists of at least five members of the Association appointed initially by the president and organized so that new members are appointed each year. Committee members serve a maximum of five years. Membership of the

ALUMNI AWARDS APPLICATION/NOMINATION FORM

(Use additional page if space provided here is insufficient.)

For consideration to receive the 1997 Distinguished Alumnus/a of the year Award I submit,

Nominee's Name: _____ Class Year: _____

Statement of the reason for consideration: _____

For consideration to receive the 1997 Alumni Service Award I submit,

Nominee's Name: _____ Class Year: _____

Statement of the reason for consideration: _____

For consideration to receive the 1997 Young Alumni Achievement Award I submit,

Nominee's Name: _____ Class Year: _____

Statement of the reason for consideration: _____

Signature: _____ Date: _____

Nomination forms must be completely filled out. Nominations must be received in the Office of Alumni Relations by March 17, 1997. Please send this form and all supporting materials to: Roger Williams University, Alumni Office, One Old Ferry Road, Bristol, RI 02809-2921. Please fill out both sides of this form, fold it twice so the Business Reply Mail address faces out, tape or staple it, and mail it.



NO POSTAGE
NECESSARY
IF MAILED
IN THE
UNITED STATES



LY MAIL

3 BRISTOL, RI

RESSEE

UNIVERSITY

AD

8



alumnus must have graduated from the University with appropriate certificates or degrees in course.

The Young Alumni Achievement Award

This award recognizes a recent graduate for significant short-term achievements, who has made outstanding contributions to his or her chosen profession and has rendered distinguished service to the public welfare, thus honoring Roger Williams University and the Alumni Association. To qualify for this award, an alumnus must have received an initial degree from RWU within the last 10 years.

Awards Committee Chairpersons
Dennis Revers '72

Students Connect with Alumni and Parents in Annual Fund Phonathon

"I talked to so many people who really care about Roger Williams University and want to help as much as they can," commented one of nearly a dozen RWU undergraduates whose dedication and people skills helped make the Annual Fund phonathon such a success this year.

"I particularly enjoyed speaking with parents because they ask a lot of questions about me and about RWU. They seem committed to helping the students and the school as much as possible," remarked another student caller.

Throughout the fall semester, students placed more than 5,000 calls to RWU alums and parents asking for their support of the University through the Annual Fund. Alumni were called over a span of 27 nights, while parents were contacted for 10 evenings.

"With an increasing number of pledges from new donors, RWU graduates and parents are showing renewed interest in and a strong vote of confidence for the University," says VISTA Director Candace Maguire, who helped organize the phonathon. Alumni and parents who made fall pledges are encouraged to send in their gifts.

This spring, calls will be made to our most recent graduates. To the members of the Class of 1996, we look forward to hearing how you're doing and to welcome your involvement in the Annual Fund at the gift level comfortable for you. Remember, participation is the key!



(continued from page 11)

Q Are there any changes in the Annual Fund campaign this year that have promoted participation?

A Yes, we have established several new giving clubs to recognize our alumni donors. The Blue Club recognizes those who give at a level of \$25 or higher and who graduated during the 1990s. The Gold Club recognizes alumni donors who give at a level of \$50 or higher and who graduated in the 1980s. The Founders Club was added as well.

Also, our Annual Fund phonathon has been very successful, thanks to the outstanding efforts of RWU seniors Deborah Butkus and Cynthia Vocola, who've trained and advised an expert panel of students who call our alums and parents. We have expanded calling times, improved phonathon procedures, and streamlined internal processing. All of this has helped our Annual Fund results to date.

Thank you for supporting acad

meaningful participation for parents, who are among RWU's most enthusiastic supporters. As we approach the 21st century, the most important thing Roger Williams University can do is prepare our students for the opportunities and challenges of the new century. It is vitally important that our Annual Fund keep pace in order to achieve our academic mission. ♦

Pictured at left are student callers, (shown left to right) third row: Kevin McWilliams, Ossining, N.Y.; Jess Stevens (Assistant Manager), Berkshire, N.Y.; Cindy Vocola (Manager), Harmony, Mass.; Deb Butkus (Manager), Whitman, Mass.; Maria Vincenzo (Assistant Manager), Bristol; Larry Spezzano, West Roxbury, Mass.; second row: Kira Berland, Weston, Mass.; Nikoletta Anifantis, Norton, Mass.; first row: Laura Smalarz, Orlando, Fla.; Stacy Peterson, Milford, N.H.; and Jessica Snow, Plymouth, Mass.

Awards • Awards • Awards

Many graduates of Roger Williams University have noteworthy accomplishments in their professional and personal lives, service to the public welfare, or service to the University. The Alumni Association has created new Alumni Awards, which are presented at the expanded Alumni Weekend, June 6-8, 1997.

We want to hear from YOU! Perhaps you know a fellow alum who fits the criteria for one of these three awards. Or perhaps you do! Well, tell us about it!

Nominations for these awards should include a summary statement of pertinent reasons justifying your application/nominations of yourself or another alum.

All forms should be received by the Alumni Office by March 17, 1997.

The awards will be presented annually. Each award may be granted to one recipient annually.

Alumni Award recipients are selected by the Awards Committee, which consists of at least five members of the Association appointed initially by the president and organized so that new members are appointed each year. Committee members serve a maximum of five years. Membership of the Committee balances proper representation of the disciplines of the University. The Committee has the privilege of consultation with members of the Alumni Association and of the faculty, but are free to act independently. The action of the committee is final and binding upon the president of the Alumni Association.

The Distinguished Alumnus/a of the Year Award

This award recognizes a graduate for significant long-term success in personal and professional achievements, who has made outstanding contributions to his or her profession and has rendered distinguished service to the public welfare, thus honoring Roger Williams University and the Alumni Association. To qualify for this award, an alumnus must have graduated from the University with appropriate certificates or degrees in course.

The Alumni Service Award

This award recognizes a graduate for outstanding service to Roger Williams University. His or her voluntary contributions, either directly or through activity in the Alumni Association, shall have been over and beyond the normal call of duty. To qualify for this award, an alumnus must have graduated from the University with appropriate certificates or degrees in course.

The Young Alumni Achievement Award

This award recognizes a recent graduate for significant short-term achievements, who has made outstanding contributions to his or her chosen profession and has rendered distinguished service to the public welfare, thus honoring Roger Williams University and the Alumni Association. To qualify for this award, an alumnus must have received an initial degree from RWU within the last 10 years.

Awards Committee Chairperson
Dennis Revens '72

ALUMNI AWARDS APPLICATION/NOMINATION FORM

(Use additional page if space provided here is insufficient.)

For consideration to receive the 1997 Distinguished Alumnus/a of the year Award I submit,

Nominee's Name: _____ Class Year: _____

Statement of the reason for consideration: _____

For consideration to receive the 1997 Alumni Service Award I submit,

Nominee's Name: _____ Class Year: _____

Statement of the reason for consideration: _____

For consideration to receive the 1997 Young Alumni Achievement Award I submit,

Nominee's Name: _____ Class Year: _____

Statement of the reason for consideration: _____

Signature: _____ Date: _____

Nomination forms must be completely filled out. Nominations must be received in the Office of Alumni Relations by March 17, 1997. Please send this form and all supporting materials to: Roger Williams University, Alumni Office, One Old Ferry Road, Bristol, RI 02809-2921. Please fill out both sides of this form, fold it twice so the Business Reply Mail address faces out, tape or staple it, and mail it.

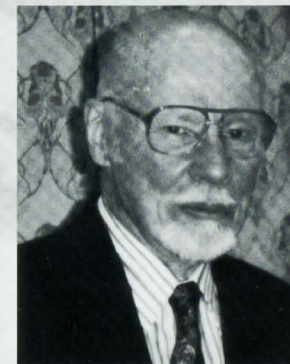
Dear Roger Williams University Graduate:

Why Alumni Give to RWU's Annual Fund

These three graduates express alumni pride by supporting the University in its efforts to achieve academic excellence.

Walter L. Whitman '50

Walter, of Manchester, Conn., is one of the first graduates from Roger Williams. He earned his degree in engineering over a nine-year period attending evening classes held in Providence at the YMCA. Now retired, he credits his RWU engineering degree with enabling him to advance to the level of division engineer at the Connecticut State Department of Transportation.



"It's simple. The University gave me the tools to advance in my profession. I give to the Annual Fund so that, in some small way, I can show my appreciation for what the school has done for me."

Judith A. Outerbridge '84

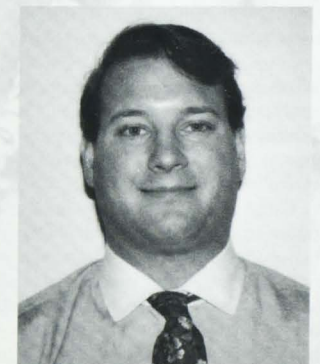
Judith, of Bristol, serves as office manager and paralegal at the Rhode Island law firm of Goldman and Biafore. She explains, "I had an exceptional educational experience at RWU. I started the paralegal program when it was one of the first in the country. It was so good that I stayed beyond the certificate program to earn a B.S. As an example of the quality of instruction, three of my professors were subsequently nominated or named to the R.I. Supreme Court!"



"I give because I believe in the basic principles of sharing and giving something in return. That's the way life should be. This is one way I can thank RWU for the educational benefit I received."

Ramsey R. Poston '90

Ramsey majored in political studies at RWU and now works at Winner, Wagner and Francis in Washington, D.C., a government relations firm that focuses on legislative and public referenda issues. While an undergraduate, he was inspired by the University's ambitious plans for the future.



"I am proud of the education I received, and excited to see the University's plans becoming reality. I support the Annual Fund because it's an opportunity to give something back, to help RWU achieve its potential as a first class University."

BUSINESS REPLY MAIL

FIRST CLASS MAIL PERMIT NO. 53

POSTAGE WILL BE PAID BY ADDRESSEE

THE ANNUAL FUND
ROGER WILLIAMS UNIVERSITY
ONE OLD FERRY ROAD
BRISTOL, RI 02809-9988

UNITED STATES



BUSINESS REPLY MAIL

FIRST-CLASS MAIL PERMIT NO. 53 BRISTOL RI

POSTAGE WILL BE PAID BY ADDRESSEE

ALUMNI OFFICE
ROGER WILLIAMS UNIVERSITY
ONE OLD FERRY RD
BRISTOL, RI 02809-9988



VISTA NEWS

Volunteers in Support of Admissions

Program Expands Volunteer Base and Impact

by Candace Maguire, Director, VISTA Program

It's often hard to top a great debut, but that didn't stop the VISTA Program. With some new faces on the team, VISTA members are alive with energy to follow up a successful first year with another season of exciting and memorable student recruitment work.

Starting off the recruitment cycle in September, VISTA members Douglas Bart '77, Torrie Corvo '92, Steve Klosen '92, Jennifer Longmire '92, John Longmire '92, Michael Turner '92, David McElvey '93, and Craig Rogers '93 attended a training session. Lynn Fawthrop, acting director of enrollment management, and Kelly Rivers, admissions counselor, spoke to the group about the mission of the RWU Admissions Office, offering them important tips on how to recruit students. After the session, the volunteers enjoyed brunch at President Santoro's home in Bristol.

Using their newly learned skills attained at the training session, Craig, Michael, and Torrie, in addition to Paula Bianchi '94 and Diane DeBenedetto '93 covered five college fairs this past fall, giving prospective students in their areas information about RWU from a graduate's perspective. Spring college fairs across the nation have already started and VISTA members are representing the University at many of them.

New volunteers joining the VISTA team this spring include Edward Travers '85, Lisa Travers '87, Nanette Oliveras '88, Arnold Horowitz '89, Torrie Corvo '92, and Marc Ullman '92.

It's always nice to see the volunteers' work paying off, and enjoyable to realize that VISTA members have made a difference in a prospective

student's college decision. Congratulatory calls to those students who've been accepted to the University are currently underway; VISTA volunteers

are also inviting these students to attend one of the Accepted Students Days in March and April. These days will be an excellent way for students to meet graduates from their region and to hear first-hand about their RWU experiences.

The alumni-student connection is a wonderful one, and will be the subject of my talk at the New England

Association of College Admissions Counselors meeting at Quinnipiac College in May. I also want to invite you to find out more about the VISTA Program by visiting the alumni page of the RWU web site on the internet (<http://www.rwu.edu>).

You may also contact me by phone at 1-800-458-7144, Ext. 3216, or by e-mail (cam@alpha.rwu.edu).

We encourage more alumni to volunteer for this expanding program. Speaking with alumni and receiving their guidance is important for prospective students. Through VISTA, students can learn more about how they will succeed, and have fun in the process, in RWU's challenging environment. Volunteers not only have a strong and direct impact on the University through recruitment work, they also maintain ties with their alma mater, remembering all that inspired them to success and all that gave them countless fond memories.

In the following profile, international business entrepreneur Elizabeth Munger '86 tells of her enjoyment staying involved with RWU through VISTA.



Trading with Mexico

From a Dusty Texas Border Crossing, Elizabeth Munger '86 Teaches the Ropes of Import-Export

by Richard Stewart

Little did Elizabeth Munger '86 know when she moved to the Texas border city of Laredo a year and a half ago that today she'd be a successful entrepreneur with her own company.

She found out *pronto* that she'd have to learn Spanish (95 percent of the city's 150,000 inhabitants are Hispanic). And regardless of her B.S. in business and M.B.A. in international business, she needed on-the-job experience relating to trade with Mexico, just across the Rio Grande.

Elizabeth graduated cum laude from Roger Williams 10 years earlier before earning her master's at the University of Rhode Island. She then worked in various marketing positions in Rhode Island firms until 1994, when she decided she needed a change of pace and scenery.

When a friend moved to Monterrey, Mexico's industrial capital, Elizabeth seized the opportunity, moved to Laredo 150 miles away and started working with a company that provides contract employees to U.S. Customs.

"I was trained to deal with the paperwork involved in the importation process and I learned how the whole custom system works," she explains. Soon Elizabeth realized how advantageous it would be for people who import and export goods to visit Laredo, the largest U.S. port of entry with Mexico.

She formed Frontier International Marketing Group and began offering seminars and workshops. Elizabeth describes her programs as practical and results-oriented.

"We teach people the things they need to know to be successful in trading with Mexico and Latin America,"



she says. Working with a network of import-export professionals, her company offers a variety of marketing services: research, strategic planning, product literature adaptation and documentation assistance.

She remembers her days at Roger Williams very fondly. Her father is RWU Chemistry Professor Jim Munger, and the two of them often lunched together on campus. The supportive atmosphere she experienced is something Elizabeth values to this day.

"The closeness between teachers and students and the willingness of everyone to make time for students are what make the University so special."

Elizabeth stays involved with RWU through the VISTA Program. As a VISTA volunteer, she is one of more than 35 alumni who promote the University and assist in the student recruitment effort.

"I go to local schools and college fairs as a representative of Roger Williams and distribute information and answer questions," Elizabeth says.

"I enjoy talking to students about the University—I'm a big fan as you can tell. I'm glad to help direct new students to RWU and make myself available to them after they've enrolled to offer support and advice." She encourages students to contact her directly by phone or e-mail.

"Roger Williams gave me so much, being a VISTA volunteer is a way for me to give something back to the University," she says.

Winter is the best time to visit south of the border, Elizabeth informs those of us facing the Rhode Island winter.

"Here in Laredo," she chuckles, "it's in the '80s." That's *muy bueno* in any language. ♦

VISTA Volunteer Elizabeth Munger '86
Frontier International Marketing Group
Phone (210) 712-3400 FAX (210) 712-3375
e-mail: frontier@netcorp.net

CHAPTER NEWS

Alumni and Parents Association

Alumni Spirit Continues to Grow

by Thomas M. Walker, Director, Alumni and Parent Relations

As we begin the new year, I'd like to express my and the entire Alumni Association's delight in the continued growth of our alumni spirit. We are encouraged by the participation of alumni at our many events held throughout the year. At last fall's events, there was always a wonderful sense of enjoyment among alums, who shared new good times while reminiscing about their student days. Bringing alumni together is an important goal of our Alumni Association.



Forty-one years ago, our institution held classes at the Providence YMCA as a branch of Northeastern University. That same year, we formed the Alumni Association to foster a continuing relationship with our graduates. Since then, we've grown into the dynamic Roger Williams University you know today, and boast an Alumni Association over 14,000 members strong.

With graduates living in all 50 states and around the world, keeping you all connected with RWU requires planning and support of the Alumni Board of Directors and various committees staffed by alumni volunteers. Working together, we represent all of you as well as the University through hosting alumni special programs and events.

Chapter events, held in selected areas around the country where alumni cannot easily return to campus, are increasing in popularity. These events are a great way for alumni to get together, have a good time, share old memories, and create new ones.

Last November, over 130 alumni and their guests attended the New

York/New Jersey Chapter event at the Rainbow Room in Rockefeller Plaza. We held similar gatherings in Hartford, Los Angeles, San Diego, San

Francisco, Washington D.C., Providence, and Bristol. We regularly plan gatherings at 15 chapter locations across the nation.

In 1997, we will continue to offer many alumni events. We urge you to take part in the Alumni Association at events and in any way you can.

Keep abreast of developments at the University, find out how fellow alums are

doing, and inform us of your professional successes and personal triumphs. This is your Alumni Association, and we are here to serve you.

The alumni page of the RWU web site (<http://www.rwu.edu>) gives you additional opportunities to stay connected. With updates of upcoming events, an on-line form for submitting "Class Notes," photographs of various alumni social gatherings, and much more, it is a great way for you far-away alums to keep in touch (see page 25).

A full schedule of alumni chapter events has been planned for this spring, the annual Alumni Weekend reunion is fast approaching, and of course, *The Bridge* will continue to feature interesting articles and updates about RWU and its alumni.

With so many exciting events coming up, now is a great time to be active in the Alumni Association. Don't miss out on another chance to share good times with old classmates. Call me today at 1-800-458-7144, Ext. 3465 to discuss how you can get involved. I look forward to hearing from you!

Faces in the Crowd

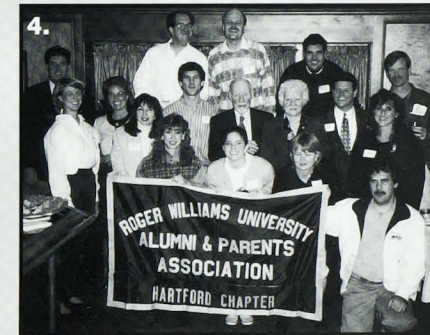
New York/New Jersey Chapter Friday, September 6

New York City's elegant and famed Rainbow Room at Rockefeller Plaza was the setting for more than 130 alumni and parents who attended a gala cocktail reception. President Santoro greeted guests and updated them on the new developments at RWU. Alumni and guests had a memorable evening as they socialized and enjoyed delectable hors d'oeuvres and cocktails. 1. Cori Sidman '92, Harold Schlacter (parent of freshman business management major Ean Schlacter), Christine Brown '92, and Tedi Schorr '92 take pleasure in a moment together. 2. Husband and wife James '82 and Lisa Kenny '83 reminisce fondly of their student years. 3. Bill Sullivan '84 and wife and Brenda Citrone '93 smile for the camera.



Hartford Chapter Friday, September 27

A fun-filled End-of-the-Summer Party, held at the Main and Hopewell Restaurant, was made more special because its location is owned by one of our own, Fran Sullivan '72. Twenty Connecticut alumni and their guests gathered for a perfect opportunity to catch up on old times and welcome new members. Special thanks go to Chapter President Robert Polman '79 for helping plan this great event. 4. Alumni, guests, and Dean for Institutional Development Christel Ertel (third from the left) pose for a group shot. 5. Walter Whitman '50 and guest Emily DeCampos (center) meet Glen Ellis '82 and his wife Kathy. Also in attendance were: Michael and Elaine Berling '87, Michael Clinton '85, Abigail Denny '90 and Chris Ford '93, Jamie and Michael Dipinto '79, Robert Holmes '89, Nannette Oliveras '88, Merri and Arnie Horowitz '89 and Linda and Bob Polman '79, Mary and John Victorick '80.



Bristol Alumni Brunch Sunday, September 29

The aroma of french toast, cooked-to-order omelets, sizzling sausages and other brunch items filled the air beneath a large white tent decorating the lawn of President Santoro's home in Bristol. The President and his wife Pauline hosted the lovely brunch, where more than 60 alumni and guests were treated to the delectable buffet (6.), as seen in the photograph. 7. Seated, clockwise from top center, are Shawn Driscoll, law student and Jennifer Samolyk '92 ('96 law); Lisa Needle and Chris Mordas '94, law student; and Allison Furman, law student.

Washington D.C. Chapter Thursday, October 24

Ending a busy day at the nation's capitol, a group of area alumni and parents gathered at the exclusive Willard Inter-Continental Hotel for an evening cocktail reception. Guests enjoyed the time after work to mingle with fellow alumni and hear news of RWU. 8. From left to right, are Robert Durell '93, Hamish House '93, Garth McDonough '93, Melissa Unger '91, Paul Williams '89, and Ilva and Antonio Pou (parents of junior marketing major Joel Pou). 9. Melissa, Garth, Robert, and Hamish share the changes in their lives since graduation.



San Francisco Chapter
Thursday, November 14

A spectacular view on the 53rd floor served as a background for over a dozen alumni and their guests at a cocktail reception held in the stately Carmel Room of the Bank of America World Headquarters Building.

10. President Santoro (pictured center here with **Sharon Buckley '88** and **Robert Becker '86**) met with alumni and guests to talk about their achievements since graduation and to highlight some of the recent changes taking place on campus. 11. From left to right, are Renee Walker, **Joanne Sherman '80**, **Deborah Geisser '84**, **Dave Bogumil**, **Scott MacAskill '86**, **Claudia Bogumil '88**, **Sharon Buckley '88**, **Robert Becker '86** and his wife **Mindy**, **Jon Miller '80**, Dean for Institutional Development **Christel Ertel**, and President Santoro.

Los Angeles Chapter

Friday, November 15

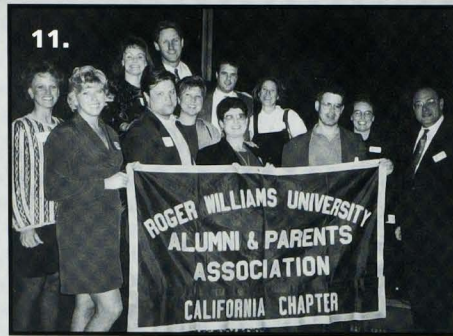
Movie stars and Hollywood legends have all stayed at the historic Beverly Hills Hotel, which was the scene for a dozen Los Angeles area alums who gathered for a stunning cocktail reception. President Santoro met with alumni and shared campus news.

12. Pictured at the reception are President Santoro, **Suzanne Pereira '89**, **Lawrence Federman '92**, **Meredith and Jeff Hirschberg '86**, **Nancy (Marola) '78** and **Matt Egan '78**, **Lisa Brause '88**, Dean for Institutional Development **Christel Ertel**, **Virginia Flynn (Morrison) '90**, and **Thomas Walker**, Director of Alumni and Parent Relations. 13. Seen reminiscing about their years at RWU are **Nancy**, **Suzanne**, and **Lawrence**.

San Diego Chapter

Saturday, November 16

Perfect sunny weather, swaying palms, and beautiful beaches grace the seaside town of La Jolla. More than a dozen San Diego alumni and guests joined President Santoro and other University representatives for a dinner and cocktail reception at George's at the Cove Restaurant. 14. **Paul Levine '90** attempts to get the attention of a fellow alum across the room while guest, **Tracy Bonet**, looks on. 15. Proud dad **Walter C.S. "Bud" Stahler '77** posed with his daughter **Katie**. 16. (seated) **Tracy**, **Marianne '73** and **Todd Urbonas**, **Amy Bergen** and **Phil Zerofski '92** and (standing) **Paul**, **Joe Johnson**, **Kathy McGraw '86**, "Bud" and **Katie**, and **Lee Juskalian '71** enjoy an expertly prepared dinner featuring California cuisine.



New York/New Jersey Chapter

Saturday, November 30

"Hoops on the Hudson" was a stimulating evening of dinner and exciting athletic competition for more than 60 New York and New Jersey Chapter alumni and parents. After enjoying a buffet at the Stevens Institute of Technology in Hoboken, N.J., alumni and guests strutted their school spirit as they cheered on our own Hawks basketball team as they played against SIT's Ducks. Alumni Relations Director **Thomas Walker** updated guests about RWU's plans for the future. Athletic Director **Bill Baird** discussed the athletic program and (17. & 18.) introduced the varsity basketball team to attendees prior to the game. 19. Shown clockwise from bottom left, are **Mike Alpert '91** and his wife **Donna**, **VISTA Volunteer Torrie Corvo '92**, and **Michael Turner '92** at the buffet.



Rhode Island Chapter

Wednesday, December 13

December was made merrier with seasonal spirit when more than 70 alumni and guests gathered for an elegant holiday party at the Providence Omni Biltmore Hotel in the Penthouse L'Apogee. Alumni enjoyed cocktails and a light buffet, while a festive selection of holiday songs presented by the RWU chorus spread holiday joy among the crowd. 20. From left to right, **Marc Rosenberg '70**, Director of Alumni Relations **Tom Walker**, Alumni Association President **Paul Petit '73**, and **Robert Bromley '82**. 21. **Jen Rodrigues '96** and her guest **David Landoch** look forward to freshly carved turkey sandwiches at the carving station, as **Norma** and **David Szerlag '85** (see page 9), are seen in the background.

22. President Santoro enjoyed the opportunity to travel to chapters across the nation to meet alumni and offer updates on the University's many achievements. ♦

UPCOMING EVENTS

Alumni and Parents Association

Attendance is at an all-time high!

Record numbers of alumni joined the merriment at our many delightful chapter events (see pages 16-19 for photos), where good times were had and fond memories were made by all. More opportunities for alumni nostalgia, amusement, and volunteering are coming at chapter events this spring. Watch your mail for more information or call the Alumni Office at 1-800-458-7144, Ext. 3005 or (401) 254-3005.

Save the date ...

- Atlanta Chapter
Friday, March 21, 1997
A reception at the elegant Ritz Carlton in Buckhead
- Florida Chapter
Saturday, March 22, 1997
A sunny Florida location TBA
- Springfield Chapter
Friday, April 4, 1997
A festive location TBA
- Maine Chapter
Thursday, April 10, 1997
Dinner in charming Kennebunk
- Chicago Chapter
Saturday, April 26, 1997
Dinner at the posh Ritz Carlton
- Boston Chapter
Friday, April 18, 1997
Reception and show at the intriguing Museum of Science Omni Theatre
- Philadelphia Chapter
Thursday, May 8, 1997
The sumptuous La Buca Restaurant



ST. PATRICK'S DAY REUNION

March 14, 1997
Newport, Rhode Island



This is our most popular, well-attended alumni gathering that you won't want to miss! And that's no blarney!



Celebrate like the Irish on Friday evening with other alumni at our St. Patrick's Day Kick-Off Reception at the popular Red Parrot Restaurant, 348 Thames Street. At this favorite gathering, alumni enjoy complimentary hors d'oeuvres, music, and refreshments, beginning at 8:00 p.m. Try your luck at a free raffle to win an RWU monogrammed Champion sweatshirt, golf shirt, or St. Patrick's Day t-shirt. Drawing at 10:00 p.m.

On Saturday alumni meet for the spectacular annual St. Patrick's Day Parade beginning at 11:00 a.m. For details or information on hotel accommodations, call the Alumni Office at 1-800-458-7144, Ext. 3005 or (401) 254-3005.

ALUMNI Weekend '97

Mark your calendars now for June 6 - 8, 1997!

Join your fellow alums for a fun-filled weekend packed with activities to recapture the exhilaration of your college years. Call your classmates and plan to meet on campus for delightful alumni events with plenty of free time to enjoy area tourist sights as well as reminisce with friends.

Classes of '72, '77, '82, '87, and '92 will meet for reunions.

June 6: The fun begins with registration Friday evening. A welcome reception and barbeque gives you a relaxing, informal chance to socialize with friends and former classmates.

June 7: Registration continues in the morning, and a hearty alumni breakfast starts your day. Take in a walking tour of campus and see the new Center for Environmental and Economic Development and the new residence halls at Bayside Courts, where overnight guests will be staying. You may also tour historic Newport with its mansions and beautiful beaches. The high point of the weekend is the ever-popular Alumni Dinner-Dance and Awards Presentation, held this year at Christie's, the oldest and most famous waterfront restaurant in Newport. Don't worry about finding a baby-sitter—a mini-kids camp is at your disposal Saturday night for children 6-12 years old.

June 8: A relaxing summer Sunday brings chartered sailing, sandy beaches, shopping at Newport's many boutiques, or catching up with former classmates to finish off a perfect weekend of fond memories. An early breakfast is available for guests who need a head start home.

Don't miss Alumni Weekend '97! Place your reservation today. You may even want to volunteer at this treasured annual event. Call the Alumni Office at 1-800-458-7144, Ext. 3005 or (401) 254-3005.

'70 Michael Brady of Charlestown, R.I., has graduated from the New England School of Law in Boston. He is employed as the Charlestown police chief. He has the distinction of being the only Charlestown police officer to have attained a law degree.

• **Marvin William Lax** of Warwick, R.I., has been named a member of the Million Dollar Round Table's 1996 Honor Roll. MDRT is an independent, international association of 19,000 leading life insurance producers, each of whom has met strict ethical and production requirements to qualify.

'72



'73 Mark Jay Malin of Providence, R.I., recently received his 10th certificate for perfect attendance. He has missed only one day in 11 years at Nathan Bishop Middle School, where he teaches.

• **Marianne (Fine) Urbanas** of San Diego, Calif., serves as president of the Camden Corp., a national marketing/consulting firm.

'74 Jacqueline L. Cohen of Providence, R.I., is an elementary educator at the Fox Point Elementary School. She directs the Creative Learning Studio for students in the fourth through 12th grade.

• **Steven J. Levitt** of Cranston, R.I., serves as a general manager of one of the country's largest manufacturers of reflectors for the lighting industry.

'75 John Fernandes of Bristol, R.I., created a five-foot-tall, man-eating plant for Our Lady of Fatima High School's presentation of "Little Shop of Horrors." He created four different versions of the plant to be used during the production.

• **Louis Gingerella** of North Stonington, Conn., teaches at RPI Hartford in the M.B.A. program.

• **Monica Egresits O'Neill** of Springfield, Pa., serves as an associate with Stolarski, Gillespie and Hendrak. She has been appointed as a Judge Pro Tem in the Philadelphia court system and was elected to a third term as a committeeperson in the Springfield Township.

'76 Carol F. Bedard of Lincoln, R.I., has been appointed executive nurse at the Eleanor Slater Hospital. She now assumes the top nursing position at the state-operated, 700-bed hospital.

• **Matthew R. Costello** of Carolina, R.I., was promoted to the rank of lieutenant on the Warwick Police Department. He graduated from the New England Institute of Law Enforcement Training at Babson College in Wellesley, Mass.

'77



• **Marcia Russell-Cintron** of Providence, R.I., has been appointed director of diversity initiatives for The Providence Journal Co. She manages diversity initiatives, provides consultation to operating management and the newsroom in support of diversity activities, supports community affairs, conducts diversity education and training, help coordinate the Minority in Media intern program and assists with outreach efforts to solicit minority candidates for employment.

• **Joann K. White** of Damariscotta, Maine, is a nurse anesthetist with Miles Memorial Hospital.

'79 David E. Wilk of Stamford, Conn., has been appointed manager of William Pitt Real Estate's Norwalk office.

'81 Dianne Crowell of Bristol, R.I., performed in "Later Life" by A.R. Gurney with the Barn Summer Playhouse at the RWU Performing Arts Center.

CLASS NOTES

• **Jacqueline M. Smith** of Boston, Mass., has joined Spaulding and Slye, the integrated real estate services company with offices in Boston and Washington, D.C., as a senior property manager.

• **Carrie Winter** of New London, Conn., gave a presentation at a national conference in San Francisco. Her program, "The Business of Bereavement in 1995," offers comprehensive workshops for managers and employees dealing with issues of grief and loss in the workplace. Her program has been purchased by the U. S. House of Representatives.

'82



• **Steven Ricciardi** of Severna Park, Md., is employed with the U.S. Secret Service, Presidential Protection Division.

• **Kenneth L. Wilson** of Bermuda, is an assistant manager of customer services for Cable and Wireless PLC.

'83 Vickie Bailey of Bronx, N.Y., works for the New York City Department of Transportation.

(continued on page 22)

When financial aid officers are familiar with the concerns students and parents have about financing an education, students can be more comfortable during the financial aid process. It is especially helpful when staff members know first-hand what it's like to be a college student in the '90s.

In the RWU Student Financial Aid and Financial Planning Office, three staff members are recent alums, and as such, they truly understand what's important to the many students who walk into their offices each day.

Tracey DaCosta '92 (B.S. accounting; left), **Shannon Miles '93** (B.S. marine biology; right), and **Bethany Reber '96** (B.A. English; center) were all student-workers in the office during their college years, and each was hired full-time after graduating.

Tracey first served as a counselor for a year before being promoted to assistant director of financial aid in 1994. Last summer she was promoted to assistant director of enrollment management, working both in financial aid and admissions.

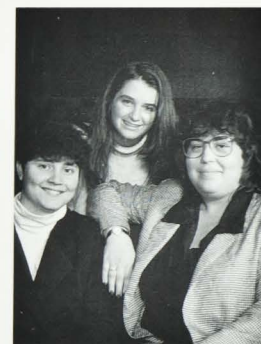
Shannon joined the financial aid team during fall 1993. As a counselor, her primary responsibilities include coordinating the Work-Study program, state grants, and working with transfer students.

"I like the feeling of being able to help the students, especially since I know what they are going through from my years as a student here," Shannon said.

"It's beneficial to see things from a student's point of view," comments Bethany, the newest member of the staff, who was hired last fall as a financial aid assistant. She currently works with the Perkins Loan program.

The trio value the close attention they received as students through small classes and individualized attention, and they feel that their strong RWU connection helps them to succeed in their jobs.

"At the end of a day, you really feel that you've accomplished something good," remarked Tracey. — LP



Alumni Focus

■ **Donald Lord** of Enfield, Conn., is a systems engineer. He and his wife Kim adopted Erin Kathleen, born April 10, 1996.

■ **Mark Saccoccio** of Warwick, R.I., has been appointed chair of the Electronic Technology Task Force of the National Council of Architectural Registration Boards.

■ **James (Jay) Walker** of North Chelmsford, Mass., is the founder of AliGator Software, makers of The Baby Book for Windows. Jay has been married for eight years to his wife Holly and has a two-year-old son Alexander James.

■ **John Walker** of Jersey City, N.J., guest starred as Detective McCadden on "Homicide" for three weeks and co-starred in HBO's movie "Under a Killing Moon," as well as appearing on national and international commercials. He received his M.F.A. in theater and is teaching American Theater in an Oxford University extension program.

■ **'84 Douglas M. Cyr, Ph.D.**, of Homewood, Ala., is a professor of cell biology in the Medical School at the University of Alabama-Birmingham. He is on the admissions committee for the Cell and Molecular Biology graduate program.

■ **'85 Diane E. DeRuosi** of West Warwick, R.I., serves as the town's new tax collector.

■ **Edward Fox** of Collingswood, N.J., serves as a professional planner for the firm of Remington and Vernick, Engineers of Haddonfield, N.J.

■ **Randall Herko** of Binghamton, N.Y., was promoted to network and CAD manager, and continues to perform as senior architect in charge of design and production of projects with the firm of Bearsch Compeau Knudson, P.C., Engineers and Architects.

■ **Karen Jefferson** of Laurel, Md., works as an integration analyst at St. Agnes HealthCare in Baltimore, one of the nation's top 100 hospitals.

Alumni Focus

People always laugh at Mike "Sweendog" Sweeney '94 (B.F.A. creative writing), but he doesn't mind. In fact, laughter inspires him most. When a crowd chuckles at him, he has triumphed.

As a stand-up comedian, Mike has doled out the jokes on many Boston-area stages. He is now beginning to enjoy significant success. "1996 was a banner year for me. My comedy career really took-off," explained the Illinois native.

Last June, his punch lines hit the funny bone at an audition for The Comedy Connection, one of Boston's premier comedy venues.

"I was on stage for only six minutes and had my best set ever. I was one of the 12 comedians out of 120 invited back to perform." Mike is now a regular, sharing the stage with many nationally known comics.

While at RWU pursuing an interdisciplinary major in architecture and creative writing, Mike served as the comedy chair for the Campus Entertainment Network. His work brought such comedians as Jon Stewart to campus. "I also took a comedy course in Providence, but my real comedy education came from actually being on stage, where I learned from some of my worst performances," he recalled.

By day Mike works as a desktop publications associate for Marine Systems Corp. of Boston. He produces operations and maintenance manuals for mechanical and electrical systems aboard Navy and Coast Guard vessels.

Achieving success at a day job he loves is important to Mike, but it's the stand-up career he enjoys most. He looks forward to appearing at more clubs in New England and the Midwest.

"Several new comedy venues have opened and thrived this year; it's a great time to do comedy," he added. Laughter may indeed be best medicine. Mike Sweeney definitely fills that prescription. — LP



■ **Paul K. Williams** of Washington, D.C., gave up his position in the spring of 1996 as legacy program manager for the HQAF in the Pentagon to start his own house-history and historic preservation business called Kelsey and Associates. He is also the grants administrator for the D.C. Preservation League.

■ **'86 Reginald A. Centracchio** of Scituate, R.I., serves as an adjutant general of Rhode Island and commanding general with the Rhode Island National Guard, and director of the Rhode Island Emergency Management Agency. He received an Honorary Doctorate of Military Science at Constantinian University.

■ **Dan Von Schaumburg** of Long Valley, N.J., is a vice president of underwriting and a company officer at Central Jersey Mortgage. He lives in

Long Valley with his wife Tonni and two daughters Alyssa, 6, and Victoria, 3.

'87



■ **Keith Johnson** of Providence, R.I., performed "Let's Talk Trash" at the Mark Twain Library in Connecticut. He presents more than 450 shows a year in schools, libraries, museums and at festivals.

■ **Trisha (Brown) Yenchick** of Royersford, Pa., is a production coordinator with CCI Communications.

■ **'88 Suzanne Costello** of East Providence, R.I., performed with the East Providence Community Chorus on the Capitol steps in

Washington, D.C. She has been a member of the group since 1993, singing in the soprano section.

■ **Alyssa (Hafner) Seclen** of New Milford, N.J., has been an accountant at Benjamin Moore and Co. for five years.

■ **'89 Michael Ringler** of Brooklyn, N.Y., performed as a corpse in the off-, off-, way off-Broadway Vineyard Theater production of "Antigone in New York."

■ **Luis Rodrigues** of Santa Clara, Calif., is an applications engineer with Array Microsystems Inc., which designs a specialized digital video encode/decode chip set for the computer industry.

■ **Steven J. Theriault** of Pawtucket, R.I., graduated from Anna Maria College with an M.A. in criminal justice.

■ **'90 Mahesh Goyal** of South Dartmouth, Mass., has been named an associate of Thompson Consultants, Inc., promoted to manager of the Electrical Department.

■ **'91 F. Michael Ayles** of Guilford, Conn., is a registered architect with The Antinozzi Associates Architects, P.C., in Stratford. He has also been appointed to serve on the National AIA Intern/Associate Committee for 1997.

■ **Ernest D. Bailey** of Bradford, R.I., has been promoted to sergeant in the Westerly Police Department.

■ **Cliff Drawbridge** of Seattle, Wash., is a yacht designer at Delta Marine, a company building custom motor yachts up to 150 feet.

■ **Andrew Goldberg** of Longmeadow, Mass., serves as vice president of Lewis Gold Label Foods.

■ **Andrew Hartstone** of Seattle, Wash., is a financial advisor.

■ **Kerryanne Kelly** of Norwood, Mass., was promoted to a marketing supervisor at Kessler Financial in Boston. She graduated magna cum laude from Emerson College in May '96 with a master's degree in public relations and advertising.

■ **Joann (Blanchette) Libby** of Coventry, R.I., is employed with Metropolitan Property & Casualty.

■ **John Marchei** of Centerbrook, Conn., is a fourth-grade teacher at Essex Elementary School. He has been teaching for the past three years.

■ **Tom Perkins** of Mansfield, Mass., has joined the law firm of Peabody and Brown in the MIS department to perform help-desk support and training.

'92



■ **Shauna Damboise** of Portland, Maine, serves as an operations assistant for Sebago, Inc., a shoe manufacturer in Gorham.

■ **John Feeks** of Block Island, R.I., is the lead singer in the band Electric Craw Reunion. The band will tour Europe this summer after playing concerts

this spring at the Hartford Civic Center and the Fleet Center in Boston.

■ **James Libby** of Coventry, R.I., is a registered architect with Stubbins Associates.

■ **Lisa Mainville** of Longmeadow, Mass., works for Merrill Lynch-Broker Services.

■ **Charles Jeffers Moore** of Portsmouth, R.I., presented "Treatment of Historic Collections: A Conservator's View" at the Newport Art Museum. He is one of five Fellows in a program at the Smithsonian Institution's Conservation Analytical Laboratory, which will lead to a master's degree in conservation.

■ **Andre J. St. Louis**, Navy Chief Warrant Officer, is deployed aboard the guided missile cruiser USS Philippine Sea. The mission is to support the NATO-peace implementation forces operating in the Mediterranean and Adriatic seas.

■ **'93 Remy Ash** of New York, N.Y., is a benefit and compensation consultant.

Karl Daubman '95 (B.Arch.) was recently honored as the sole winner of a global architectural competition. He was the top choice from among hundreds of young architects throughout the world who submitted entries to the highly prestigious Renzo Piano Building Workshop Competition.

Calling his first place finish a "great opportunity," Karl is quick to give credit to his RWU education in preparing him for this significant achievement.



Paris and, most recently, Kansai Airport in Japan.

"Karl's achievement is a clear indication that our School of Architecture is gaining worldwide recognition for educating young men and women who possess the comprehensive, in-depth skills and expertise necessary to realize their full career potential," says Dean Raj Saksena, FAIA. "We wish Karl all the best." — MP

Alumni Focus

"My education was very diverse, from liberal arts to (architectural) design, history and technology. It enabled me to be well-rounded in terms of my profession and ready to take on challenges."

Recently employed by the Boston, Mass., firm of Amsler, Woodhouse and MacLean, Karl left in September traveling to Italy to gain select professional experience working over a six-month period with Renzo Piano. One of the world's leading and most influential architects, Renzo Piano designed the Pompidou Center in

Stacy Bernstein of River Edge, N.J., is a concierge with the Theater Service Americana.

■ **Sean Burke** of Amesbury, Mass., is an intern architect.

■ **Michael T. Mannello**, Navy Seaman Recruit, of Waterbury, Conn., has completed U.S. Navy basic training at Recruit Training Command, Great Lakes, Ill.

■ **Pam Nagy** of New York, N.Y., is employed at Nederlander Organization, a company that produces Broadway shows, movies, and other productions.

■ **Kristin Paternostro** of Holbrook, N.Y., serves as a senior graphic designer for International Patters Inc.

■ **Michael Simone** of Holbrook, N.Y., works as a financial advisor for Parkway Mortgage Bank.

■ **Andrew Teresi** of Hallandale, Fla., is an EEO specialist with the U.S. Department of Labor.

■ **Terri Lynn Welch** of Franklin, Tenn., is an associate writer and creative department assistant with FISL-Madison Financial in their in-house advertising/creative department. She serves as assistant editor who writes and edits the employee newsletter, and produces television and radio spots for banks nationwide. She is also responsible for the audiovisual department including slide and video presentations.

■ **Peter Vogel** of New York, N.Y., is an equity research analyst.

■ **'94 Andrew Grace** of Cambridge, Mass., is attending graduate school at MIT and is enrolled in the Masters in City Planning program with a concentration in urban design.

■ **Mina La Pegna** of Cos Cob, Conn., received a Master of Science from Columbia University School of Social Work in Manhattan, N.Y.

■ **Charles Shaw** of River Edge, N.J., works as a media planner at Grey Direct Advertising in New York.

■ **David Young** of Metuchen, N.J., serves as a research chemist with Merck pharmaceuticals.

■ **'95 Julie Collins** of Providence, R.I., was promoted to assistant account executive in the Public Relations

Department of Duffy and Shanley.

■ **Ann Gibson** of West Haven, Conn., works for an architectural firm.

■ **'96 Lauren Alterman** of Trumbull, Conn., is an account representative at O'Halloran Advertising Inc.

■ **Ernest D. Bailey** of Bradford, R.I., has been promoted to sergeant in the Westerly Police Department.

■ **Sara Brown** of Parsippany, N.J., is an administrative assistant to the senior vice president of consumer products at M. Booth and Associates.

■ **Jennifer Drain**, architecture graduate, won the 1996 Robert Bradford Newman Student Award for Merit in Architectural Acoustics, for her final thesis project design of the Priscilla Beach Performing Arts Center in Plymouth, Mass. The award included a Bronze Medal, a Certificate of Merit, several books on acoustics, and a scholarship of several hundred dollars. The annual award was instituted in 1985 in memory of the late senior vice president of the world famous acoustic consulting firm of Bolt, Beranek, and Newman, Inc. Jennifer is the first RWU student to win the award.

■ **Barry M. Kevin**, Navy Petty Officer 1st Class, of Monterey, Calif., reported for duty at Fleet Numerical Meteorology and Oceanography Center.

■ **Luke Sweeney** of Acton, Mass., is the matching gifts coordinator at Babson College.

■ **Kim Testa** of Flower Mound, Texas, has been appointed an industry analyst at an international information technology services company in Dallas.

Marriages

■ **'70 Clement R. Marrese** to Lori J. Huntley
■ **Richard G. Nassaney** to Melissa S. Danusis

■ **'73 Marianne Fine** to Todd Urbonas

■ **'81 Pleasant Harwood Bagby Jr.** to Ashley LeAnne Rawlings
■ **Peter Robert Teto** to Kathleen Gabrielle Murphy

(continued from page 23)

'82 Michael Patrick McKenna to Linda Marie Rumpik

'83 Paula M. Cloud to John C. Bowser **■** Guido Picarazzi Jr. to Tracey Lynn Ivanovich

'84 Philip S. Carrozza II to Tricia S. Cardillo **■** Michael Harrison to Gretchen Alice Napp

'85 Sherri Lynn Brown to James Donald Chapman

'86 Steven Roger Barrette to Lise Suzanne Poulin

'87 Cynthia K. Andrews to Robert P. Elder **■** Williams J. Barclay to Deborah A. Smith

'89 Jane Derba to John N. Viti Jr. **■** Michelle Marie DuBouque to Jonathan J. Berube **■** John Robert Scott to Sherry Ann Vecchione **■** Jerry Thadeus Stankiewicz to Kathleen Marie Kincade **■** Debra E. Stein to David F. Campbell Jr.

'90 Bradley Hieber to Tamara Naylor **■** Craig Edward Pearson to Lisa Ann Taylor **■** Louis Scarpelli to Alison North **■** Jessica Taplin to James Fecteau **■** Lawrence B. Zevon to Jennifer A. Weygand

'91 Phillip W. Bakker to Nancy E. Castle **■** Jonathan Paul Carnes to

Kathleen Marie Martin **■** Keith Eric Durgin to Lorraine Ross **■** Andrew Philip Goldberg to Lisa Beth Mainville **■** Robert J. LaRoche Jr. to Karen F. Moran **■** Sharon Jane Orser to Brian Howard Jackson

'92 Mary-Lynn P. D'Amico to Henry Balassone Jr. **■** Robert Haryasz to Lori Daigneault **■** August Joseph Kreuzkamp III to Kristen Lorraine Zilling **■** Jennifer L. Logan to Stephen A. Miller **■** Lisa Beth Mainville to Andrew Philip Goldberg **■** Patrick William Murphy Jr. to Lynley Searle Chandler **■** Michelle K. Pare to Andrew E. Burke

'93 Wendy J. Goodwin to Obadiah C. Kelley **■** Kiersten L. Hoffman to John B. Marquart **■** Mark LePage to Annmarie McCarthy **■** Heidi L. Petrucci to Mark E. Spaight **■** Deborah J. Ramos to Jeffrey R. Ash **■** Kristen Joy Sutcliffe to Ronald Zanders Jr. **■** Craig P. Torres to Stephanie A. Bordes

'94 Daniel D. Fitzsimmons to Cherie L. Gingras **■** Todd E. Mezzanotte to Laura Ann Fisher **■** Robert Roach to Andrea May

'95 Dorene L. Boucher to Steven J. Mineau **■** Michael A. Gawel to Toni M. Tarateta **■** James A. Hart to Melinda S. Day **■** Gregory Kovacic Curry to Justine Amelia Miller **■** Jodi Lynn Nason to Frank R. Vento Jr.

'96 John W. Chamberlain Jr. to Karen Maxwell **■** Colleen B. Charette to Sean J. Giannini **■** Joshua P. Davis to Kirsten J. Messer **■** Kyle Ferreira to Danielle R. Lamothe **■** Marco P. Uriati to Jennifer L. Whitehead **■** Khalif Ashton Williams to Dawn Marie Kittner

Births

'82 Drew Nicholas, July 9, 1996, to Steven Ricciardi and his wife Carolyn.

'83 Erin Kathleen, April 10, 1996, to Donald Lord and his wife Kim.

'84 Lauren Elise, April 11, 1996, to Michael J. Morano and his wife Noreen and children Dennis, 5, and Michael, 3. **■** Averil Ryan, March 18, 1996, to Barbara Sorge and her husband Jim Brugger.

'85 Connor Joseph, May 23, 1996, to Joseph Cairolì and his wife Lisa (Bellomo) Cairolì.

'86 Laura Nicole, June 21, 1996, to Vincent Newcomb and his wife Alice. **■** Daniel Paul, April 7, 1996, to Elizabeth (Willis) Harrison and her husband Thomas and children Matthew, 4, and sister Lauren, 3. **■** Carly Alana, July 11, 1996, to Susan (Kessler) Shapiro, and her husband Mark and children Sara, 4, and Madison, 2.

'87 Ian Mitchell, September 10, 1996, to Danielle T.

Budding and her husband Arnold. **■** Brandes McCann, April 11, 1996, to Trisha (Brown) Yenichick and her husband Thomas.

'89 Mason Joshua, June 20, 1996, to Ellen (Lackman) Raboy and her husband Jamie.

'91 Michael Cameron, August 30, 1996, to F. Michael Ayres and his wife Stephanie and daughter Rylie, 2.

'93 Paige Chandler, March 10, 1996, to Kristin Paternostro and her husband Michael Simone.

'96 Alexandria Roette, October 29, 1996, to Neal Barringer Personeus and his wife Donna.

Obituaries

'93 Jeffrey Gibson died July 8, 1996. He had been employed by the New York Department of Environmental Protection, and was an active rugby player and sports enthusiast. He is survived by his wife, Erica (Proto) Gibson '93 of Suffern.

'95 Kathy Rainone died April 15, 1996. She had been employed by Edwards and Angell in Providence, R.I., before retiring last year. She is survived by her husband Nick, mother, two sons Brett and Scott, daughter Wendy, two sisters and a grandson.

ALUMNI ASSOCIATION ENTERS CYBERSPACE: WEB PAGE KEEPS GRADUATES

C O N N E C T E D

by Leah Pabst

You've been promoted at work and you want to share the news with your fellow alums, but with your busy schedule, you simply don't have the time to send the information to the Alumni Association ...

Or maybe you want to find out what events your Alumni Association is planning for the next few months, but you keep forgetting to call ...

Maybe you want to see recaps of some fun alumni activities that you missed, but you misplaced your last issue of *The Bridge* ...

Or maybe you want to visit the campus to see all the changes that have taken place since your student years, but you can't make the trip right now ...

What do you do when time or distance prohibits you from staying in touch with your alma mater?

VISIT US ON THE WEB!

No matter where you live or when you want access to the Alumni Association, if you have access to the internet, you can visit our page on RWU's web site (<http://www.rwu.edu>) and stay connected to campus. Since going on-line last May 1996, the alumni page has been accessed about 100 times each month.

"Our page has been designed to make it easier for those of you who can access the internet to stay current with various alumni events and other important information. Since more and more alumni are located around the country and the world, the internet bridges geographic boundaries and connects you with your alma mater, instantaneously," said Director of Alumni Relations Thomas M. Walker.

"We are especially happy with the number of 'Class Notes' responses we've received through the web, and we hope that more of you will continue to use this option," Tom commented.

"There is more planned for the web site in the future, so all alums are encouraged to visit it frequently."

With the assistance of the University's Information Technology staff, the Alumni Association web page is updated often and is frequently expanded to include new information.

Here are some of the new items on the Alumni Web Page ...



Q & A

This question-and-answer section gives you the information you need to know about various aspects of the Association.



E V E N T S

Find out about upcoming activities you won't want to miss; highlights from great times had at recent alumni events; and a special section previewing Alumni Weekend '97 festivities.



P H O T O S

Photographs of past events mentioned above show you how much fun alumni are having at chapters across the nation.



M E M B E R S

A listing of Alumni Board members and chapter presidents shows who represents you with the Association. You may even want to volunteer for a vacant position.



V I S T A

Updates list volunteers and show you how alumni stay connected with RWU by working with Admissions (see page 14).



A W A R D S

Read the descriptions and criteria for the Alumni Awards to be presented at Alumni Weekend '97. Then use the on-line form and cast your vote for deserving graduates today.



C L A S S N O T E S

This convenient on-line form makes it easy for you to submit news for publication in *The Bridge*. Let everyone know what you've been up to; we'd love to hear from you.

AND MUCH MORE!



what's
new
with
you?

We've told you all the Roger Williams University news. Now, we'd like to know about you. Take a moment to fill out this form and return it to: Laura Kutsaftis, Department of Alumni Relations, Roger Williams University, One Old Ferry Road, Bristol, RI 02809-2921. Or send it by e-mail (alumni@alpha.rwu.edu), or through the Alumni Page of the RWU web site (<http://www.rwu.edu>).

Name _____ Year of Graduation 19 ____ Degree: ____ Major: ____

Address _____

Is this a new address? ☐ yes ☐ no

Home Phone _____ Work Phone _____

Present job title and company _____

Here's my news for "Class Notes" _____

ROGER WILLIAMS UNIVERSITY
One Old Ferry Road
Bristol, Rhode Island 02809-2921
(401) 253-1040 or 1-800-458-7144 toll-free

Nonprofit Org.
U.S. Postage
PAID
Providence, R.I.
Permit No. 795



Ms. Linda J. Cambra
Mr. Joseph Cambra
P O Box 285
Bristol, RI 02809

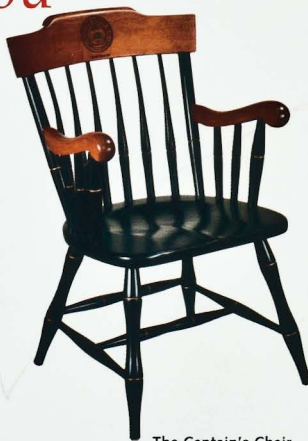
Roger Williams University is establishing a new chair... and it's up to you to name it!

Solid Hardrock Maple Chairs and Rockers laser engraved with the Roger Williams University Seal and personalized with your name and graduating year.

The chairs feature steam bent crowns, a comfortable scooped seat, hand-painted gold beading and a beautiful lacquer finish.

The Heritage Table Lamp is made of solid hardrock maple with solid brass accents.

To order your item, fill out the form below. The items are guaranteed against all manufacturer's defects. In addition, if for any reason you are not totally satisfied with your item, please return it within 30 days for replacement or refund.



The Captain's Chair
18 1/4"D x 22"W x 34 1/2"H
28 lbs.



The Boston Rocker
27"D x 23"W x 40 1/2"H
27 lbs.



The Heritage Lamp
27"High
7 lbs.

- ☐ RWU Engraved Captain's Chair at \$275.00 each*
☐ RWU Engraved Boston Rocker at \$275.00 each*
☐ RWU Engraved Heritage Lamp at \$169.00 each*
☐ Optional personalization at \$25.00 per item (see below)
(engraved with your name and class year under engraved school seal)

Subtotal Item Charge

Sales Tax (Rhode Island delivery only - add 7% of subtotal)

Shipping & Handling - \$19.00 per item (continental U.S.A.)

(For Texas, Rocky Mountain States and West Coast add an additional \$10.00 per item)

Optional Rush Service add \$25.00 per item plus shipping

TOTAL

*When ordering more than one item please attach additional personalizations and ship-to addresses.

Personalization (For example - John Q. Student '96 - Maximum 30 spaces)

PLEASE ALLOW 4-6 WEEKS FOR DELIVERY. ☐ Item will not arrive when I need it. Please send gift certificate.

REMIT ALL ORDERS AND INQUIRIES TO: Alumni Office, Roger Williams University, One Old Ferry Road, Bristol, RI 02809-2921 • 1-800-458-7144, ext. 3005 • (401) 254-3005 • Fax (401) 254-3599

Please call during our regular business hours of 8:30 a.m. - 4:30 p.m. E.S.T. Mon.-Fri.

Method of Payment

(Check one) ☐ VISA ☐ Amex ☐ MasterCard ☐ Check (Make payable to Roger Williams University)

Credit Card Number

Signature

Exp. Date

ORDERED BY:

Name

Address (No PO Boxes)

City

State

Zip

Daytime Phone

SHIP TO: (if different from Ordered By)

Name

Address (No PO Boxes)

City

State

Zip

Daytime Phone