

Roger Williams University

DOCS@RWU

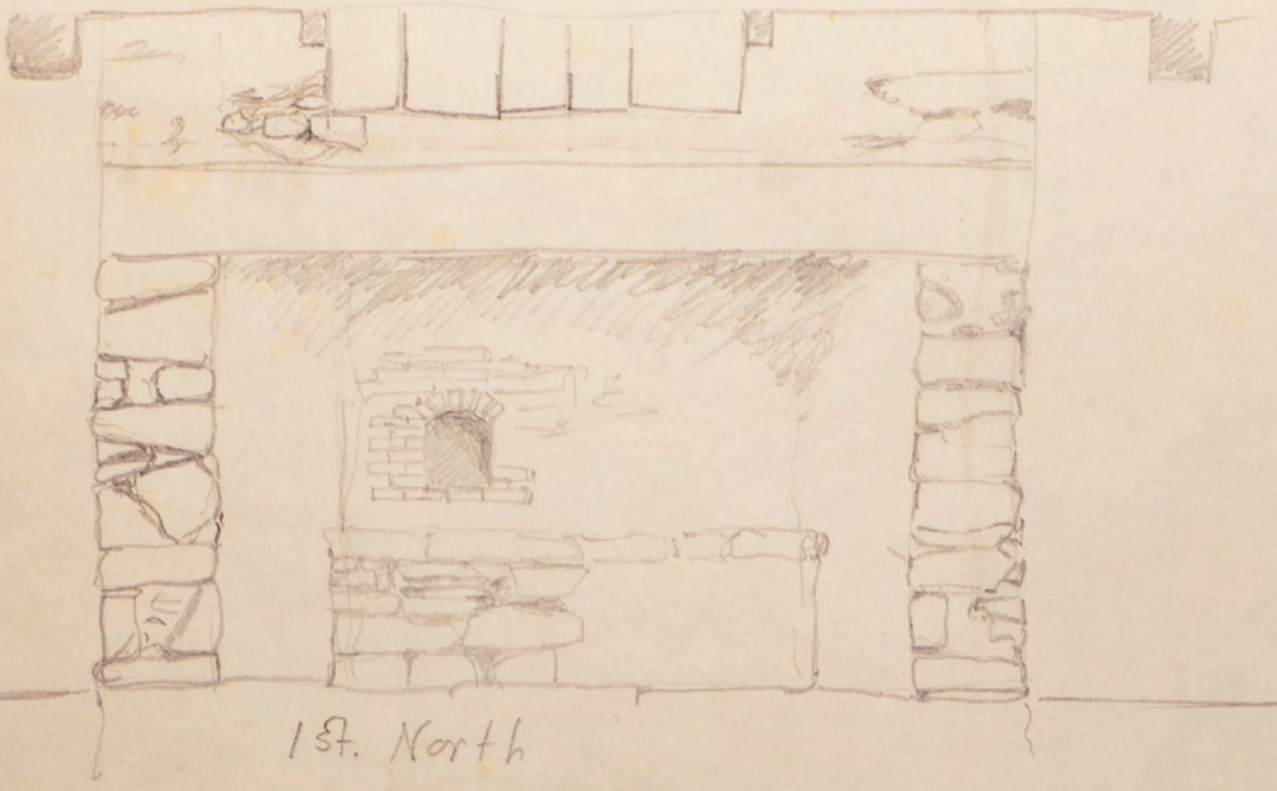
Documentation

Beriah Brown House: Baker's Sketchbook

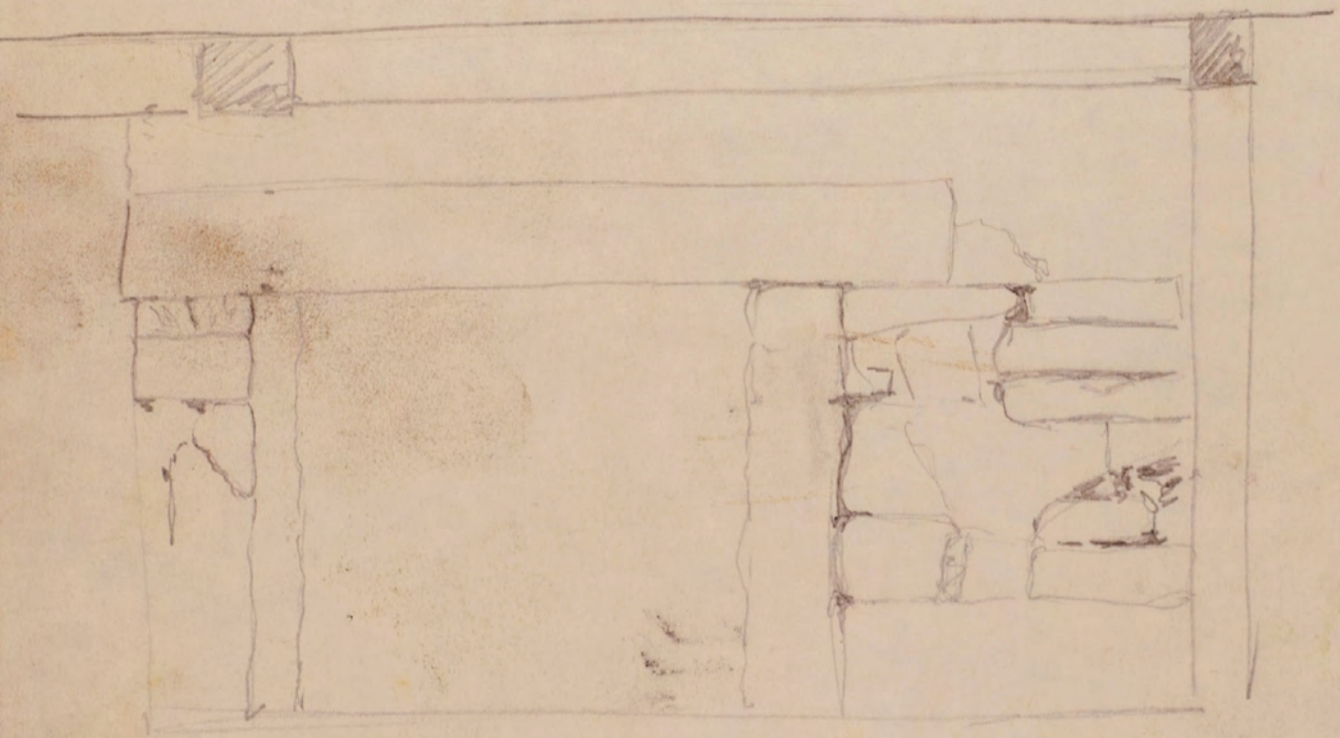
Follow this and additional works at: https://docs.rwu.edu/baker_documentation



Part of the [Historic Preservation and Conservation Commons](#)



1st. North

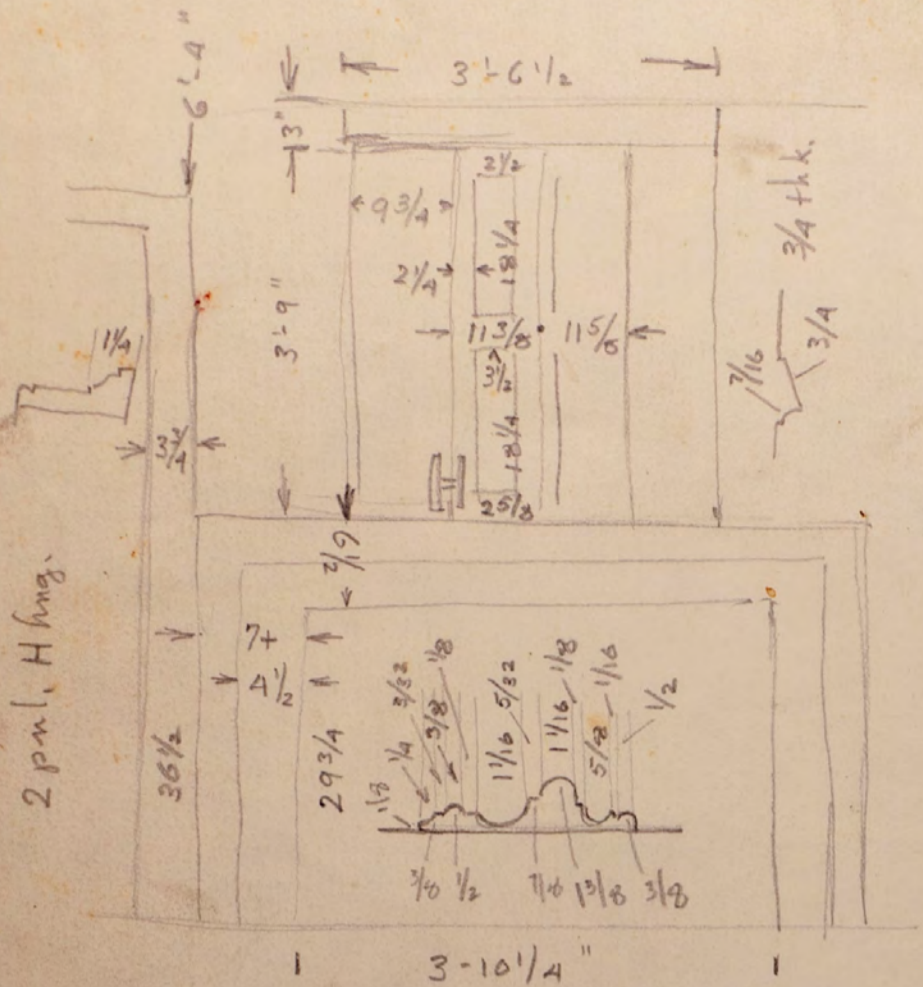


1st S.E.

B. Brown

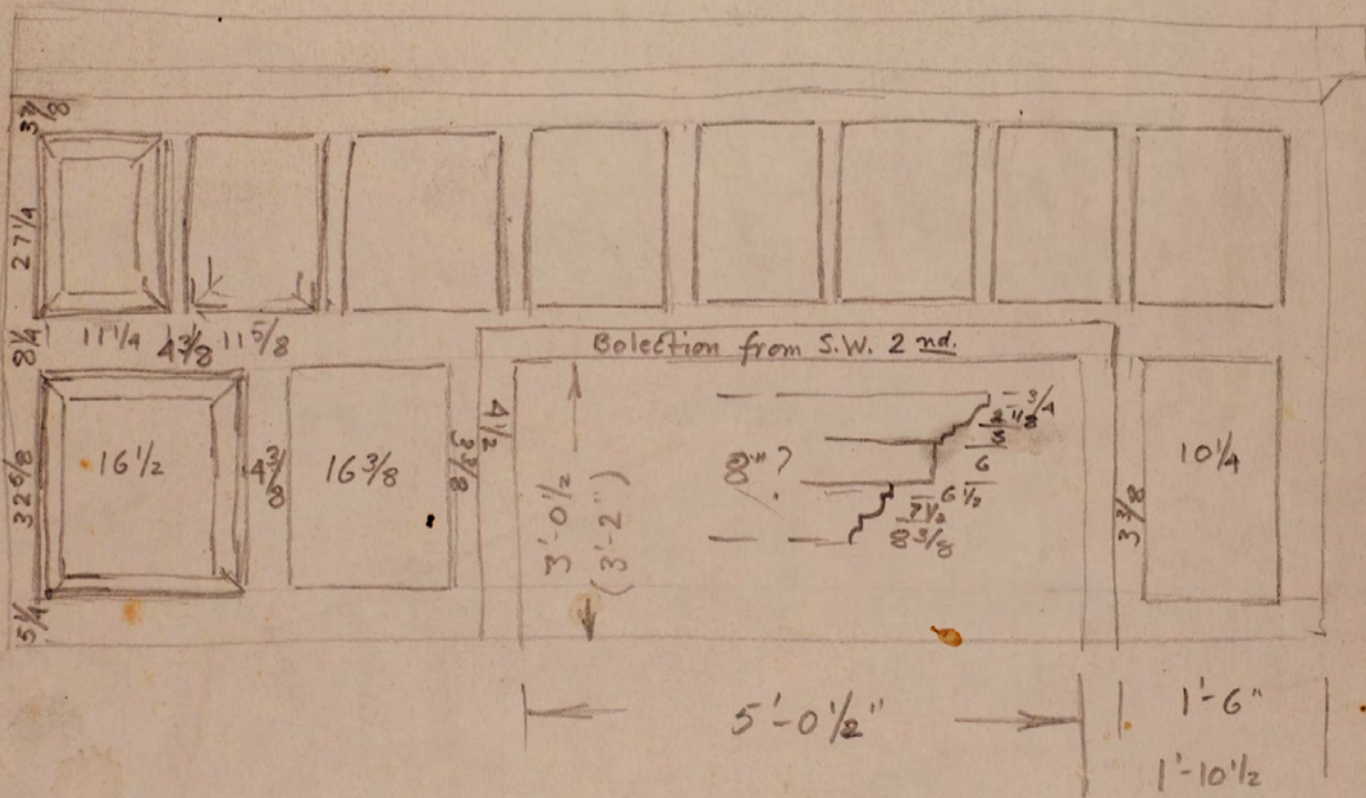
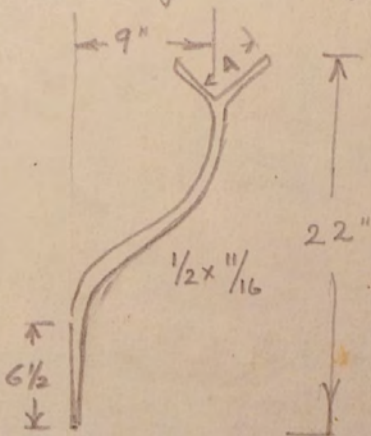
- String thru W. end.
- measure " E. " } 2nd
- measure " N.E. corn. " }
- W. mid girt N. side

- measure back wall } 2nd
- " mid. " }
- measure from dbl. post. to ch. wl. 2nd



1 3-10 1/4"
2nd. S.W. Mantle wall

Check front hall frame



Collection from S.W. 2nd.

3-8 weather vane

N 2nd 4-5 1/4 x 1-8 1/2
front

S.E. 157

Check dimon. of stone fireplace

2-5

2-2 1/2

flue 10x11 lintle, flat

2'-6" dp.

4'-6" h

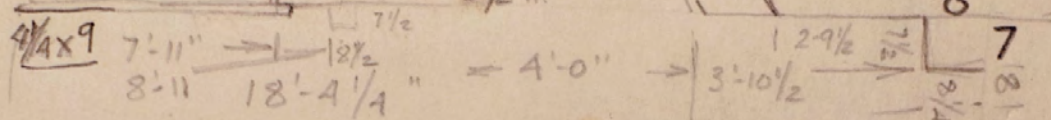
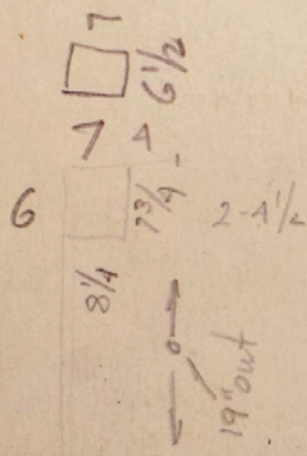
5'-8"

1'-6 1/2 dp.

2'-6 1/2 h.

Stone work

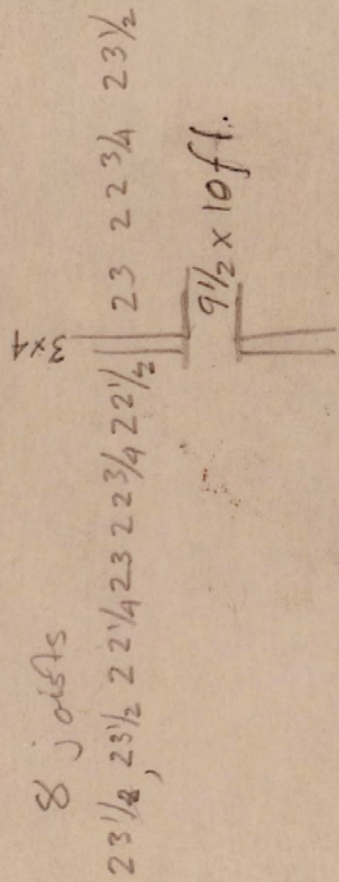
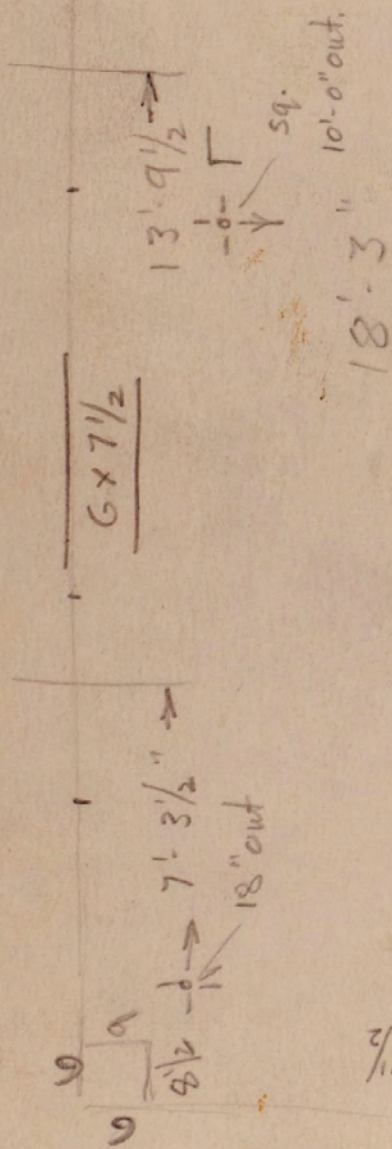
Masonry wall



Hearth 2-9 out
7-8 ± across.

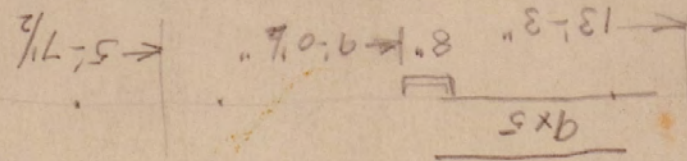
4-1

front

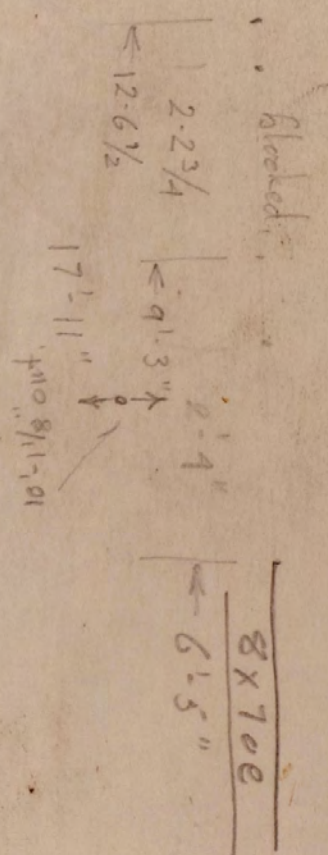


8 joists

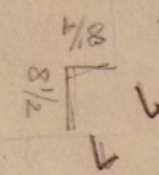
18'-3 1/4



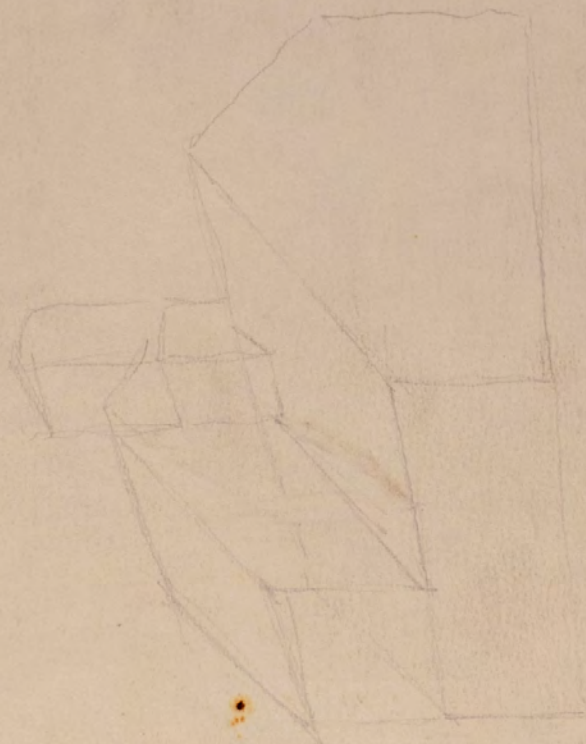
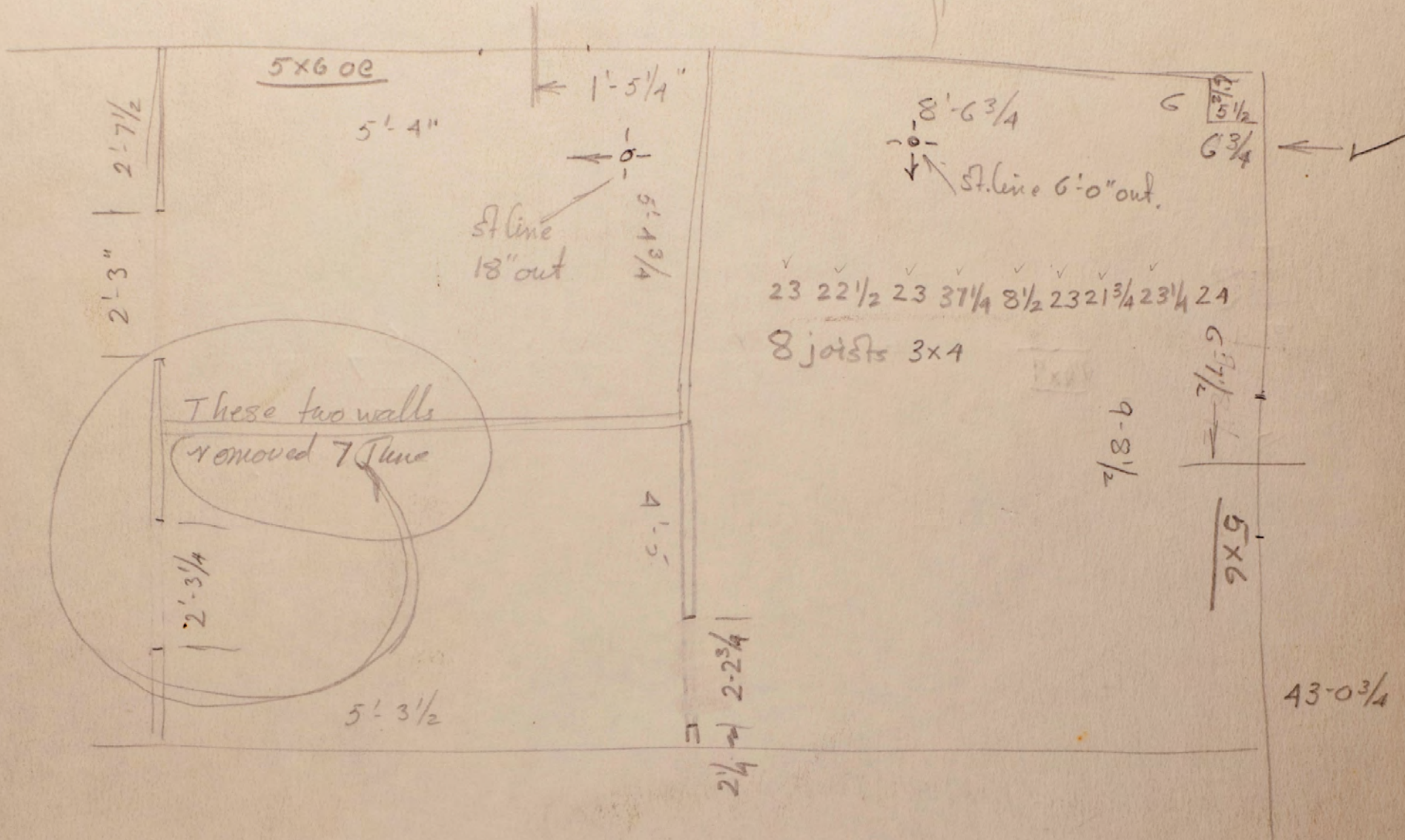
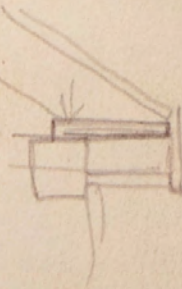
9x5



Blocked



N.E. Corner 2nd



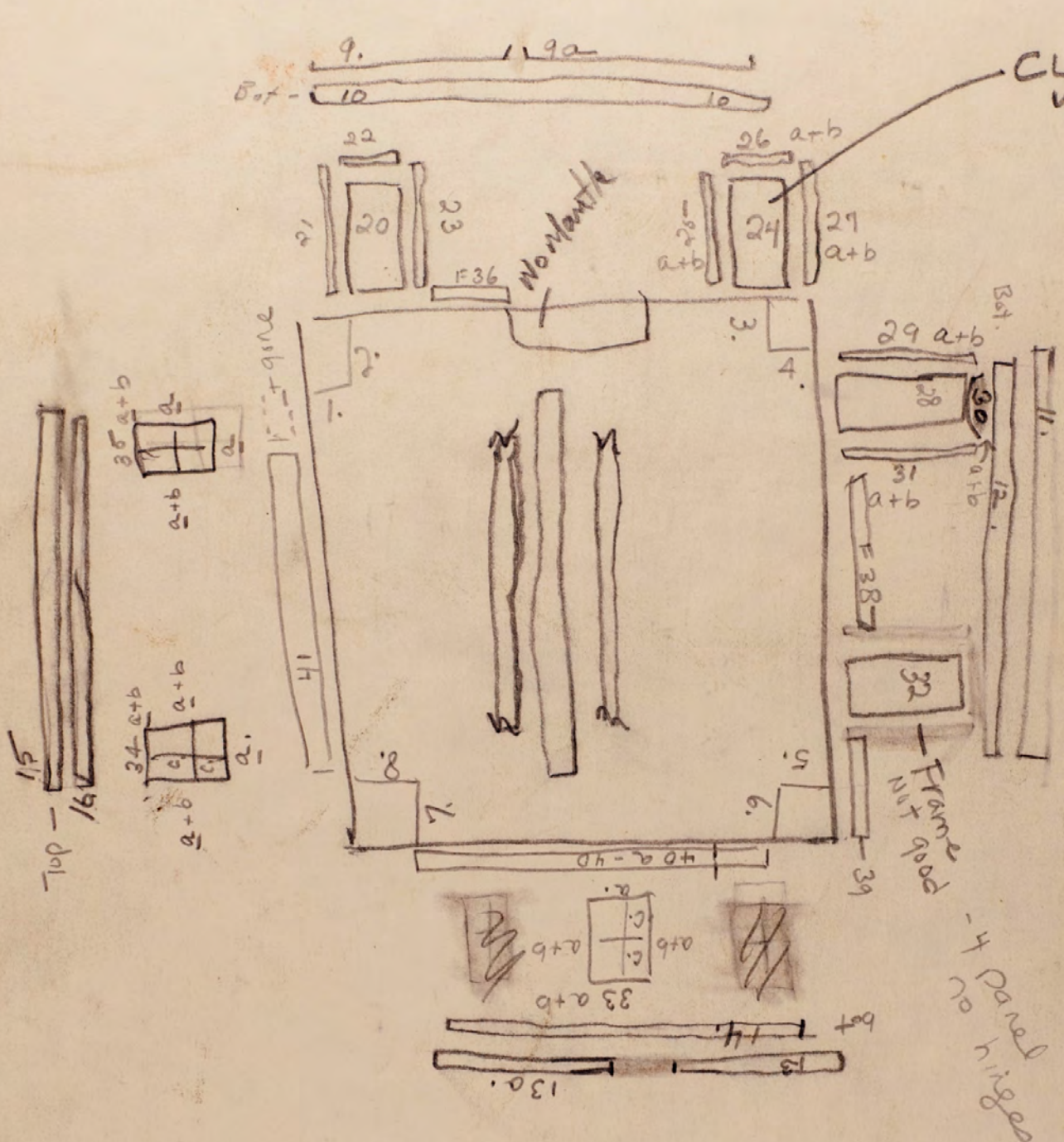
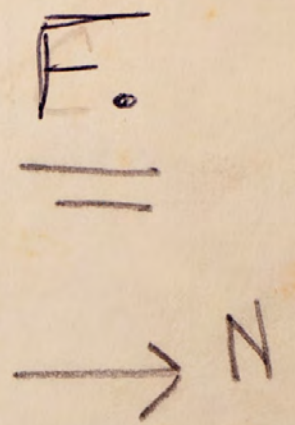
33 1/2
8-6 3/4
42-6 3/4

Doors - # equals frame
 letter next
 a. - jam - or molding
 b. - closet side

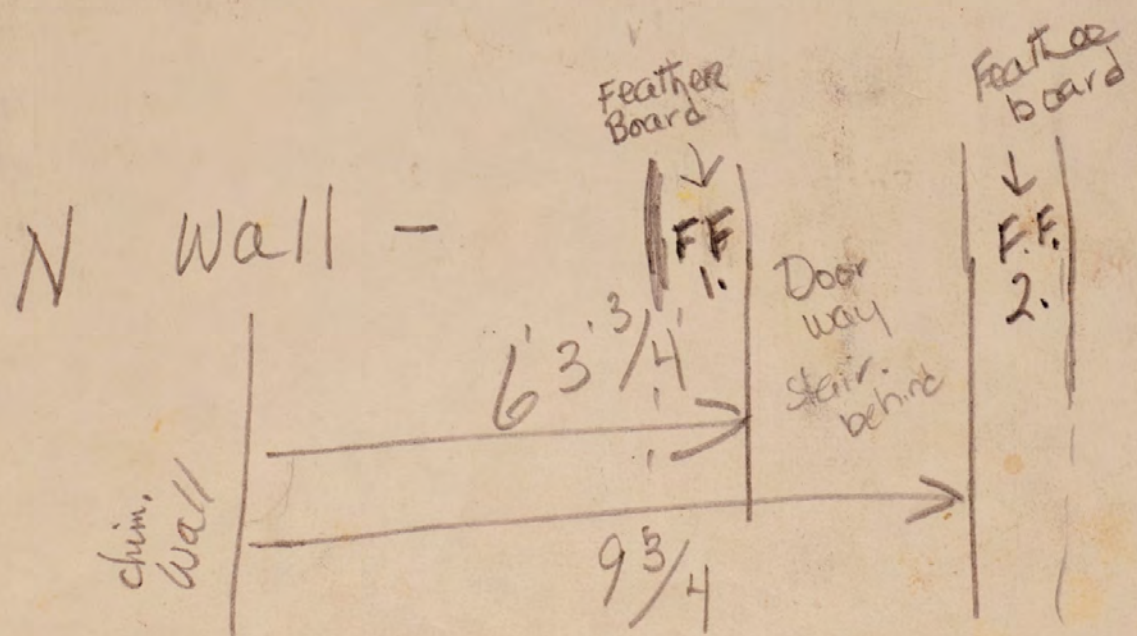
B. Brown

UPSTAIRS S.E.

Windows - (a) = Frame
 b. = window stick
 c = sash
 were no letter = no wood.



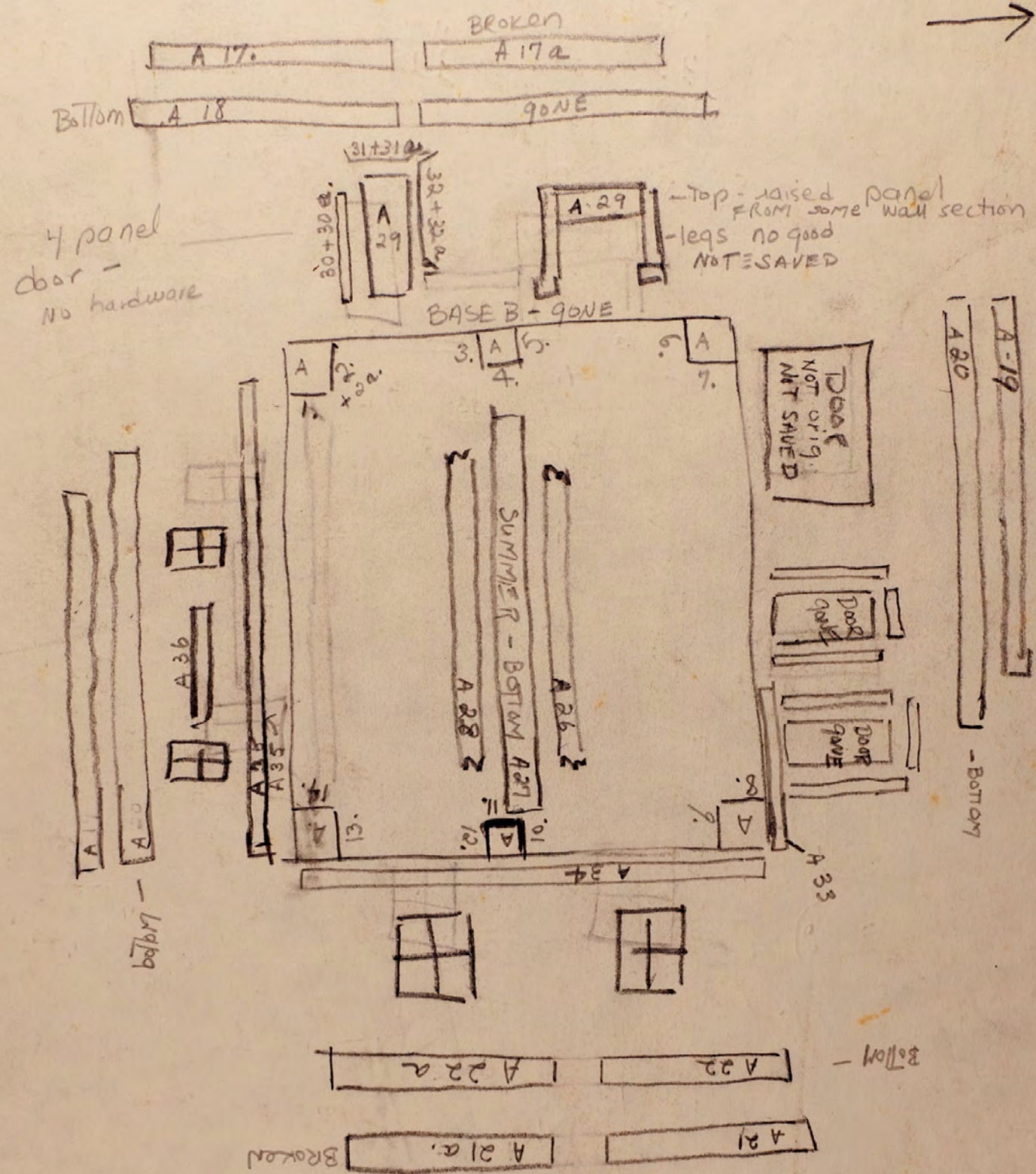
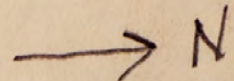
CLOSET - 2 panel ²H+L
 WITH SHELVES - hinges
 shelves #
 F I - III



Flooring
 F 1 - 13
 starting north wall
 East end.

1st Floor - S.E. / A.

WINDOW FRAMES NOT SAVED
 WINDOW SASH - NOT NUMBERED - 2016 cen, 12 over 12



Flooring

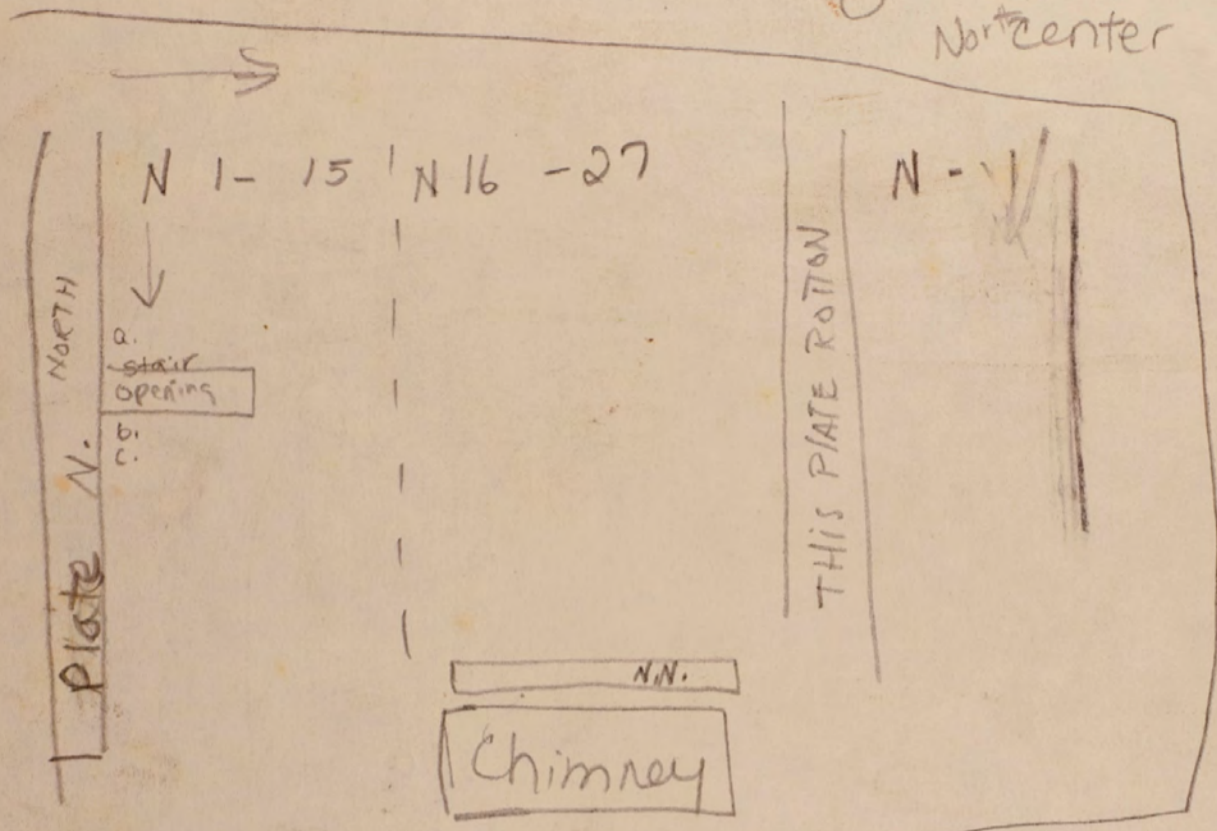
A 1-18

Start - N. East corner

ATTIC FLOORING

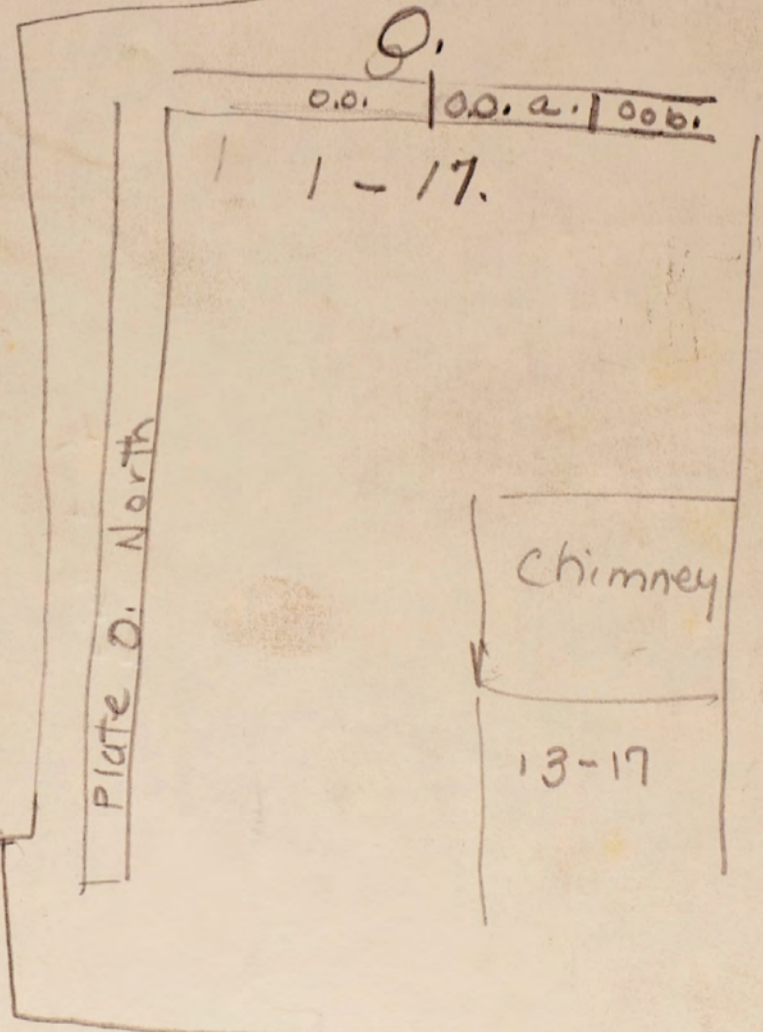
Board length
east to west runs - E.-W
Numbers run N to S.
N East end from chimney
O - section in front of chimney
North center of attic - N

Joint cover boards N 1-7

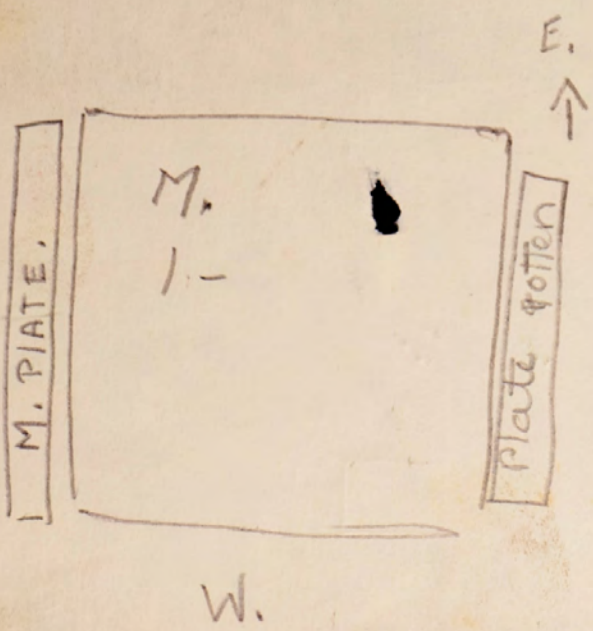


- N 1. a. b. c.
 2 a.
 3 a.
 4 a.
 5 a.
 6 a.
 7 a.
 8 a.
 9 a.
 10 a.
 11. a. b.
 12 a.
 13 a.
 14 a.
 15 a.

- N 16. a.
 17. a.
 18. a.
 19. a.
 20. a.
 21. a.
 22. a.
 23. a.
 24. a.
 25. a.
 26. a.
 27. a. is broken



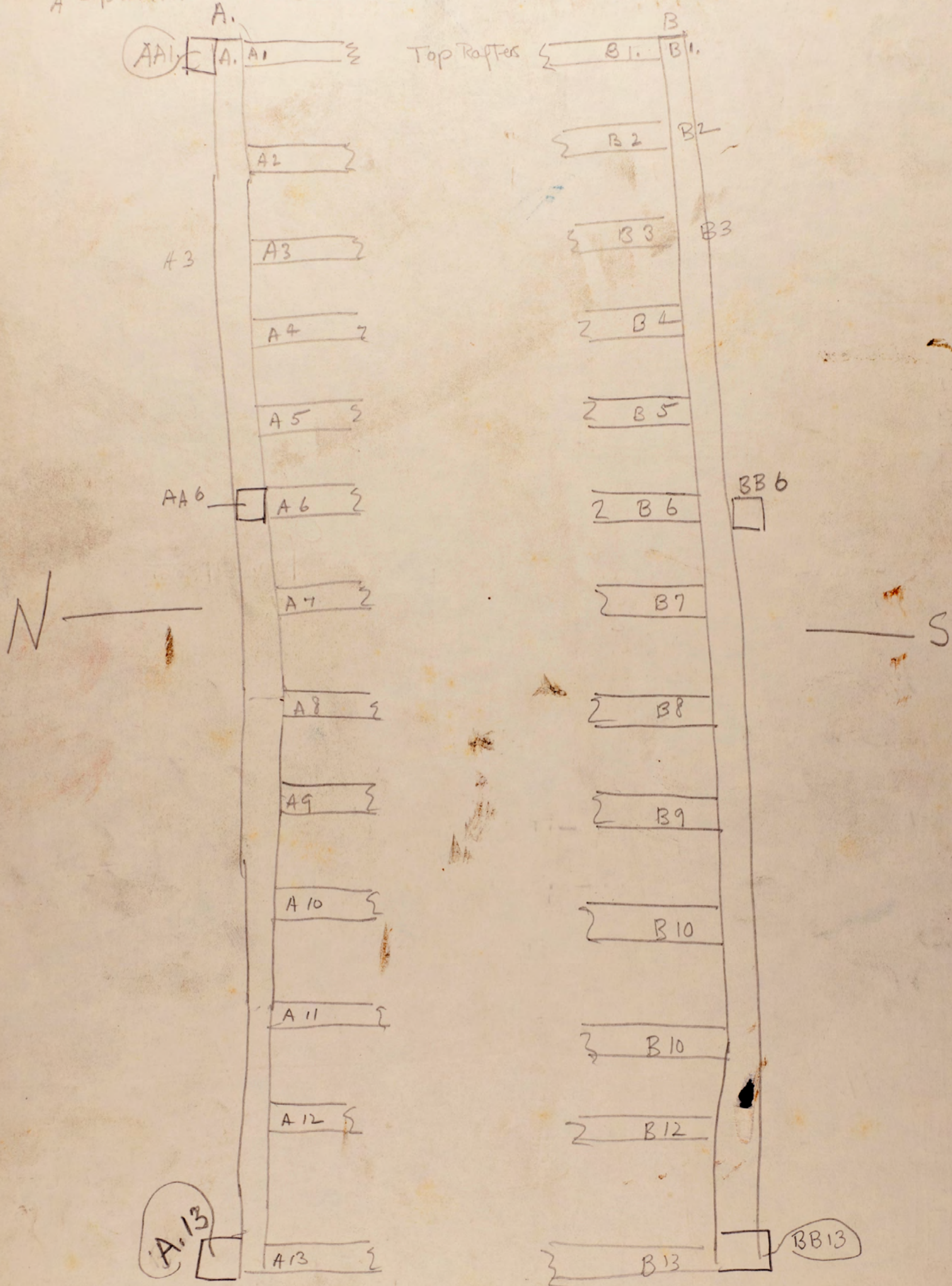
- O 1. abc
 2.
 3.
 4. a.
 5. a.
 6.
 7.
 8.
 9.
 10.
 11.
 12 a.
 13.
 14.
 15.
 16.
 17.



- | | | | |
|--------|-----------|----------|--------|
| a. b. | | | |
| 1. a. | 11. a. b. | 20. a | 29. a. |
| 2. | 12. a. b. | 21. a. | 30 a. |
| 3. a. | 13. | 22. a. | 31 a. |
| 4. a. | 14. | 23. | |
| 5. | 15. | 24. | |
| 6. | 16. | 25. | |
| 7. | 17. | 26. | |
| 8. | 18. | 27. a | |
| 9. | 19. | 28. a. b | |
| 10. a. | | | |

North side - is A.
A - purlin . Numbers - collars

South side B. Brown



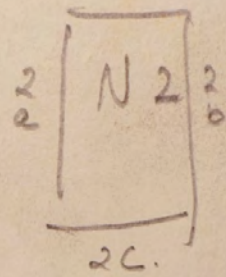
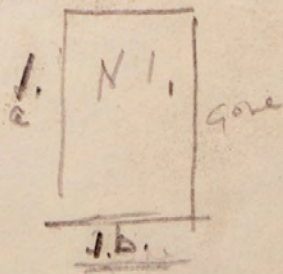
Attic - West end - M

B. Brown

East end - N. - Two windows - 9 over 9
+ parts of frame

partitions - ZZ

Flooring



N.
East
End Attic

Attic door in east end
partition wall is white washed
with window opening in top.
Not marked - didn't want to
mess it up.

the frame is N 3 + N 4
still nailed to partition boards
ZZ. Door has arrow head
latch - 1 queen anne + 1
broken L-H, B. batten

Inside partition boards in attic + door leaders - West End - M
Marked

North wall - NW corner M - 1 - 12

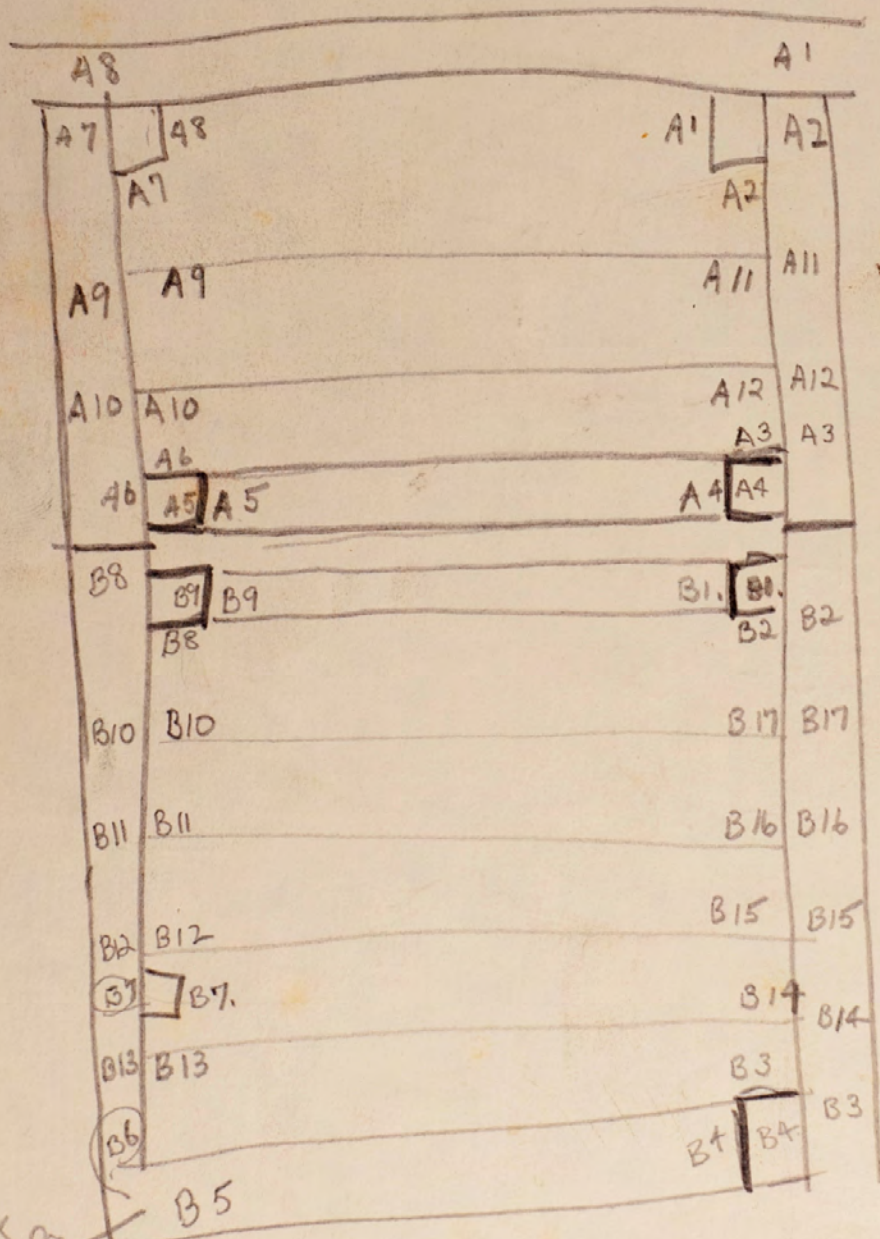
Fire place wall - M - 13 - 30

South wall - M 31 - 46

ELL - Marked in blue -

Roof Rafter	-	<u>N</u>	'	-
	1	-	1	-
	2	-		
	3	-	3	'
	4		4	'
	5	-	5	'
	6	-	6	'
	7	-	7	'

House



ELL, marked in blue
From underside

sheathing marked

1 - 46

1 starts a west side

1 - 13

North end 14 - 25

East side 26 - 46

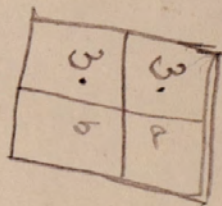
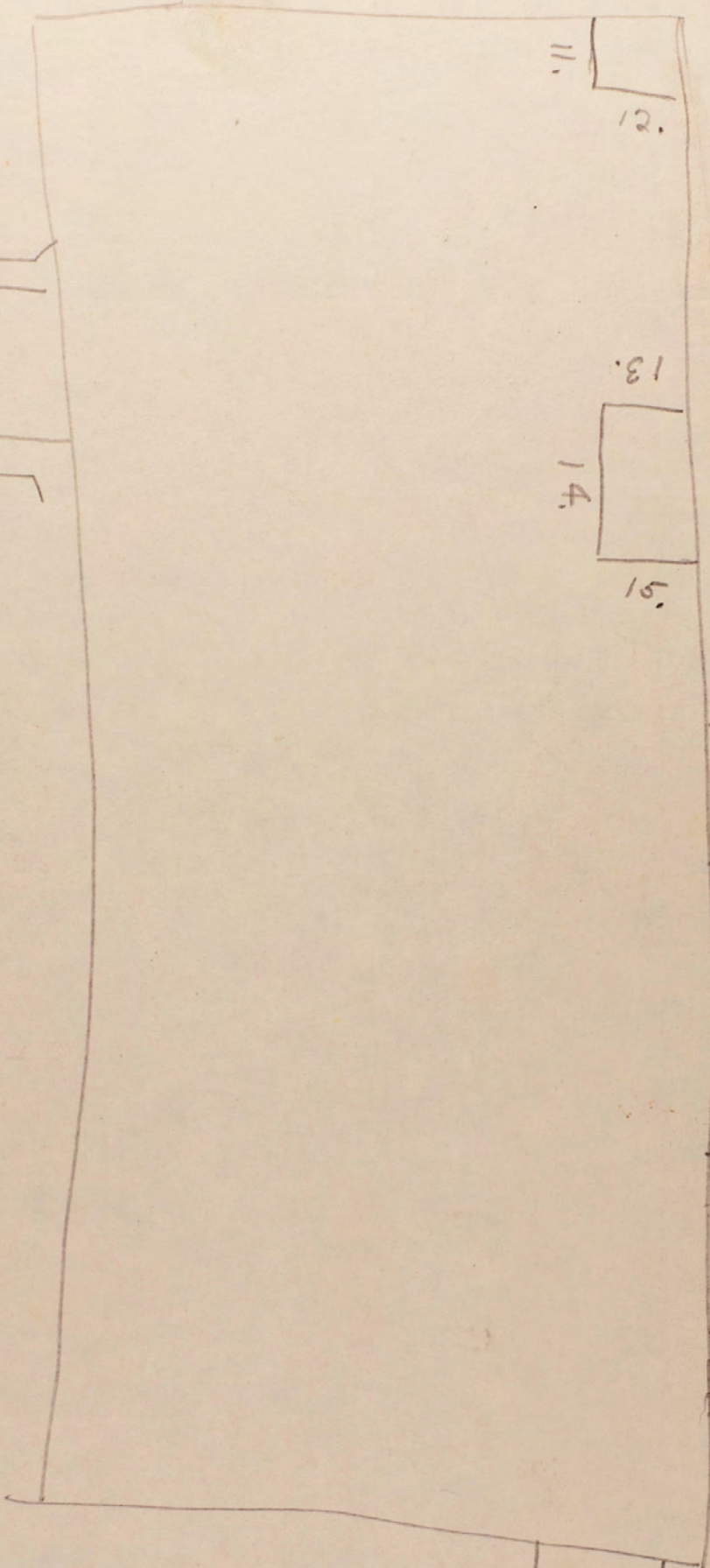
Post missing

1st Floor

North center + N.W. corner

N. ↓

D.



2 panel door
no hardware
sheathing here
Marked on other side

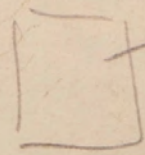
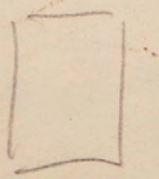
8 panels
6.

J.

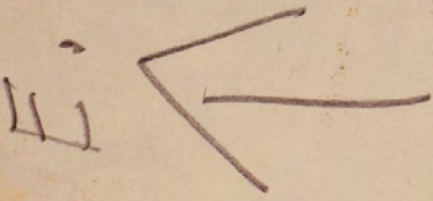
1st Floor

S.W. room

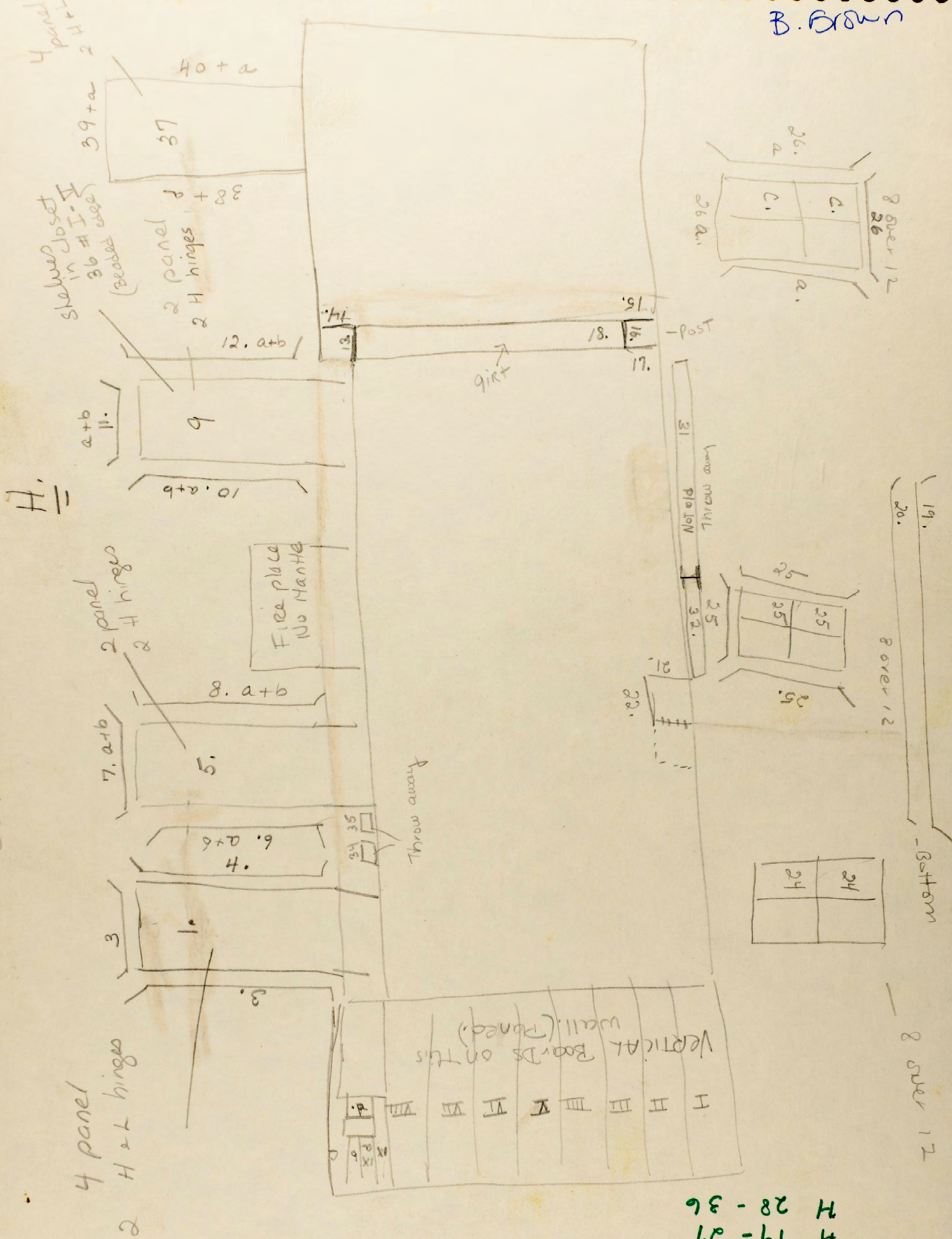
4 panel
no hardware



sash + frame
not original



2nd Floor - N center + N.W. corner



Floor - Stairs East end - North corner = 4 sections

H 11-18 a, b, c.

H 19-27
H 28-36

4 panel
2 H & L hinges

2 panel
2 H hinges

2 panel
2 H hinges

4 panel
2 H & L

Fire place
No Mantle

Throw away

Vertical Boards on this wall. (Poned.)

Lamp mantle

girt

Shelved Jibset
in # I-II
36 # I-II
(beaded wood)

Bottom

8 over 12

8 over 12

8 over 12

2nd Floor N.E. corner

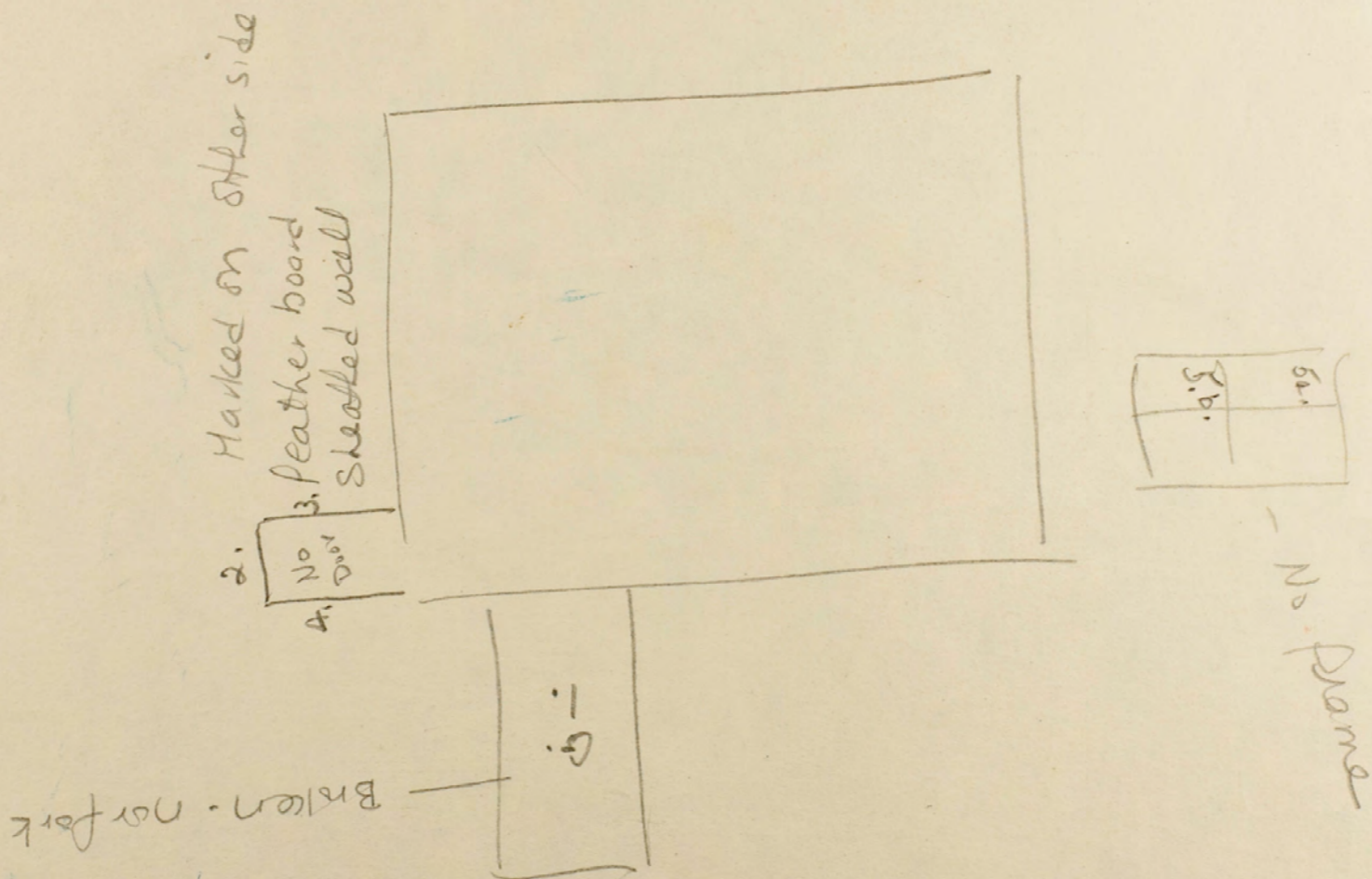
↑
N.

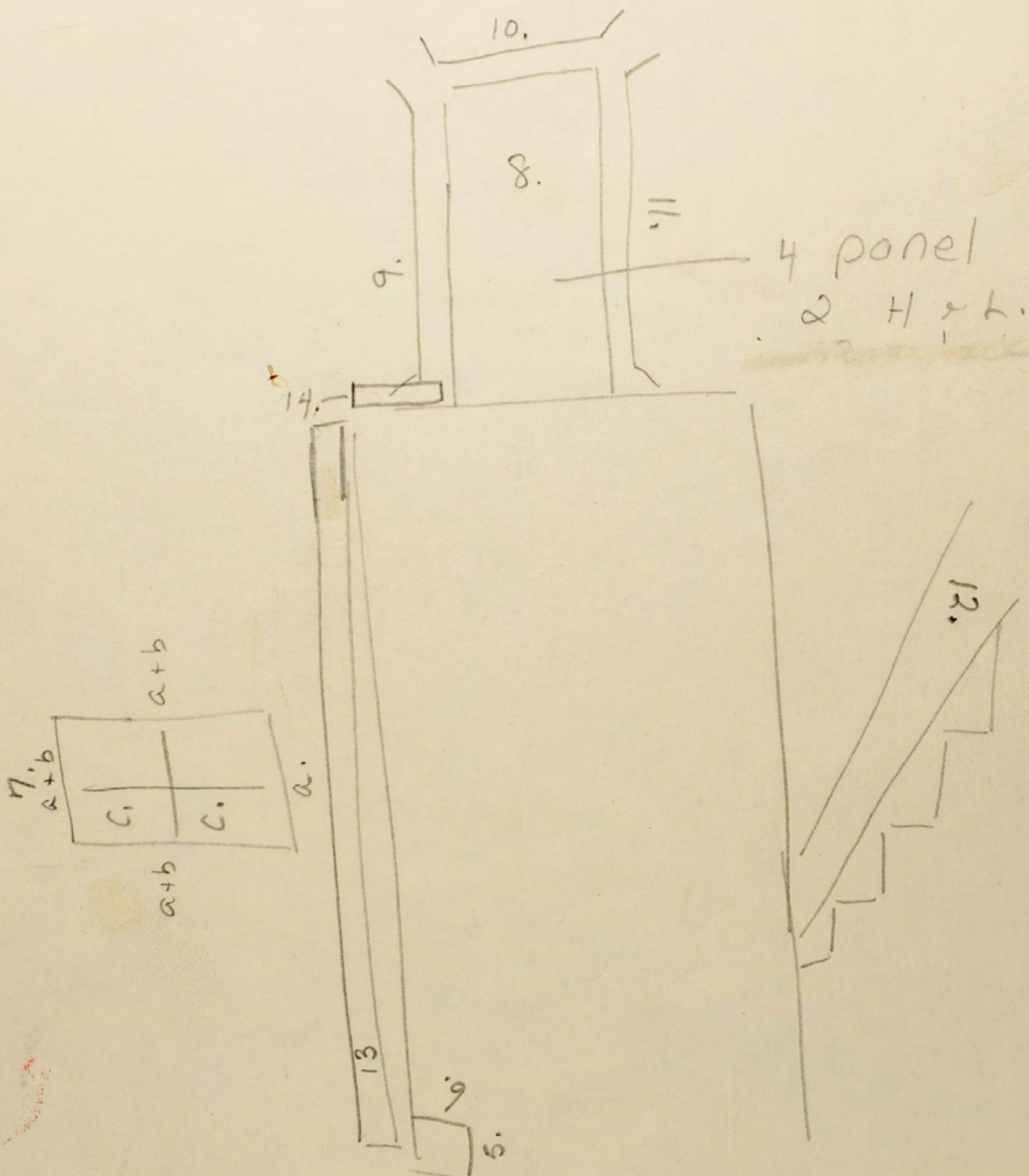
G.

Flour

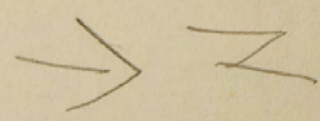
G 1-9

Starting N corner

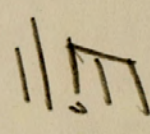




4 panel 2 - H & L
 iron box lock - 2 brass knobs



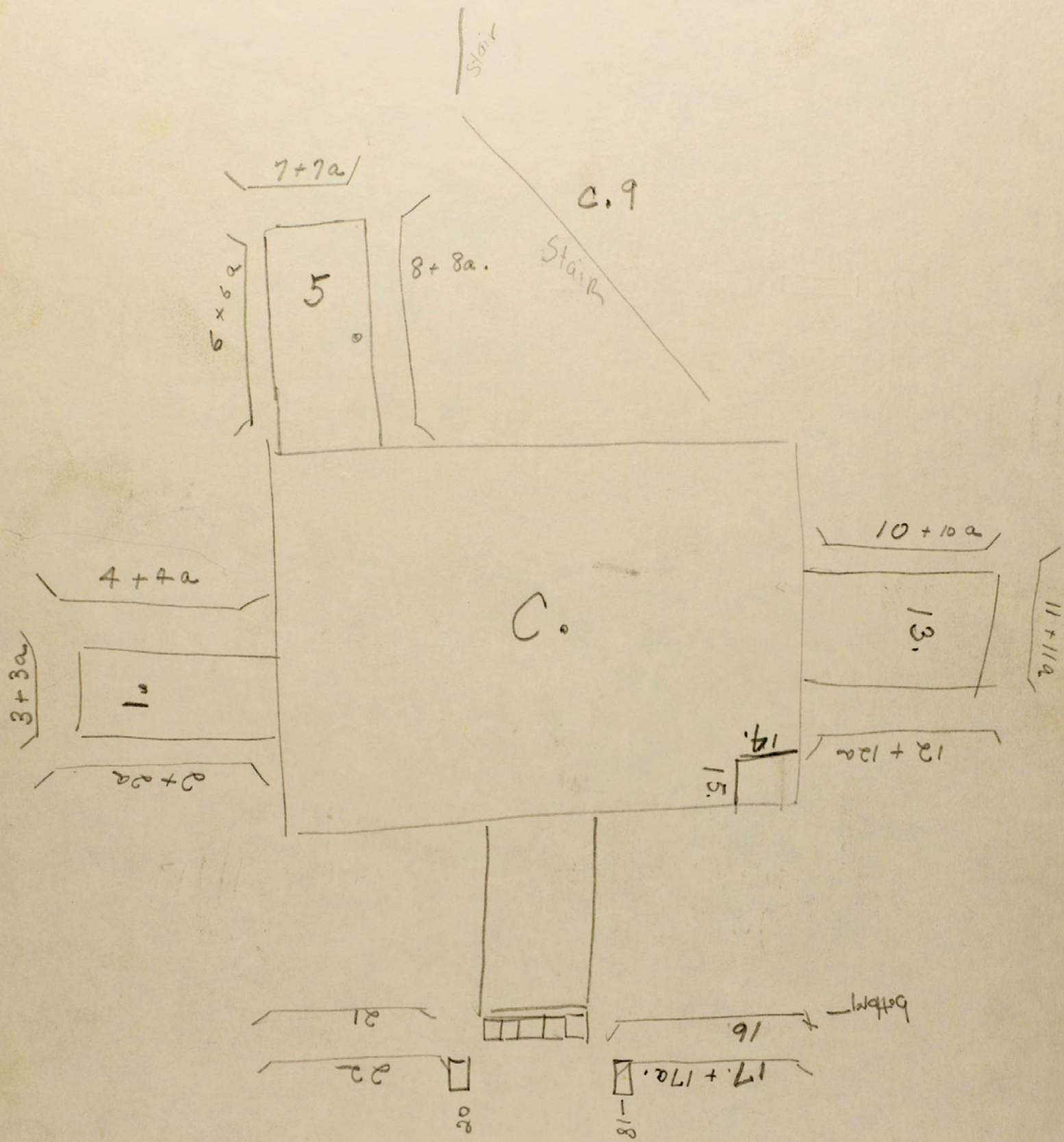
Hall - 2nd Floor



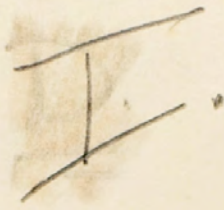
Floor - stairs - ~~North~~ north
 E 1-3 + 3a at
 stair-top

B. Brown

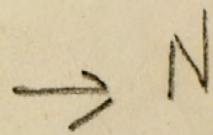
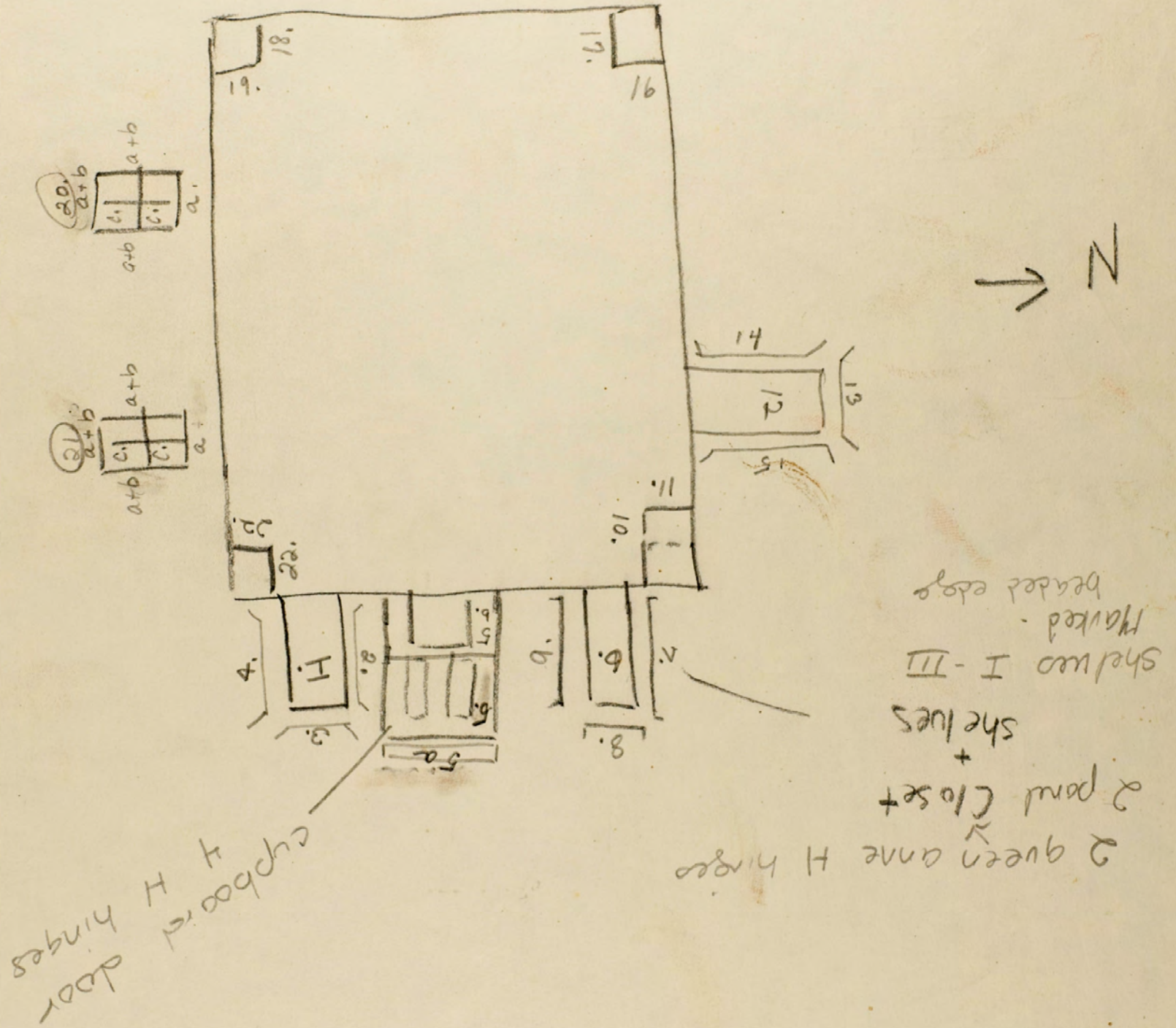
FRONT Hall - 1st ~~Fatt~~ FLOOR
C.



2nd Floor - S.W.



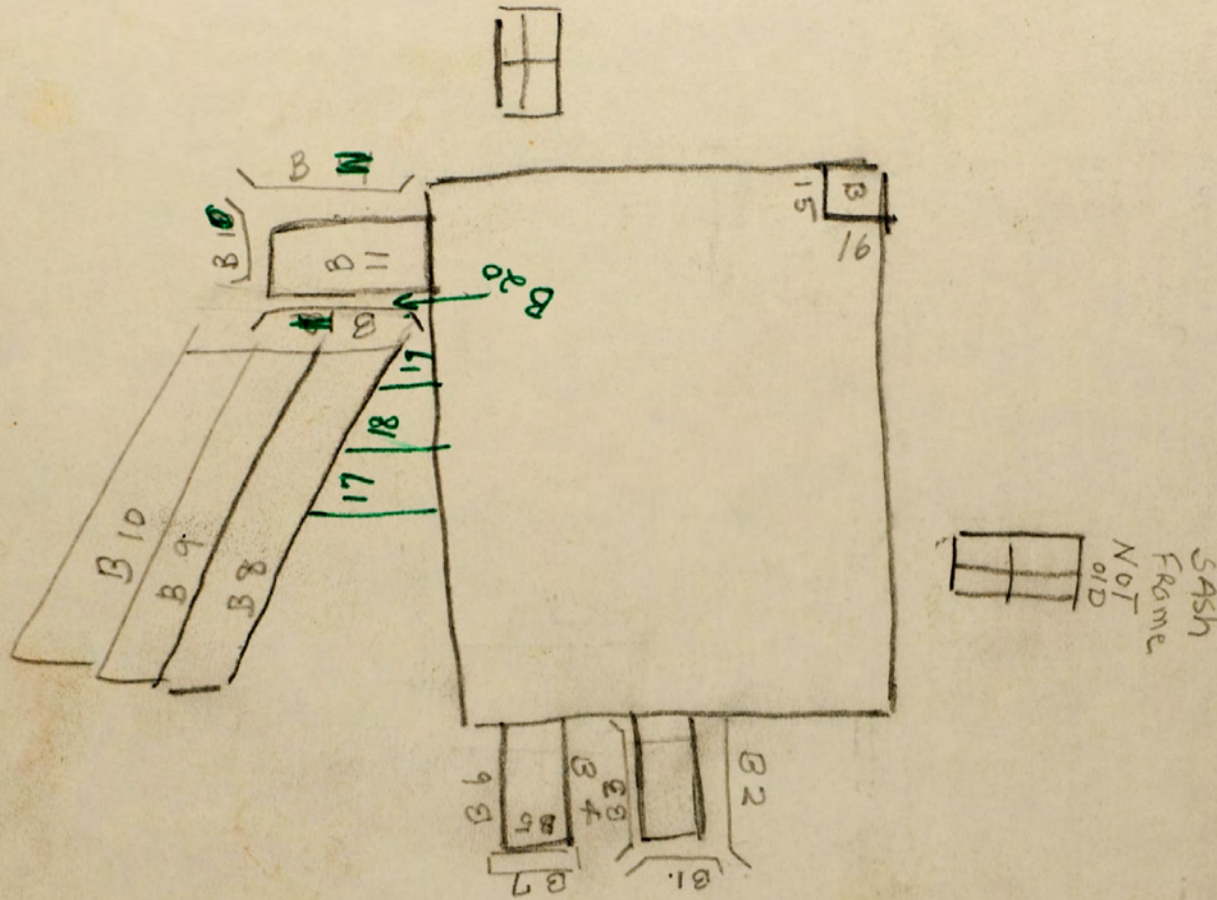
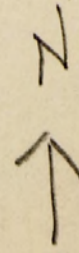
Floor 1-15
Start east wall north
corner



1st Floor - NE corner

B / B.
Brown

B Floor - ~~Starting~~ NE corner
B-1-7



K Floor

4 sections

starting N. E corner

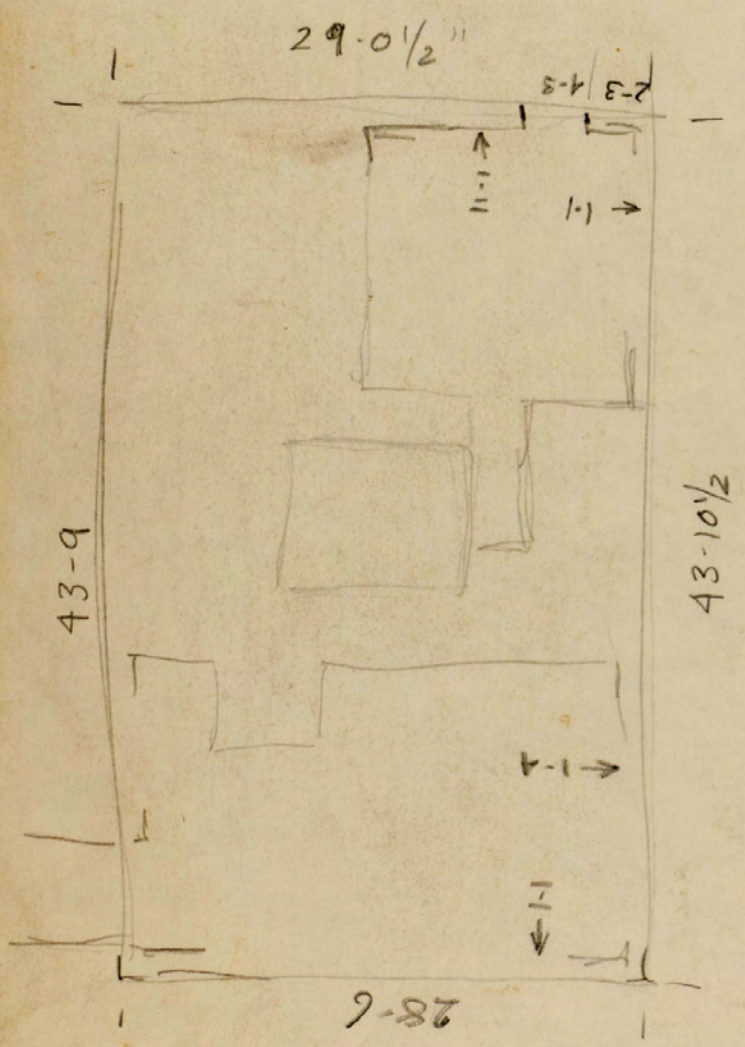
K 1-11

12-18

19, 19a + b (surrounding
trap door) - 27

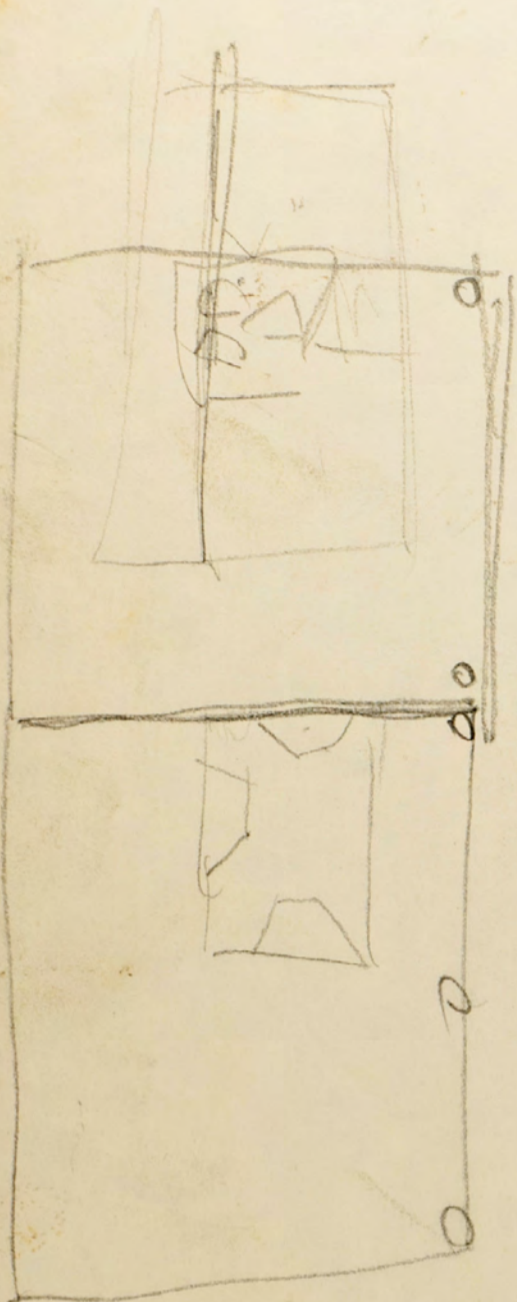
28-37





cellar summer?

B. Brown



8-□□



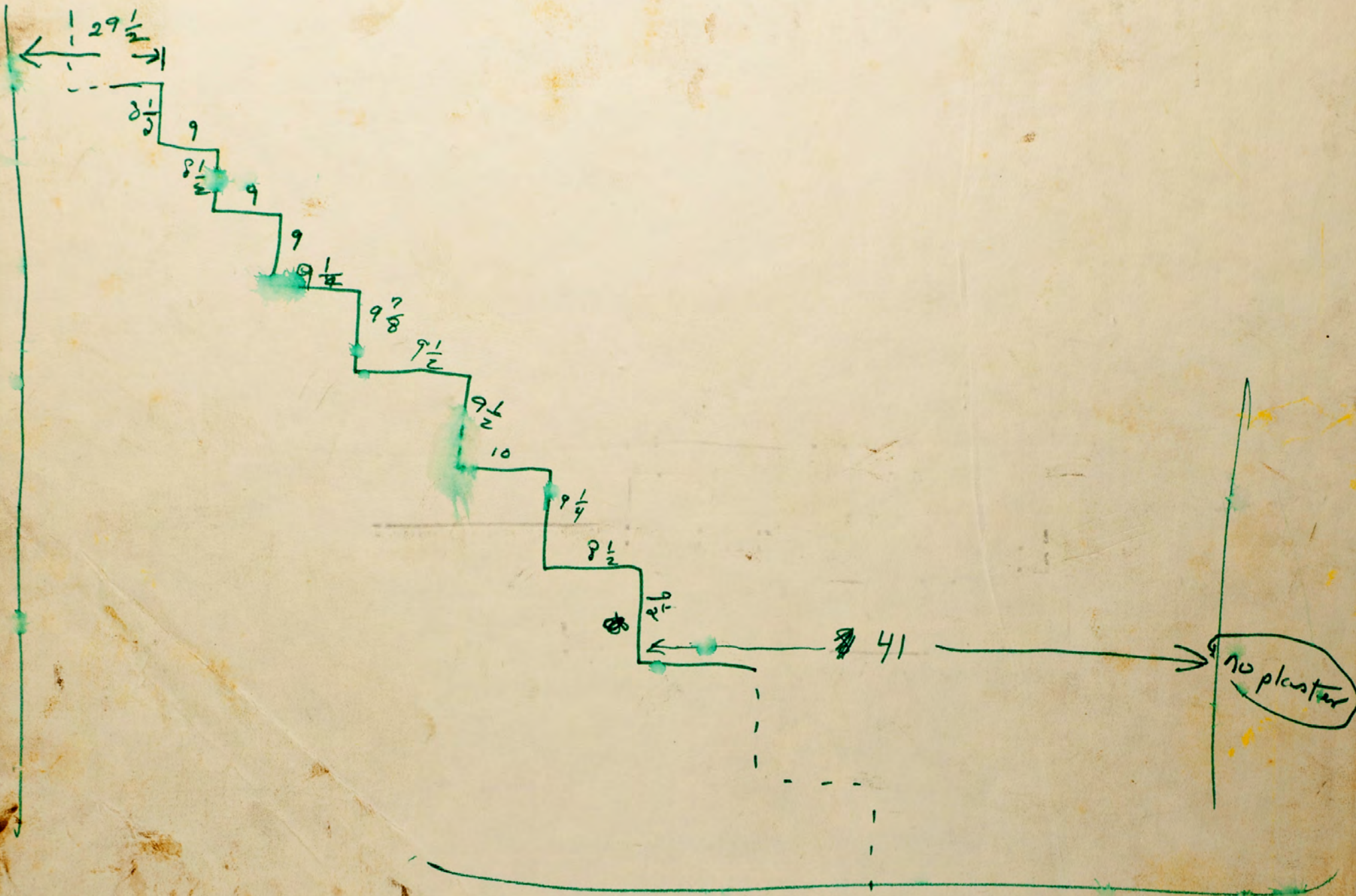
2 ←



7□□
Lmcp



Stair - 1st to 2nd floor - N. E corner room



$$\begin{array}{r} 6 \overline{) 7.75} \\ \underline{6} \\ 175 \\ \underline{150} \\ 25 \end{array}$$

B. Brown

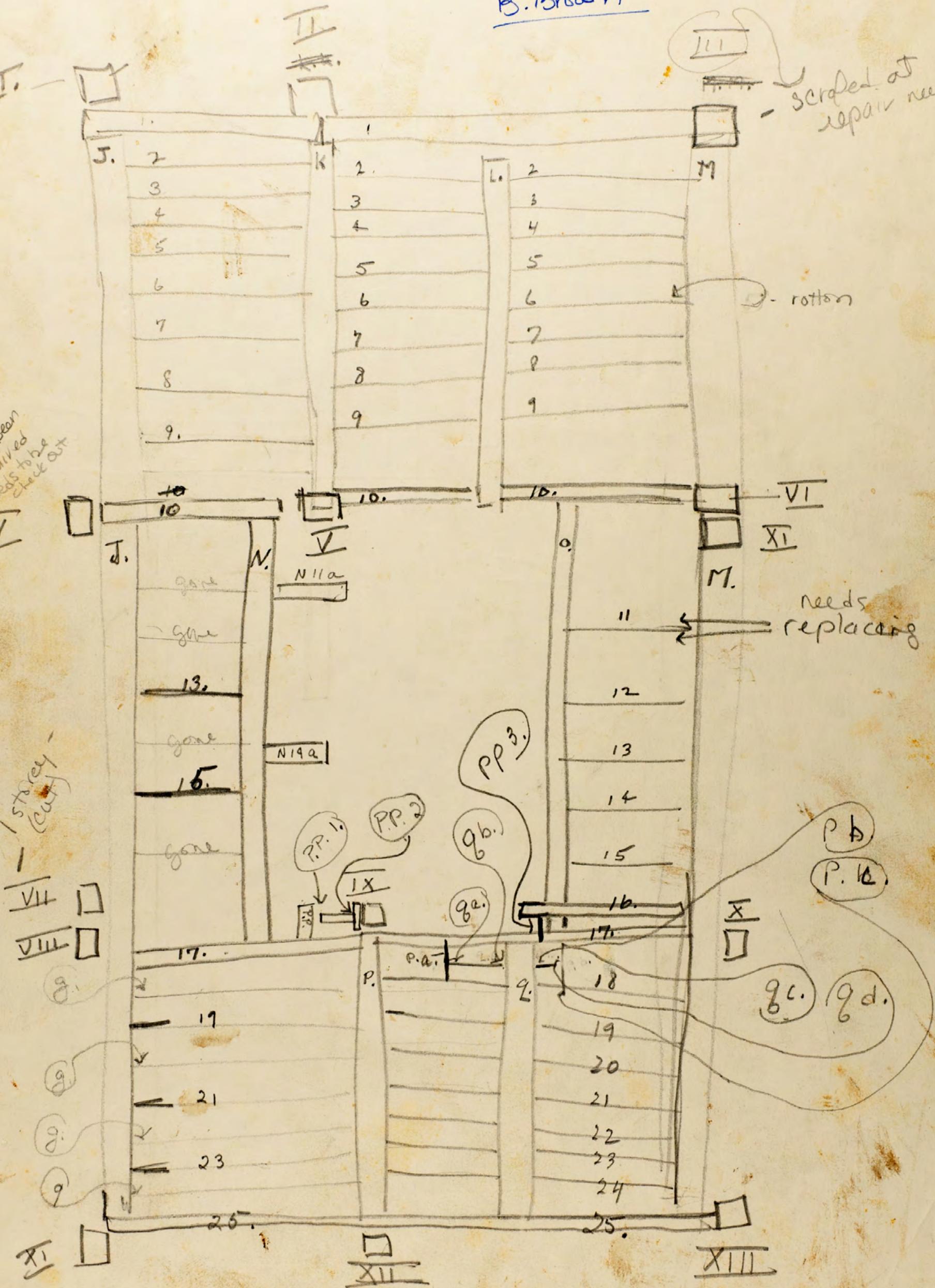
Sec. floor.

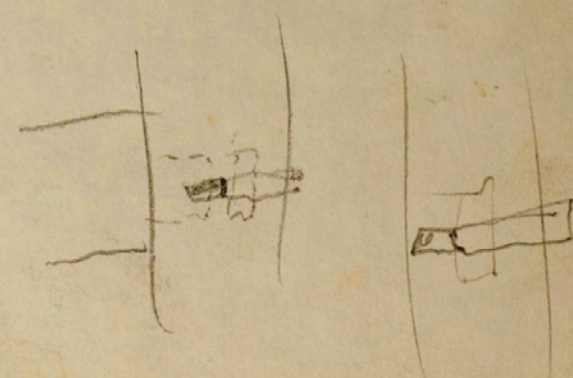
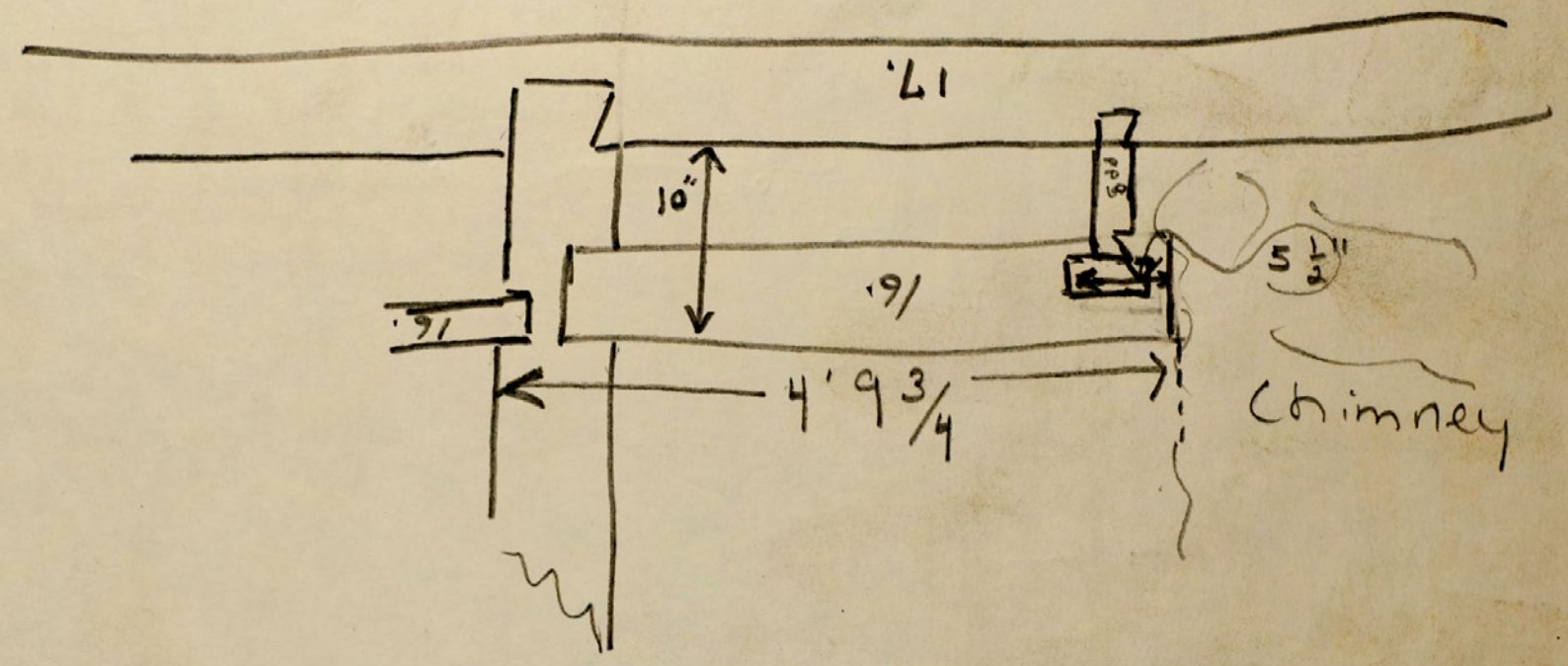
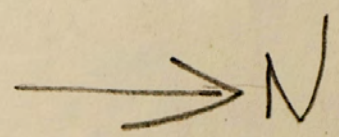
scrapped at joint
repair needed

post been
repaired
needs to be
checked out

rotten

needs
replacing





22. Second floor front. Detail of crown moulding, Approx. 8" x 3" out.

2223. Detail of stairs at second floor.

23, 24
24, 25. First floor ^{5'-2 3/4"} N.W. Mantle.
Shelf ht. 5'-2 3/4" L.O.A. 6'-4". Mantle op. 4'-8 7/8" w. x 3'-6" h.
Fire place op. 3'-11" w. x 3'-1" Hearth out. was soapstone blocks 11 1/2" x 4 3/4"
↳ mostly missing.

25
26. First floor N.W. Mantle detail of corner.

26
227. First floor N.W. N. Shutters open. 4'-11 1/4" x 9 1/2"

27, R
27, 28. " " " " extended 4'-11 1/4" x 1'-6 5/8"

28
30. " " " " closed " x 3'-1"

28
31. " " " W shutters open. as above.

First floor N.W. Detail of chair rail and door frame.
Rail 3 5/8" w. Top moulding 1 5/8" x 1 1/8" out of plaster.
Frame 3 1/8" w. moulding 1 1/4" x 1"

29
32, 33. First floor S.W. Mantle
13 14 Shelf ht. 4'-10 3/4". L.O.A. 6'-6 1/4". Mantle op. 4'-2 3/4" w. x 3'-3" h.
Fire place op. 3'-6 1/2" w. x 2'-10 1/2" h. outer hearth missing.

30
34. 12 First floor S.W. Mantle detail of corner.

31
35. " First floor S.W. detail of crown moulding

32
36. 10 First floor S.W. detail of chair rail and door frame.
Rail 3 5/8" w. top moulding 1 1/16" x 1 1/8" out of plaster.
Frame 4 7/8" w. moulding 1 3/8" x 3/4"

33
37. 9 First floor shutters open. 4'-10" x 9 1/4"

34
38. 8 " " details of window casing.

35, 36
39, 40. First floor S.E. Mantle. Shelf ht. 5'-2 1/4" L.O.A. 6'-3 1/4"
6, 7 Mantle op. 4'-6 1/2" w. x 3'-4 1/4" h. fireplace op. 3'-9 1/8" w. x 2'-11 3/4" h.
fireplace face Italian marble. Hearth white marble and soapstone,
4'-7 1/2" x 2'-0"

37
41. 5 First floor S.E. detail of mantle corner.

38
42. 4 First floor S.E. detail of mantle center

39
43. 3 First floor S.E. Window casing, shutters open.

40
44. 2 " " " " " shutters closed

41
45. 1 First floor S.E. arch

1, 2 ^{Px} 1, 2, 3
19 20

Second floor N.W. mantle.
Shelf ht. 4'-9 1/2" L.O.A. 6'-1 3/4" mantle op. 3'-4" w. x 2'-11 3/4" h.
fire place op. 2'-11 3/4" w. x 2'-9" h. Gray marble outside hearth

1'-0 1/2" sqs.
5 across
2 out

3 ^{Px} 4.

Second floor N.W. detail of chair rail and door frame.
Rail 3 1/2" wide. Moulding 2 3/16" w. x 1 1/8" out of plaster.
Frame 4 7/8" wide. Moulding 1 1/4" x 3/4". 1/4" bead on frame.

5. Second floor N.W. Door hung. 2'-6 1/2" x 6'-6 1/4"

4, 5 6, 7 ^{R2}
R 17 18

Second floor S.W. Mantle
Shelf ht. 4'-9 1/2" L.O.A. 7'-1" mantle op. 4'-4" w. x 3'-1 3/4" h.
fire place op. 3'-8" w. x 2'-9" h. Gray marble out. hearth

1'-0 1/2" sqs.
4 1/2 across
2 out

6 ⁸ 16 Second floor S.W. Mantle. Detail of corner.

7 9. Second floor S.W. Shutters folded. 4'-10" x 9 1/4"

8 10. " " " Shutters extended 4'-10" x 1'-4 3/8"

9 11. " " " Shutters closed 4'-10" x 2'-8 1/2"

10 12. Second floor S.W. detail of chair rail and door frame
Rail 3 5/8" wide. Moulding 1 5/8" w x 1 1/4" out of plaster.
Frame 4 3/4" w. Moulding 1 3/8" x 3/4". 3/16" bead on frame

11 13. Second floor S.W. detail of window casing.

12 " " " detail of cornice, moulding
13 14. Second floor S.W. Door hung. 2'-6 3/4" x 6'-7 1/2"

14, 15 15, 16 Second floor S.E. Mantle.

Shelf ht. 4'-11 3/4". L.O.A. 7'-0 3/4". mantle op. 4'-5 1/8" w. x 3'-3"
fire place op. 3'-7 1/2" w. x 2'-10". Gray marble out. hearth
Details similar to S.W.

1'-0 1/2" sqs.
4 1/2 across
2 out

16 17. Second floor S.E. Mantle detail of corner.

17 18. Second floor S.E. Shutters folded 4'-10" x 9 5/8"

18 19. " " " shutters extended 4'-10" x 1'-4 3/8"

19 ~~20~~ 20 15 " " " shutters closed 4'-10" x 2'-8 1/2"
detail of window casing.

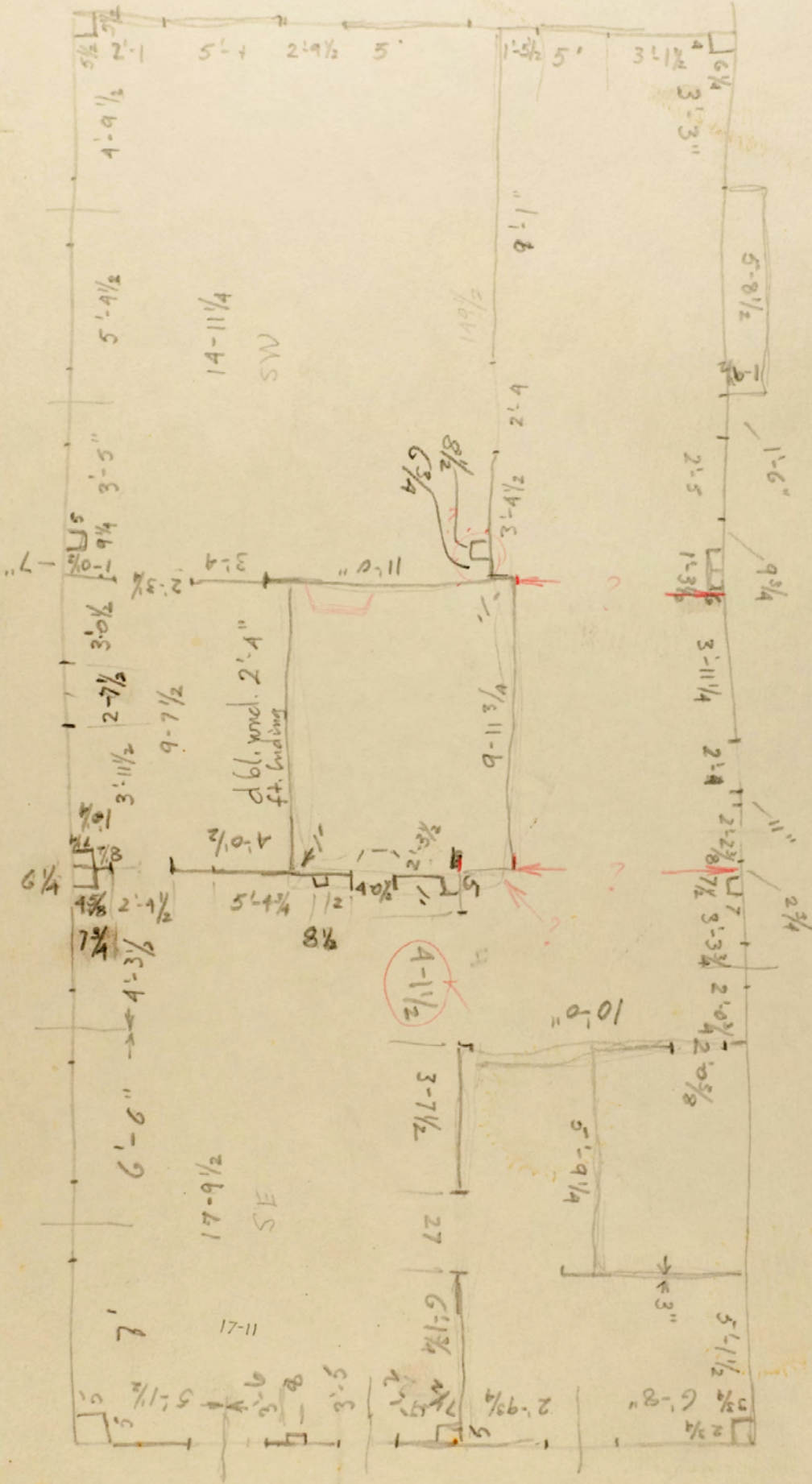
21 21. Second floor N.E. Mantle. Shelf ht. 4'-11 1/2" L.O.A. 5'-10 7/8"
Mantle op. 4'-4" w. x 3'-4". fire place blocked. Hearth covered.

Hank Johnson
 1st rt after Places Corners
 after water wheel, 1st on left.

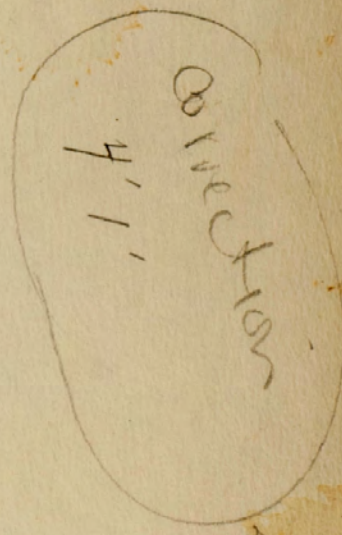
B. Brown

inside outside 43'-6" x 28'-3"

3" walls.



28 1/2" for windows (12/12)



43-10
 6
 3 1/2
 5/8

Locate Ell on house.

Measure of hearth.

" front of chim. in Attic. 5-2

~~" roof of ell. (over)~~
cellars

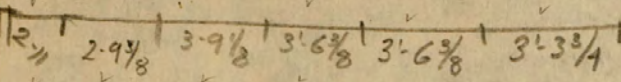
22
17
154
22
374

Don can't work tomorrow.

3/4" drafting tape

Rapido-Graph ink for. Hatt.

Beriali



rafters 7'-2, half lapped.

3, 3 x 3 1/2, 3 1/2

Ell.

9:15 - 5:30

$$\begin{array}{r} 3 \\ 5 \\ \hline 8 \\ 185 \\ \hline 148.0 \end{array}$$

$$\begin{array}{r} 14.80 \\ 5 \\ \hline 74.00 \end{array}$$

$$\begin{array}{r} 9.3 \\ 3 \\ \hline 27.9.0 \\ 266 \overline{) 2790.00} \\ \underline{1800} \\ 1064 \\ \underline{2360} \\ 94 \end{array}$$

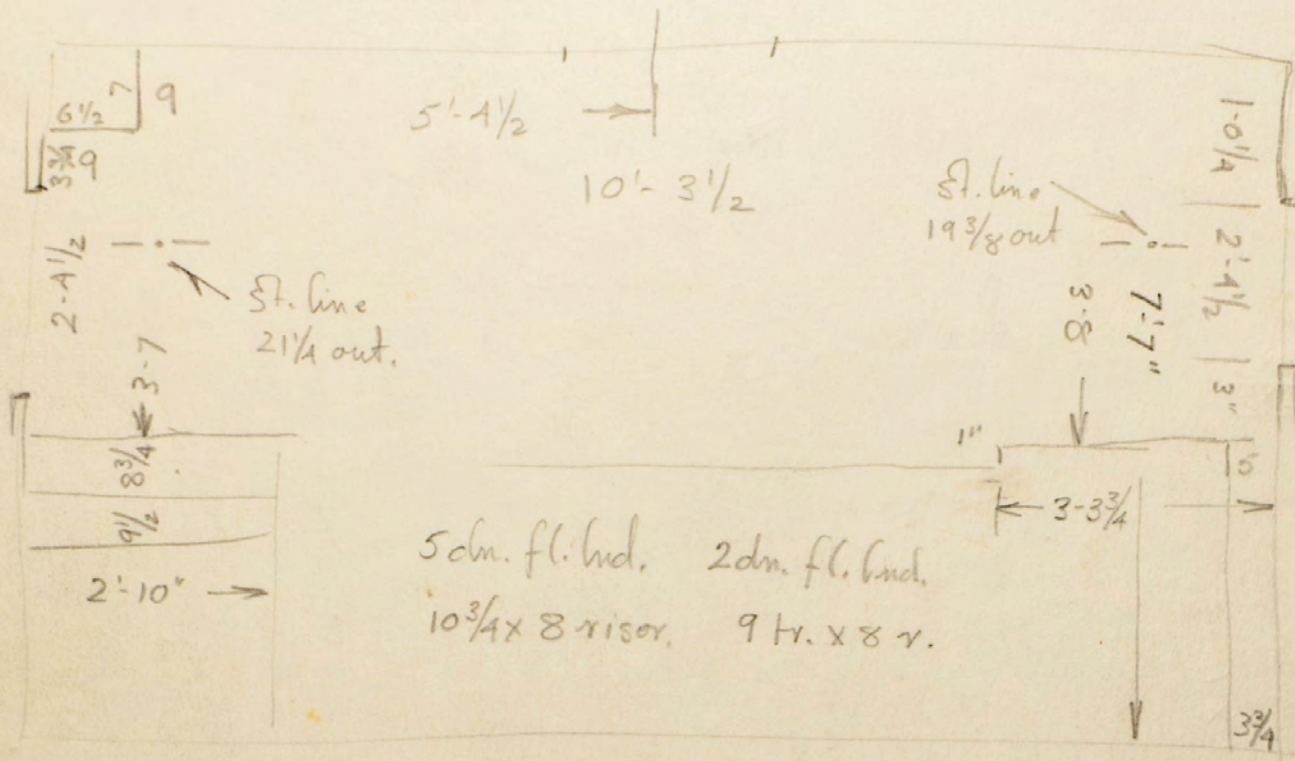
David Timms \$160. two course.
45 min. 7 wks - Aug. 8

246-1535 home.

$$\begin{array}{r} 9.3 \\ \times 26.6 \\ \hline 55.8 \\ 266 \\ \hline 279 \end{array}$$

Hall 2nd.

B. Brown



Hall 1st



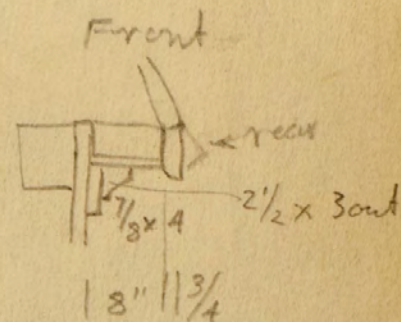
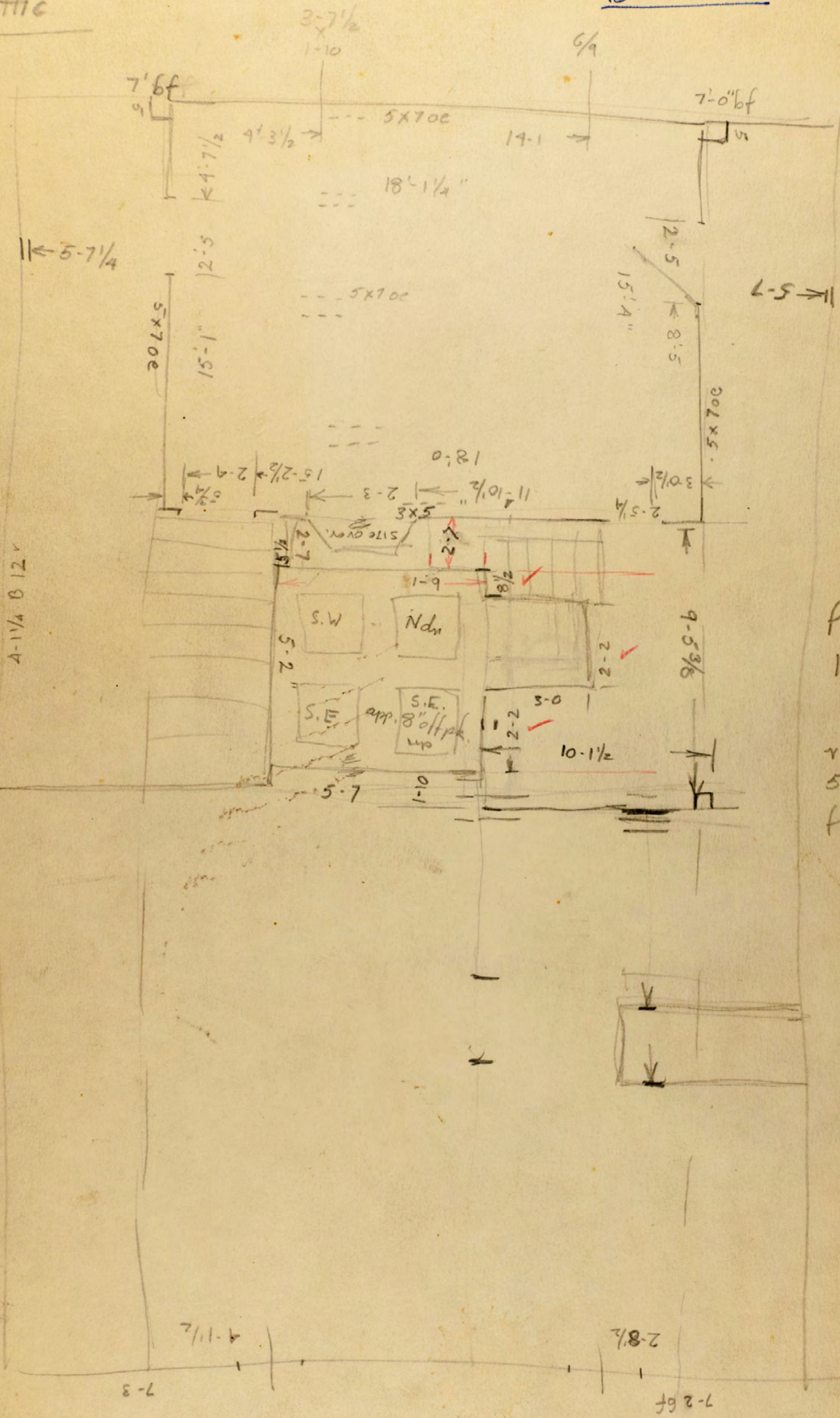
Attic

B. Brown

overhang?
measure posts

- B1 3-5
- 3-6 3/4
- 3-6 1/2
- 3-11
- 3-10 1/4 (p)
- B 6 3-9 1/2 (2-10 long)
- 4-0 1/2
- 4-1 1/2
- 4-0 3/4
- 4-1
- 4-1 1/4 B 12

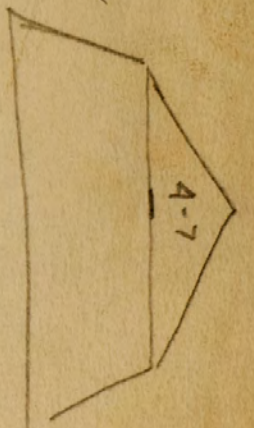
- 12-0 1/4
- 5 1/4
- 2-9
- 15-2 1/2
- 3-0 1/2



front rain table
12\"/>

rear overhang
5\", same as
front

- A12- 4-11
- 4-11
- 4-1
- 4-0
- 4-0 1/2
- 4-0 (p)
- 3-9
- 4-0 1/4
- 3-7
- 3-6 1/2
- 3-3 1/4 (A)

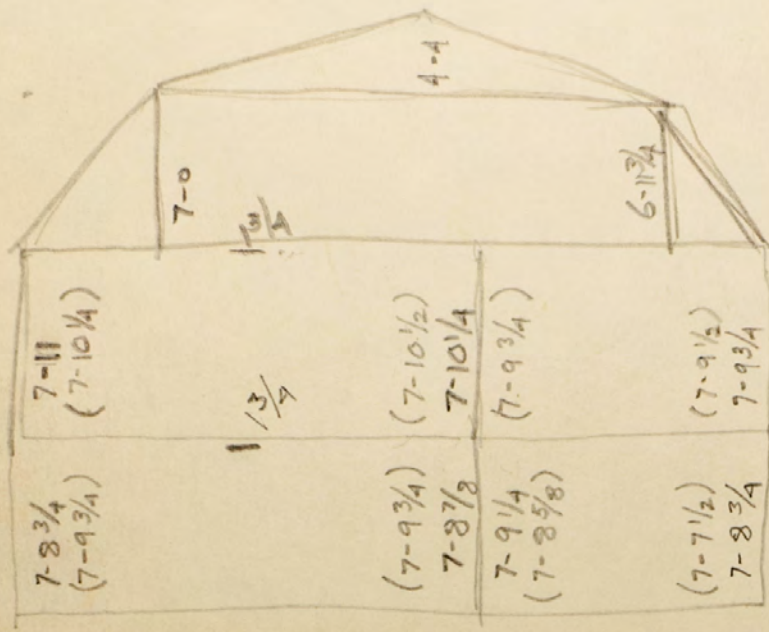


7-3

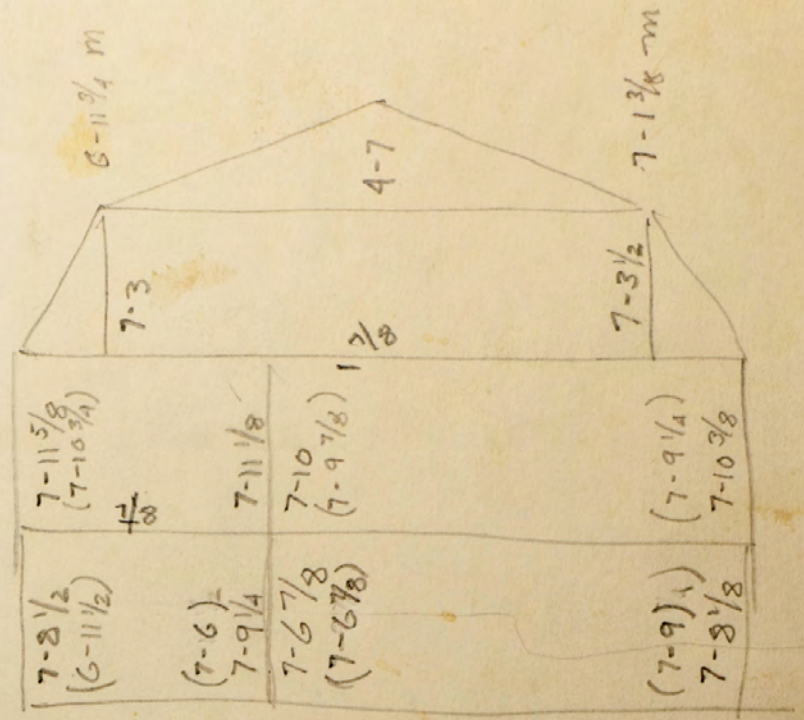
4-1 1/2

2-8 1/2

7-2 bf



West end



East end.

7-9

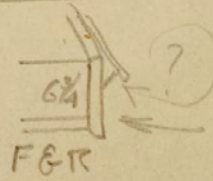
upper rafters - 10-5 3/4 - 6x5 x 5 1/2 W. end.

A 7 10-6 3/4 - 6x5 x 5 E. end
 A 6 5 3/4
 5 4 3/4
 12 5 1/4

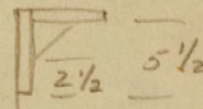
B 5- 10-6 1/2
 " 12 - 5 3/4

Over hang 8" front. Shoe 1 1/2 thk. x 12 1/2
 5 1/2 r. " 1 1/2 " x 10 3/4

window



shows 2 1/4 year.



measure sills at chim.

7-8 1/2

" over hang & cornice.
5/2 N 8 S

7/8
7-11 5/8

draw windows in fascia

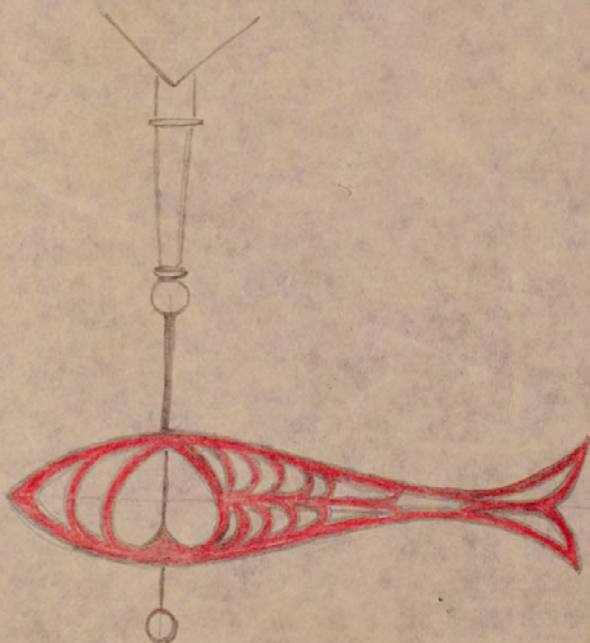
7/8
7-3
23-0 7/8 E

6-11 3/4
22-9 3/4 W.

Front door-way

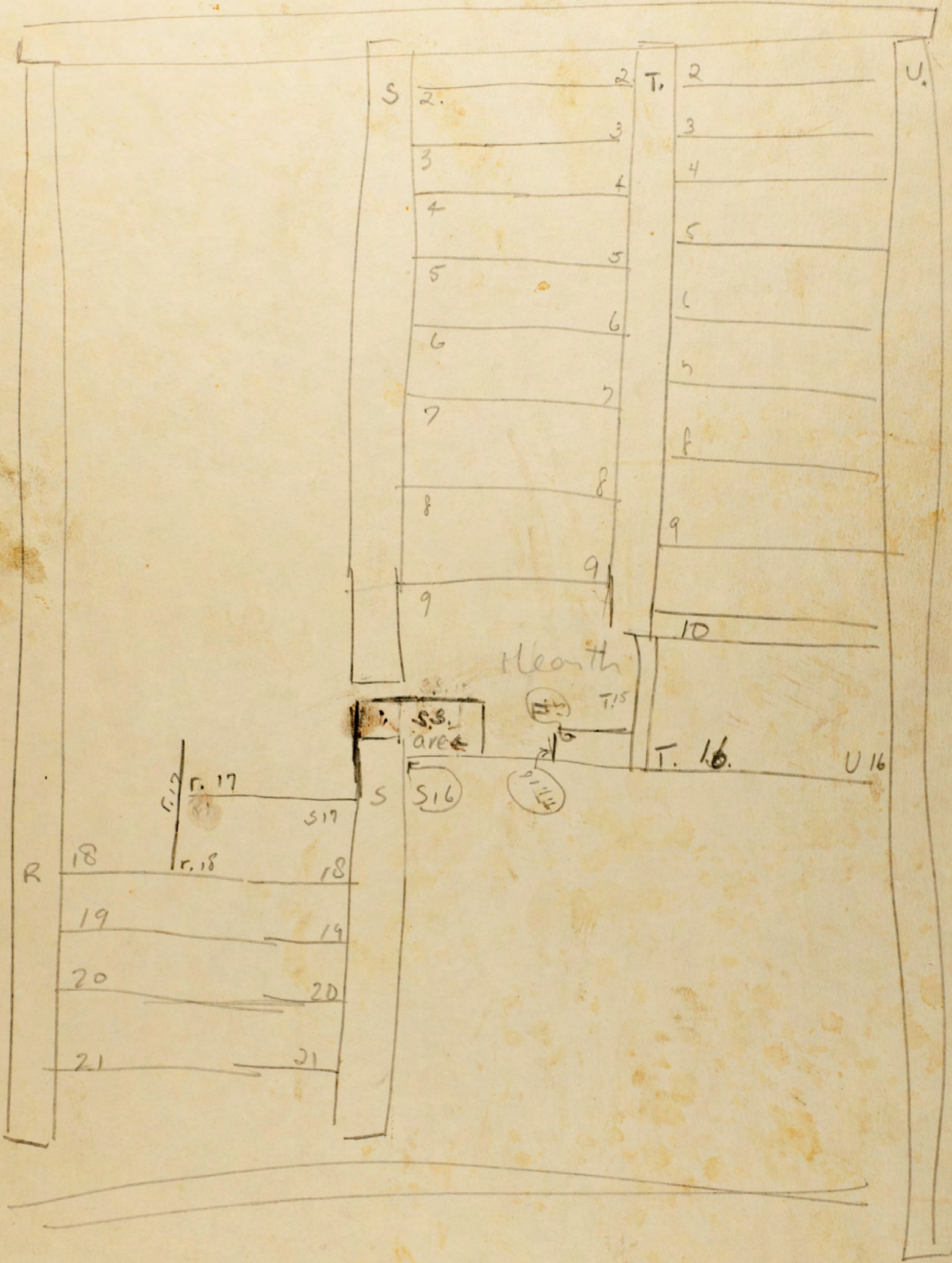
find all summers

3055	237
190	229
<u>419</u>	<u>13</u>
224.84	



E
↑

B. Brown



Separations

Rf. East - NA1 2 1/2" no block.

A2 2" block on cell.

A3 2 1/4" " " "

A4 3 1/8" " " "

A5 3 1/2" " " "

A6 2 1/4" " over post

7 2 1/2

8 2 3/4

9 2

10 2

11 1 1/4

12 0

B1 0 on purlins

B2 2 1/8

3 3 1/8

4 5 1/8

5 4 1/2

6 0 over post

7 0

8 0

9 0

10 0

11 0

12 0 on purlin

} purlin pad

2nd S.W.

chim. grt. 2 3/4 below ch. frm.

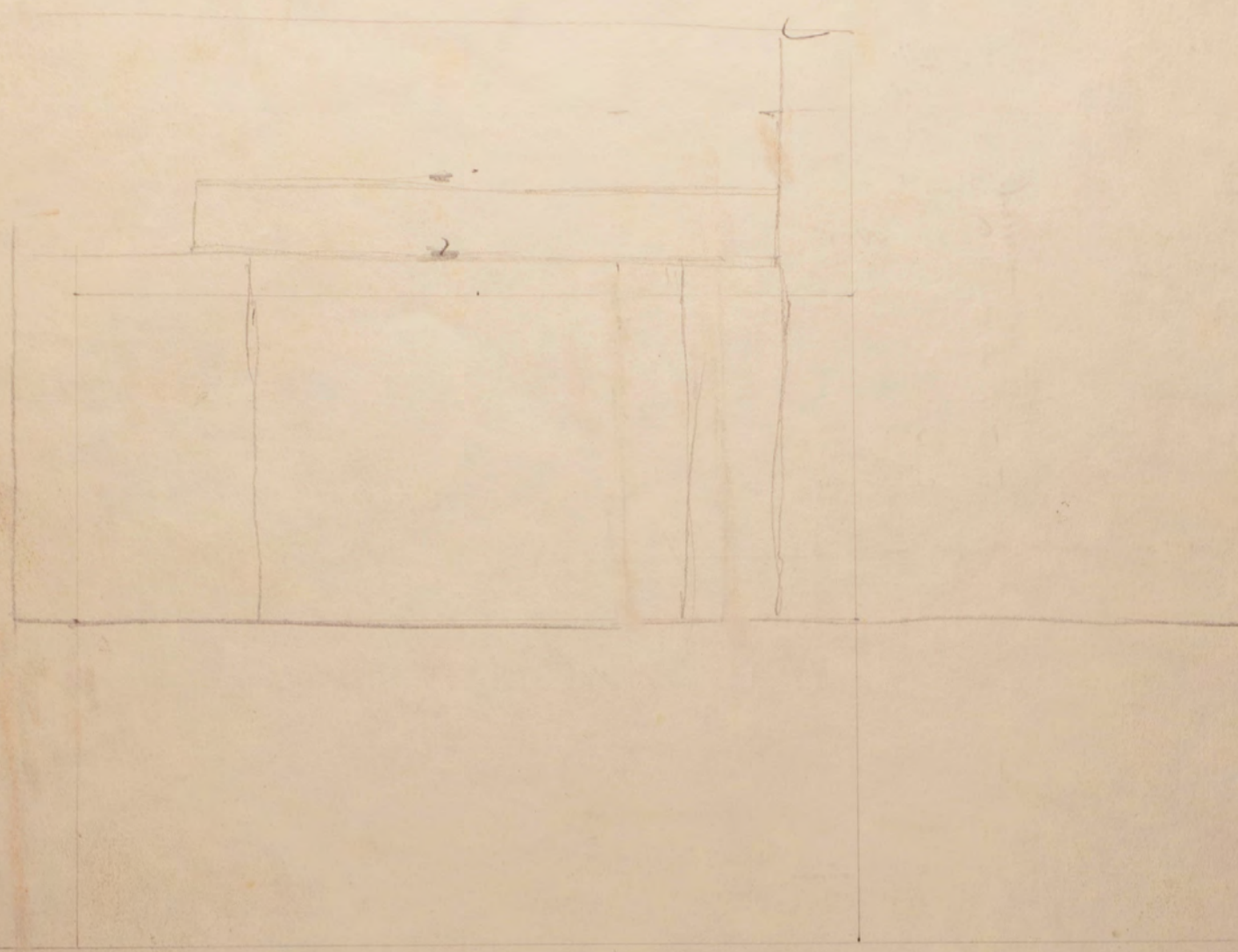
this side pegged

this side nailed

Amazing
Trace

45
6
270

B. Brown



16-29

PRIOR
 ASHMP
 PHAMIS
 SM PHASIM (MISPAH)
 MISNAP
 RIM POT IMPROT MOR TIP
 TRIMPO
 PATRIH
 OPTRIM
 (MIRPT)
 TOPIRH
 PITMOR
 POT MIR
 PROMPT
 FRONT