

Roger Williams University

DOCS@RWU

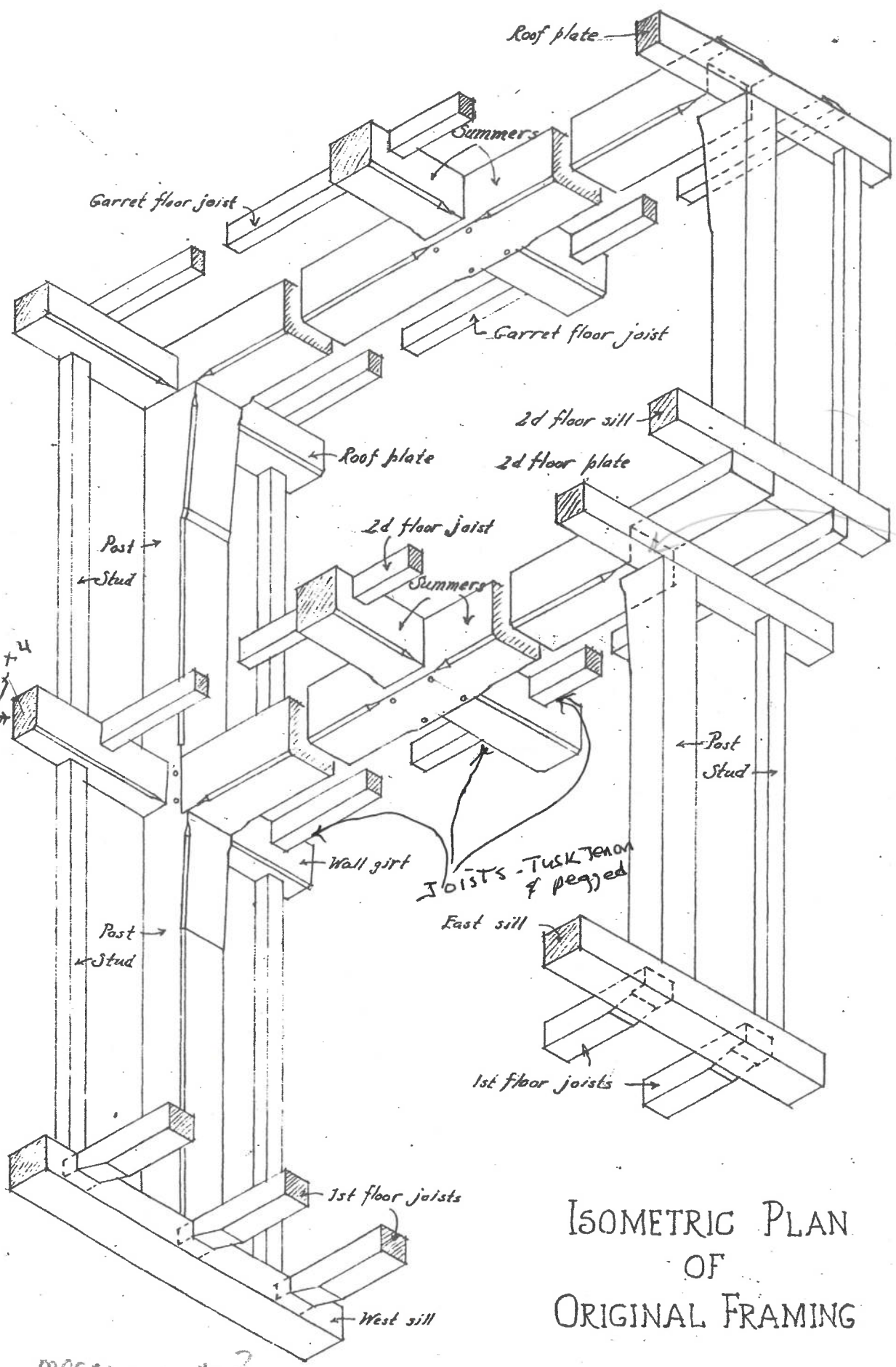
Documentation

Captain Thomas Paine House: Baker's Drawings and Notes on Frame and Floor Plans

Follow this and additional works at: https://docs.rwu.edu/baker_documentation



Part of the [Historic Preservation and Conservation Commons](#)



Joist
3x4
Summer
10 1/2 x 9
Chimney gir
11 x 7 1/2
Joists -
West - Tusk Tenon
both ends
East - T. Tenon
Summer end
1st ~~floor~~

2nd floor
East -
Joist TT
both ends
?

ISOMETRIC PLAN
OF
ORIGINAL FRAMING

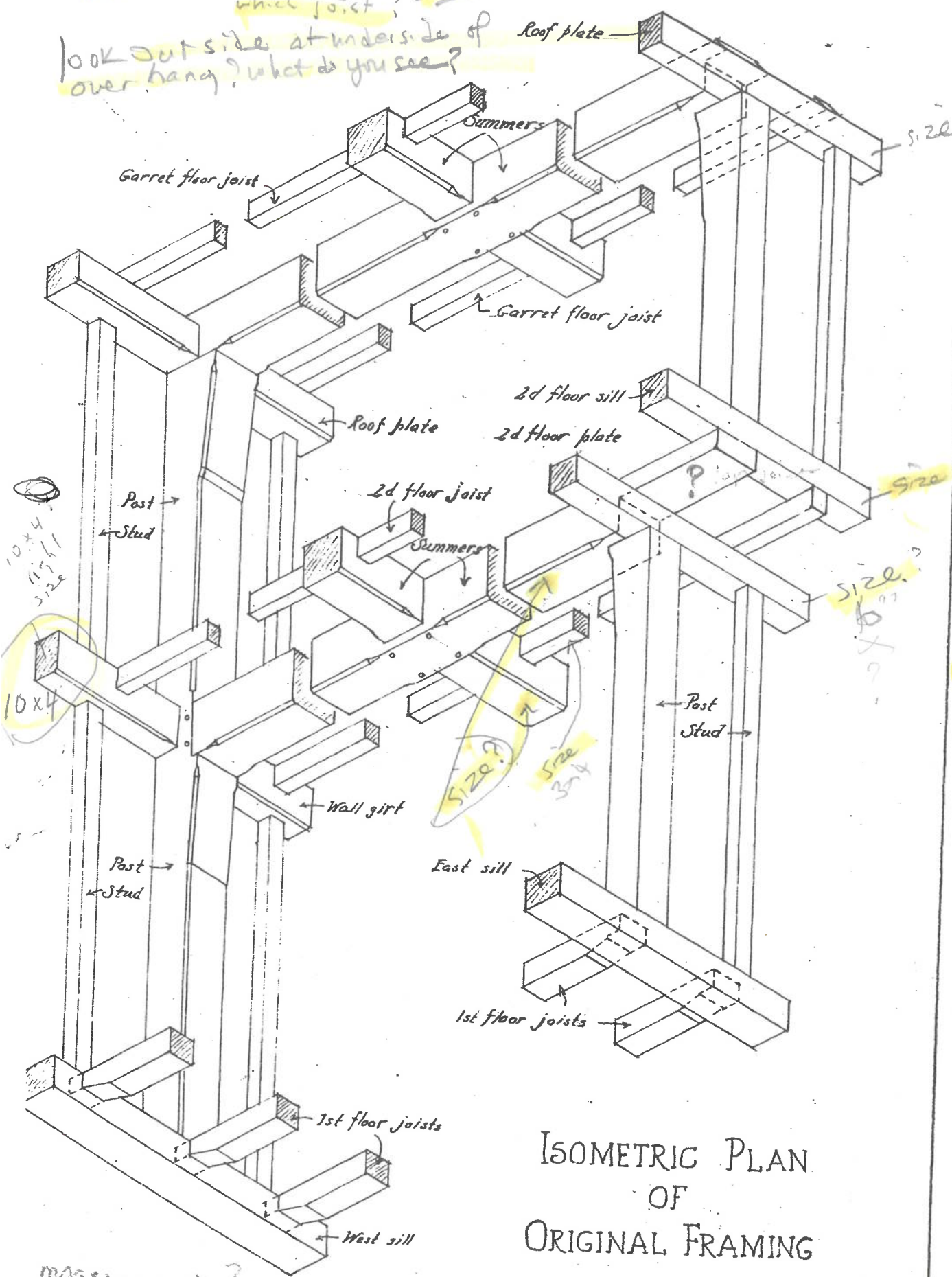
Fig. 6

measurements?
• AWB

Tusk tenons - exactly which joist? also second floor

05/20

look outside at underside of overhang? what do you see?



Clock
2nd Floor
hall change
change of 90°
into bed?

~~2nd floor~~
Is Summ
in center
up room

Hall
check -
nails in
stair track
also
self joint

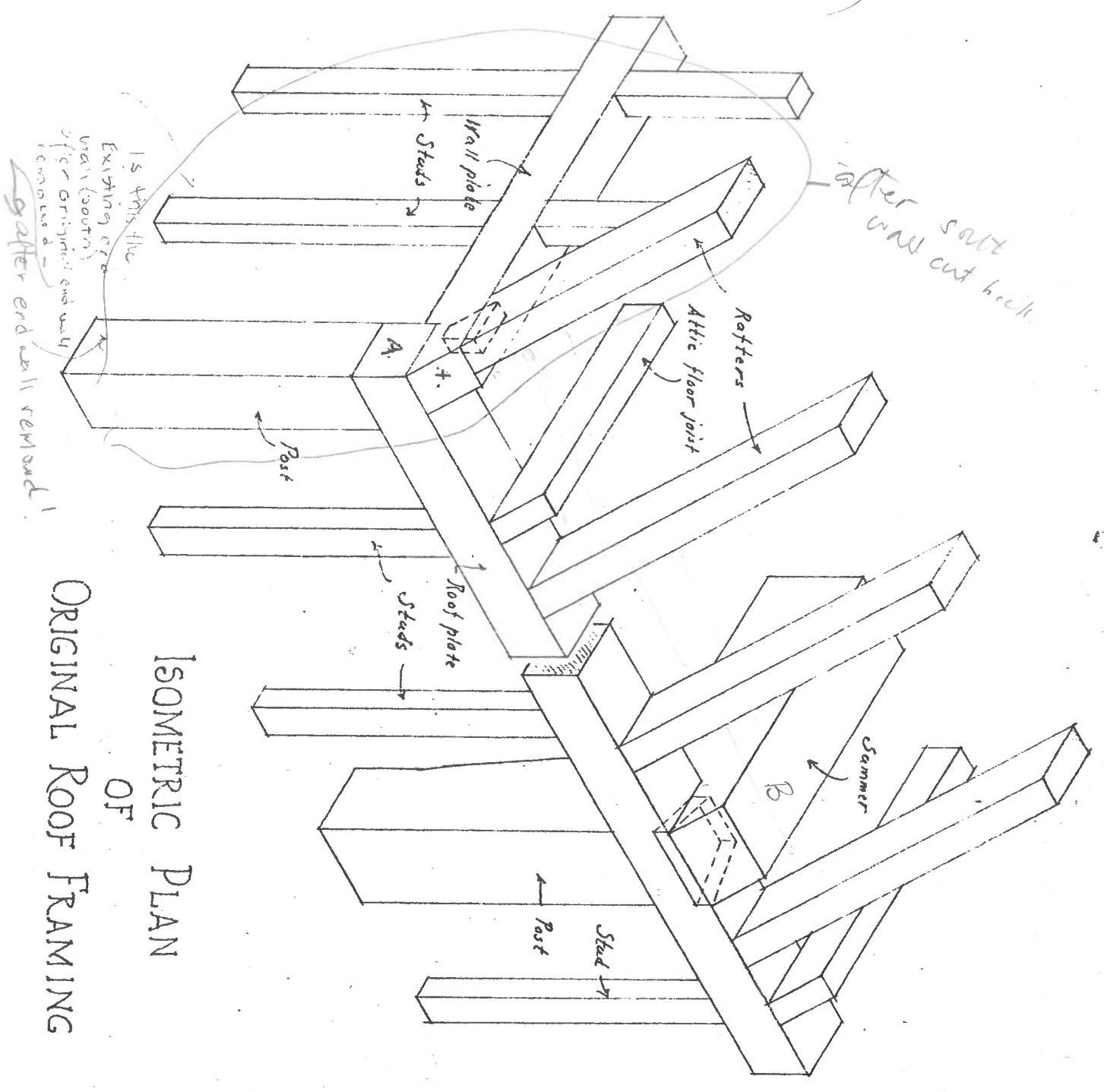
Double post
refer to

ISOMETRIC PLAN
OF
ORIGINAL FRAMING

MEASUREMENTS?

station
Construction
is original
A.U.D.

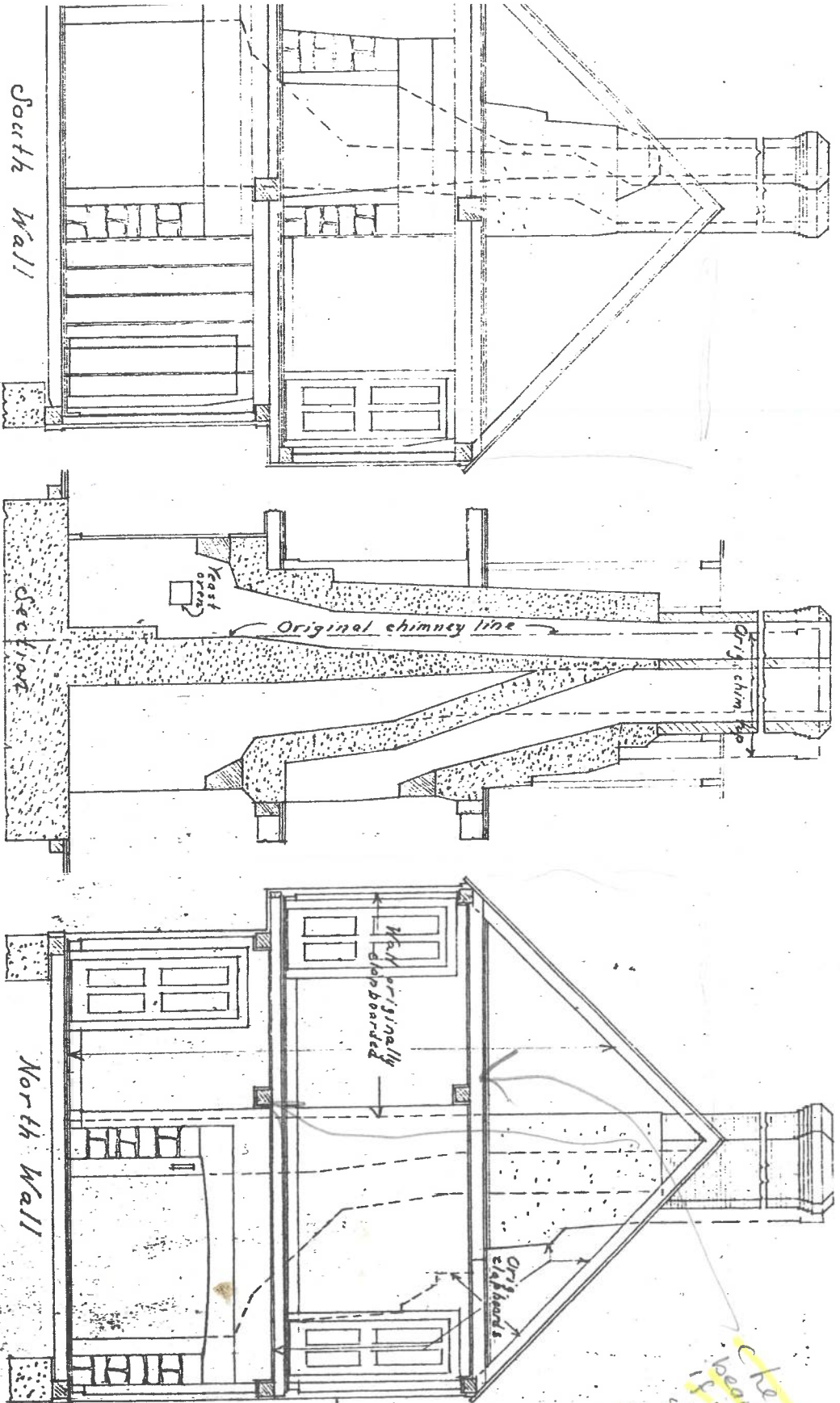
original
AWB here?



ISOMETRIC PLAN
OF
ORIGINAL ROOF FRAMING

Copy

THE CHIMNEY AT CAJACET EIGHTEENTH CENTURY STATUS



J.H.C.

Fig. 16

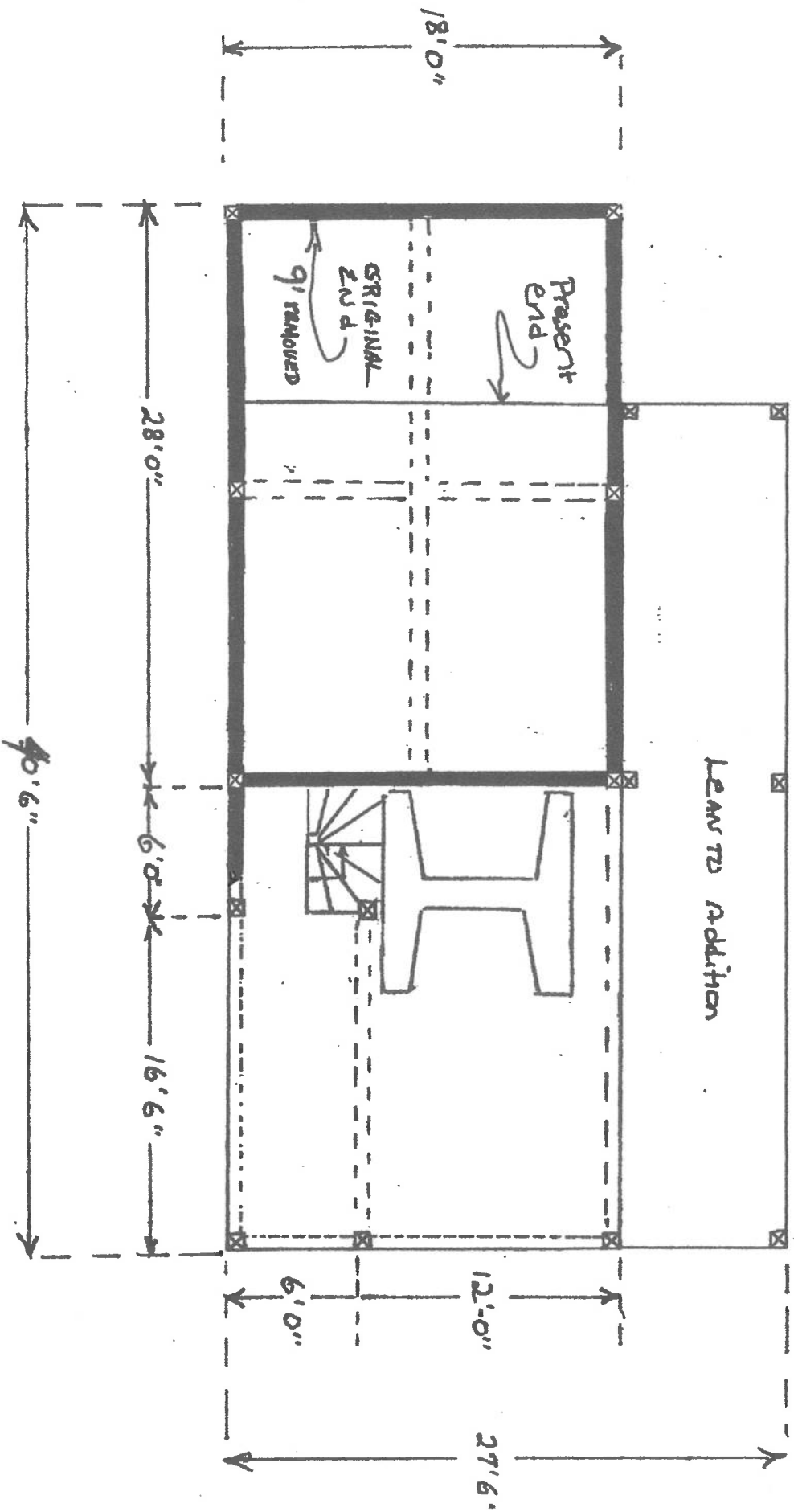
Check Hub
beam to see
if in hall
Stairway
also top of
2nd floor over keep
How it over
constructed
North end
second floor

copy

CADACEY - THOMAS PAINE
 FIRST FLOOR FRAME
 AWB-2003

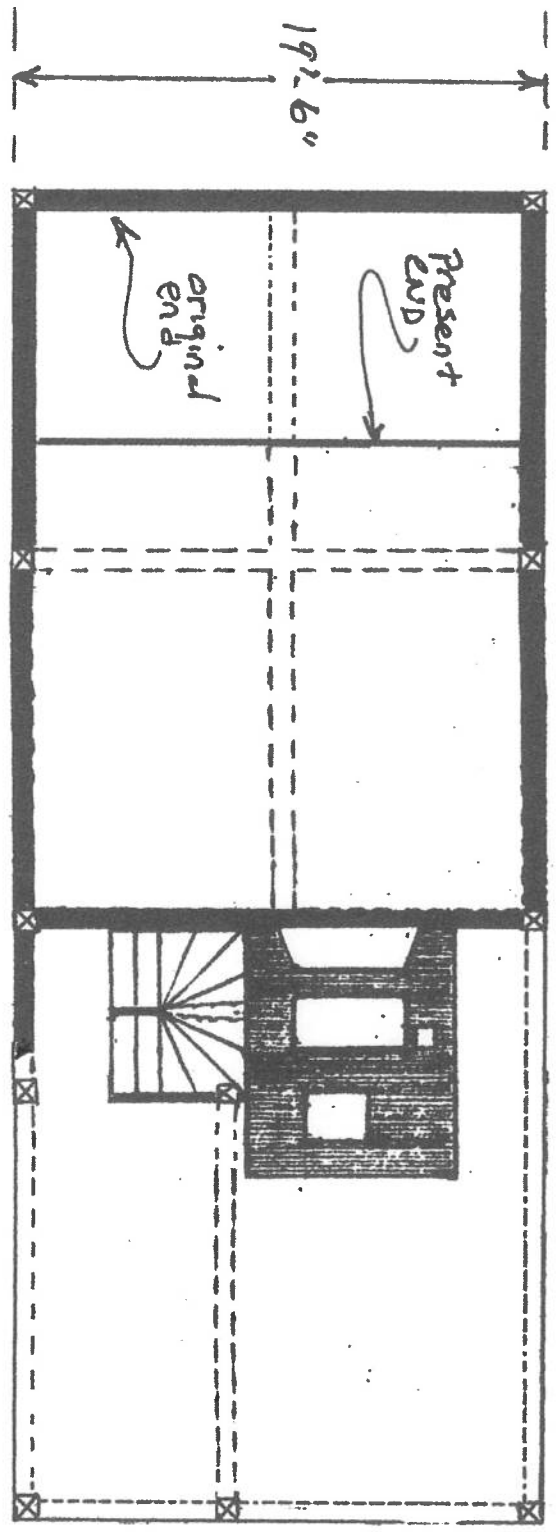
N →

LEANS TO ADDITION



CAJACET, THOMAS PAINE
SECOND FLOOR FRAME
AWB-2005

N →



Tusk Tenon - which side. ~~best~~ X

Cellar

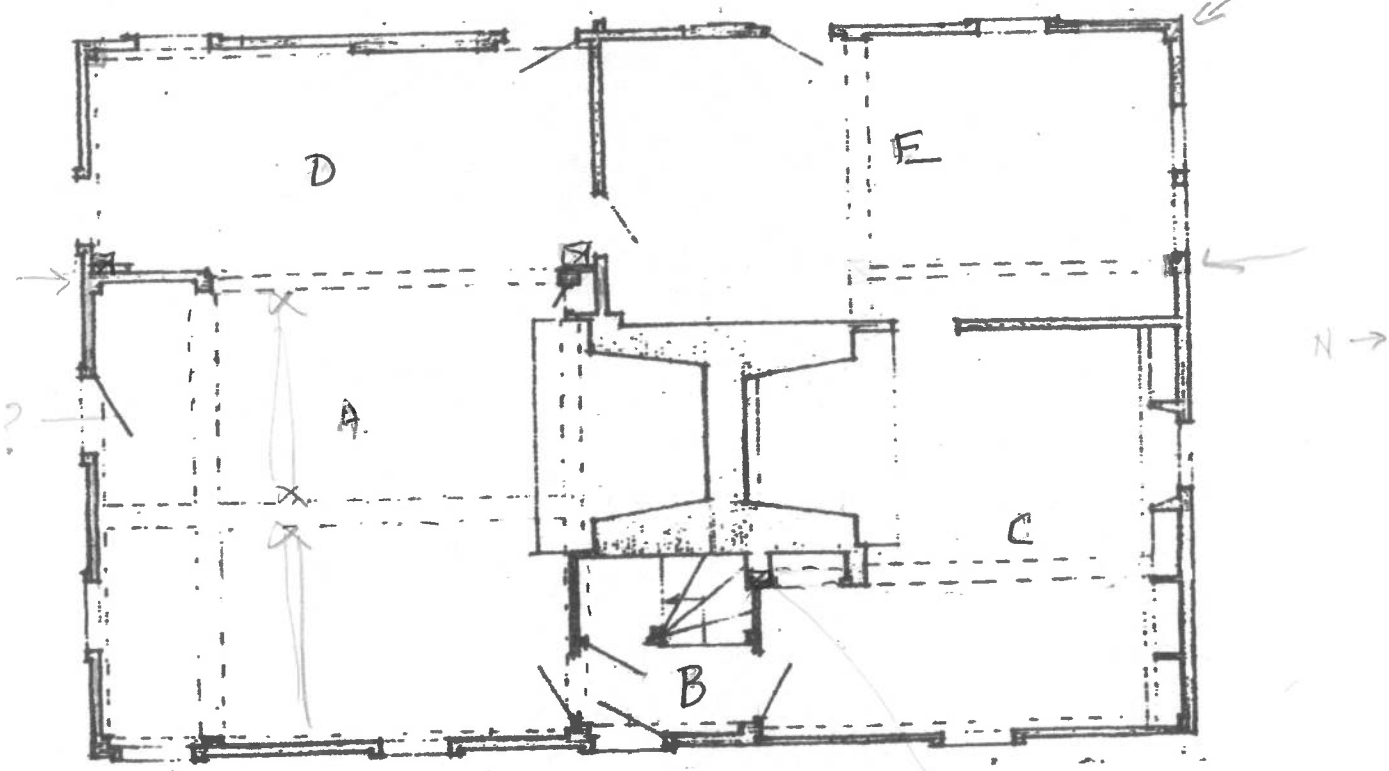
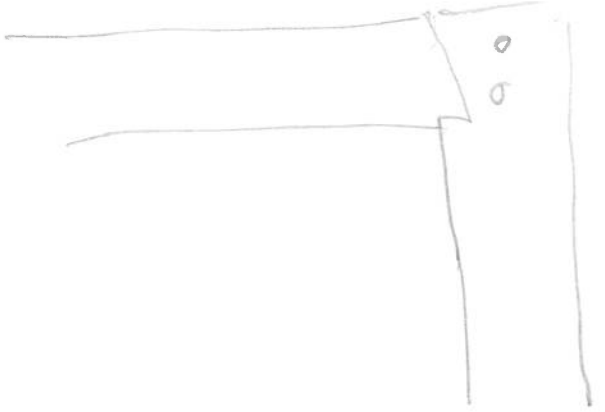
Summer Joinery -

Hall - Type nail in stair way

Hall - scarf joint

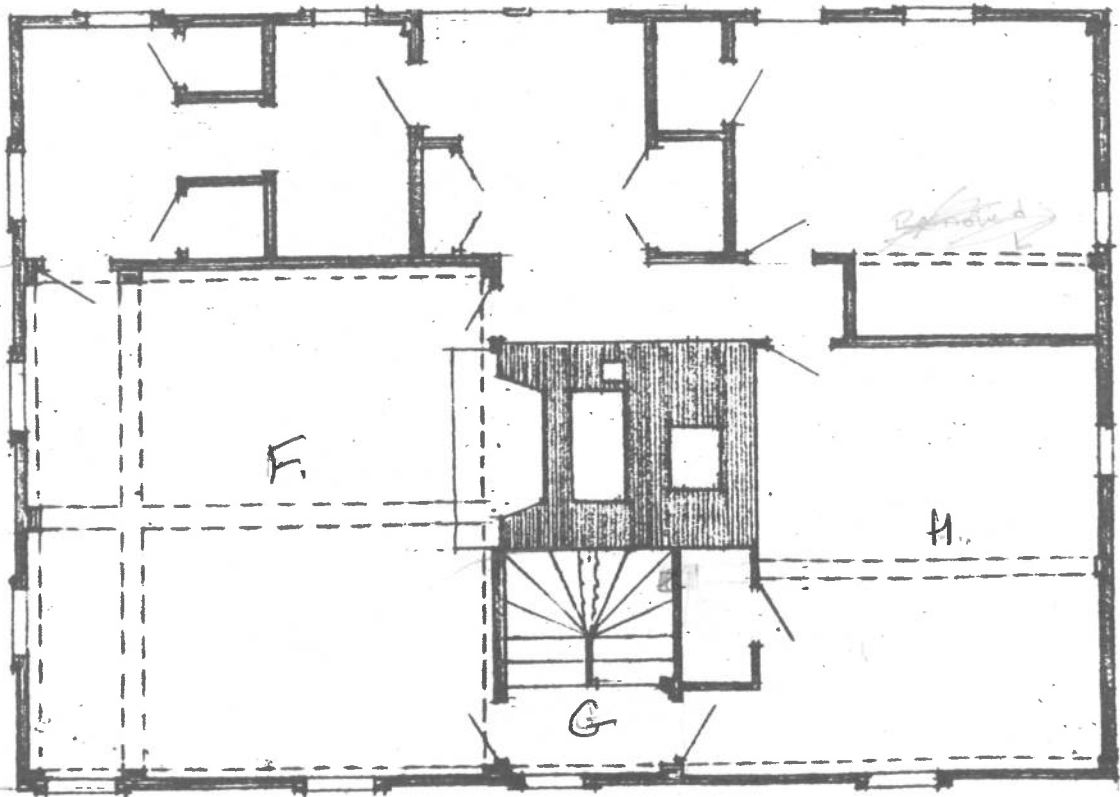
D - double posts

Joist + Summer size



First Floor

Tusk Tenon - which side
 Hall-Scarf Joint. Chamber stop - Does it go into F.
 Construction of Suez Pen^g - size also
 of rafters/joists - ~~East~~ wall

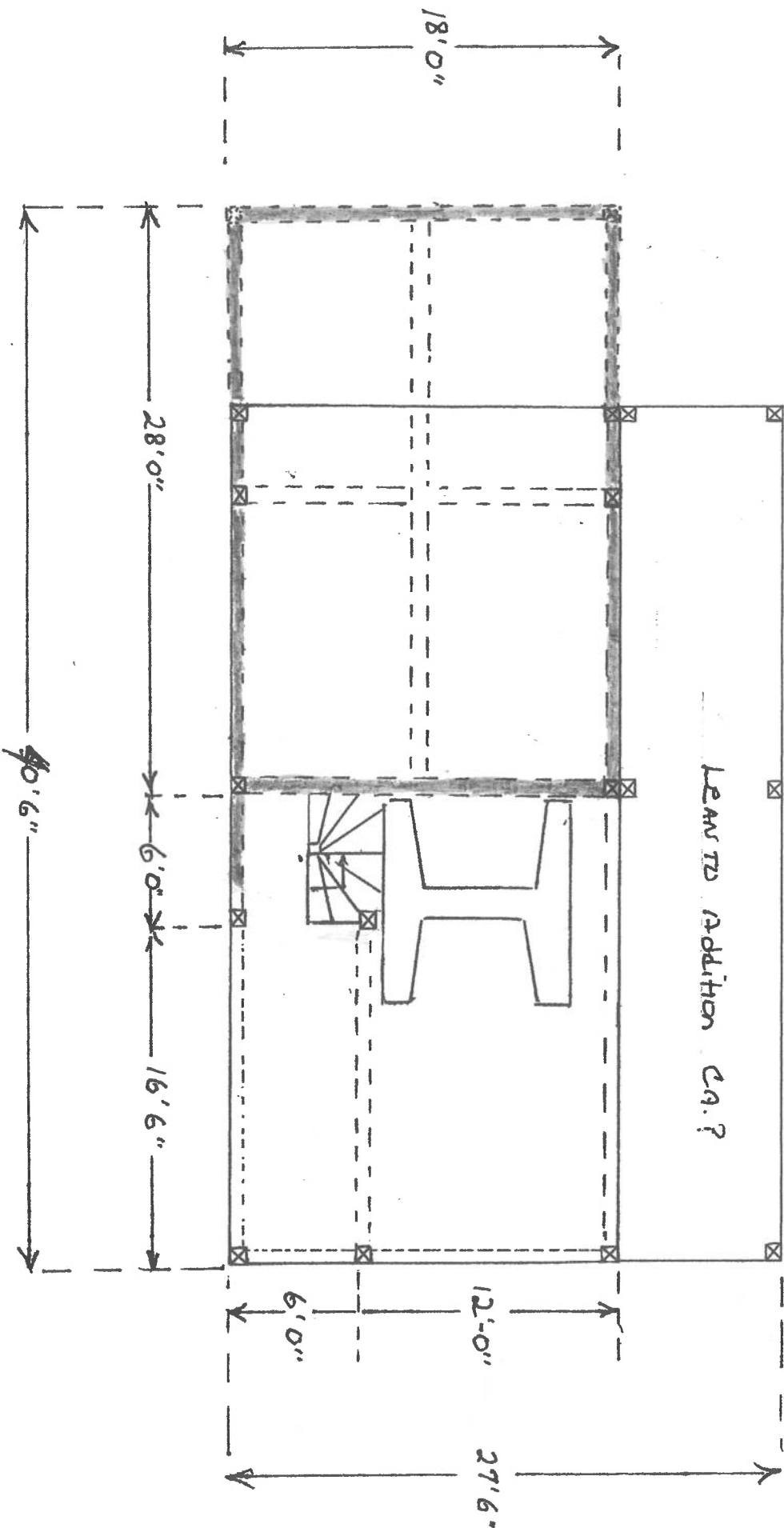


Second Floor

N →

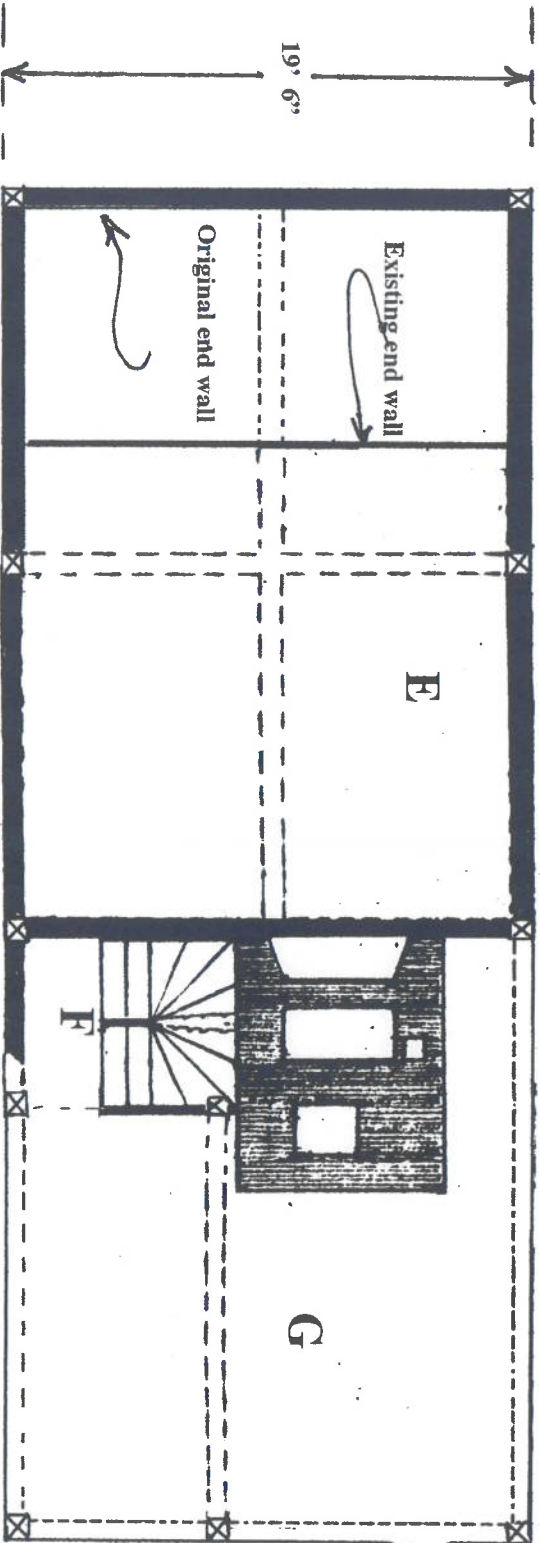
1st Floor

LEAN TO Addition CA.?



Captain Thomas Paine House
Jamestown, RI
Second Floor - Third floor framing

AWBaker 2003



Draft only
AUB

Paint Damages for gable
corner facade

