

Roger Williams University

DOCS@RWU

Documentation

Isaac Collins House/Farm: Maps and Drawings

Follow this and additional works at: https://docs.rwu.edu/baker_documentation



Part of the [Historic Preservation and Conservation Commons](#)

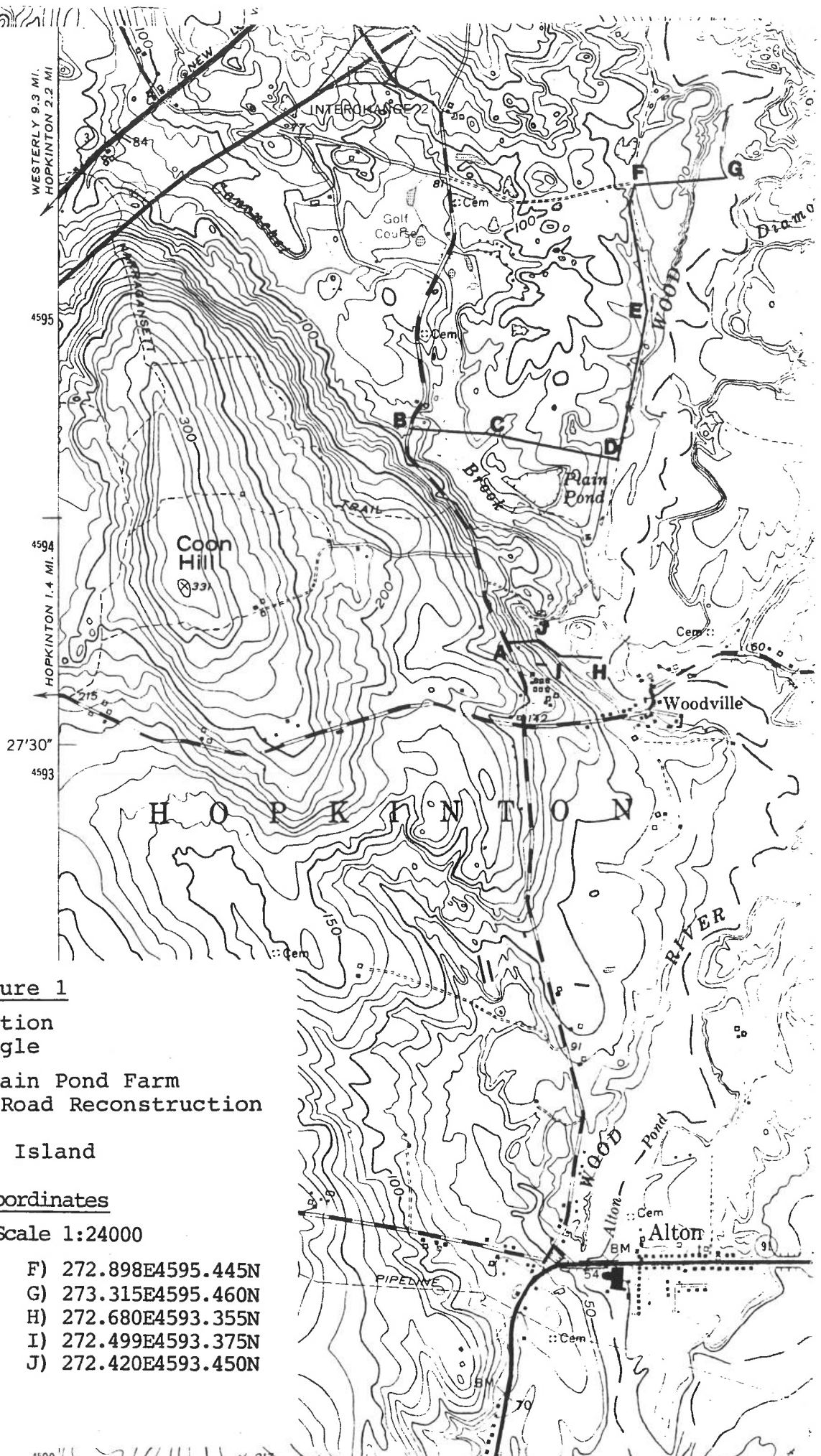


Figure 1

Topographic Location
Carolina Quadrangle

Isaac Collins/Plain Pond Farm
Rockville-Alton Road Reconstruction

Hopkinton, Rhode Island

UTM Coordinates

Zone 19; Scale 1:24000

- | | |
|----------------------|----------------------|
| A) 272.280E4593.450N | F) 272.898E4595.445N |
| B) 271.855E4594.410N | G) 273.315E4595.460N |
| C) 272.260E4594.370N | H) 272.680E4593.355N |
| D) 272.782E4594.350N | I) 272.499E4593.375N |
| E) 272.940E4594.890N | J) 272.420E4593.450N |

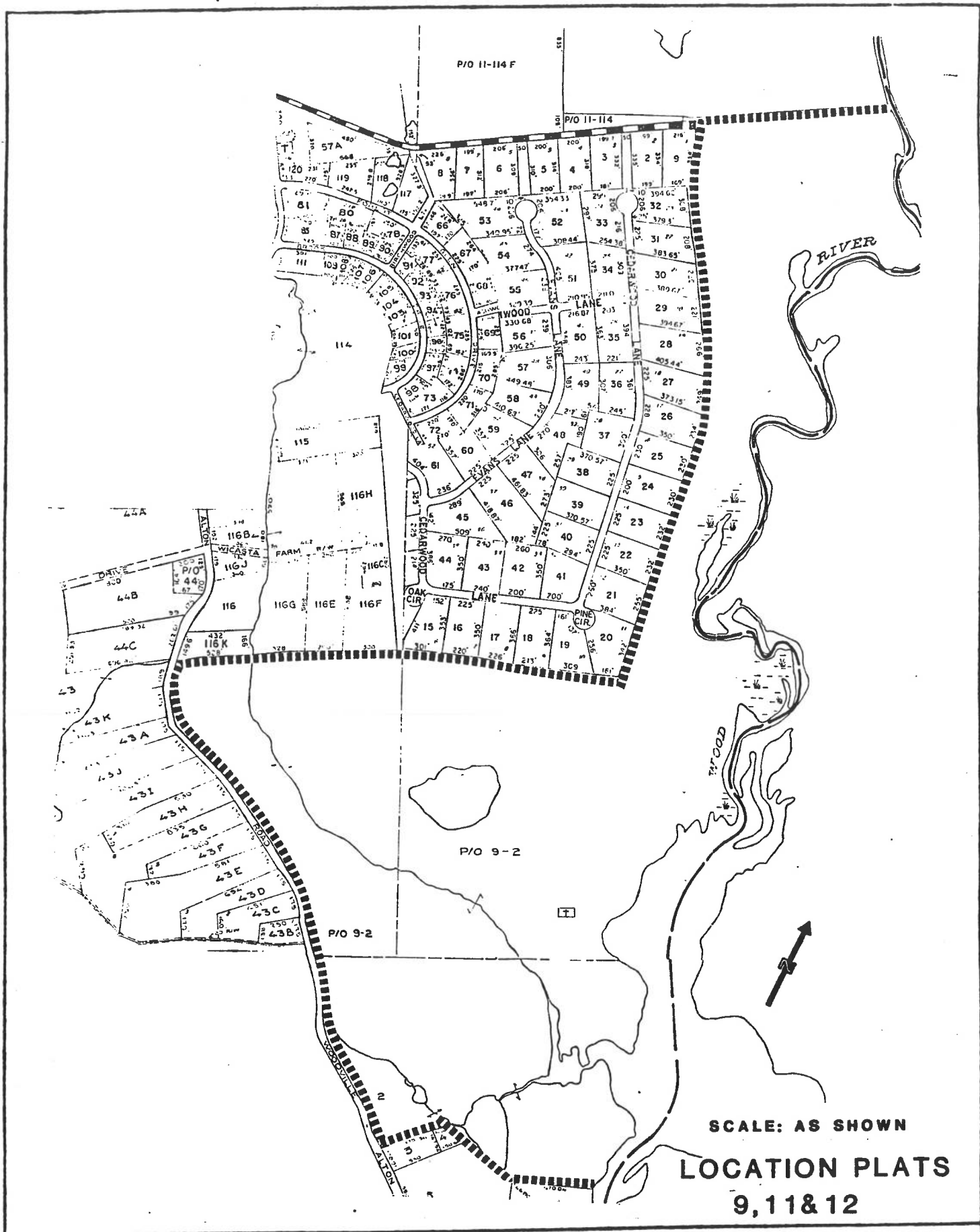
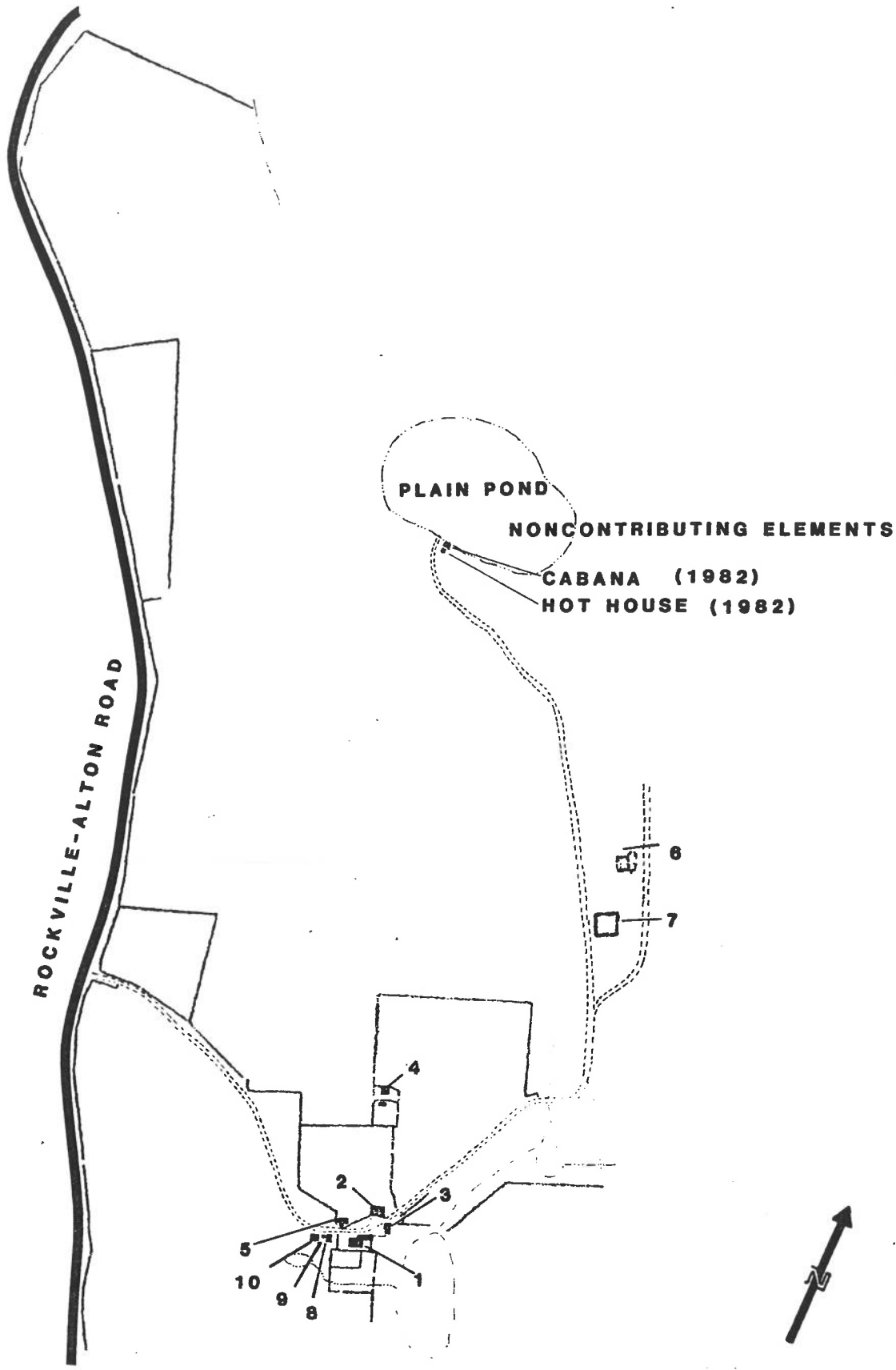


FIGURE 2

ISAAC COLLINS/PLAIN POND FARM
ROCKVILLE-ALTON ROAD RECONSTRUCTION
HOPKINTON, RHODE ISLAND

SOURCE: *Wilbur Smith and Associates*

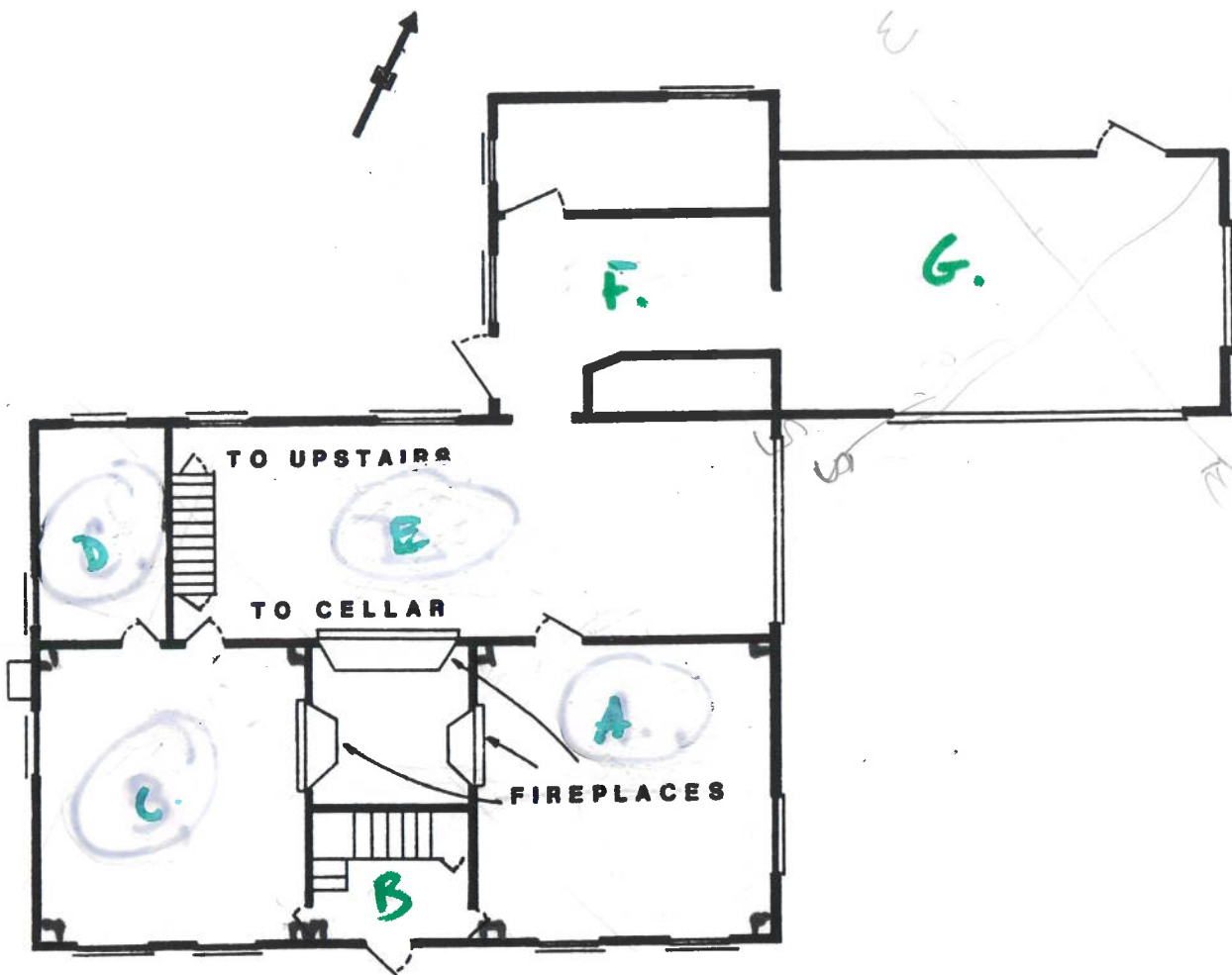


SCALE
400'

FARM COMPLEX/FIELD SYSTEM

FIGURE 3
ISAAC COLLINS/PLAIN POND FARM
ROCKVILLE-ALTON ROAD RECONSTRUCTION
HOPKINTON, RHODE ISLAND

SOURCE: *Wilbur Smith and Associates*



STRUCTURE #1, FIGURE 3

FLOOR PLAN
FIRST FLOOR

SCALE: 1"=10'

FIGURE 4

ISAAC COLLINS/PLAIN POND FARM
ROCKVILLE-ALTON ROAD RECONSTRUCTION
HOPKINTON, RHODE ISLAND

SOURCE: *Wilbur Smith and Associates*



STRUCTURE #1, FIGURE 3

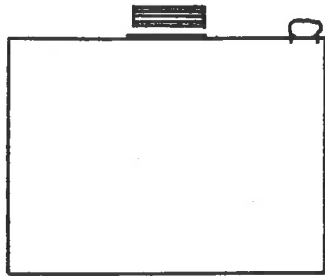
FLOOR PLAN
SECOND FLOOR

SCALE: 1"=10'

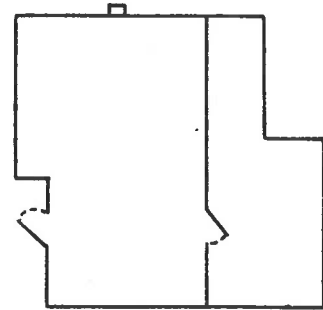
FIGURE 5

ISAAC COLLINS/PLAIN POND FARM
ROCKVILLE-ALTON ROAD RECONSTRUCTION
HOPKINTON, RHODE ISLAND

SOURCE: *Wilbur Smith and Associates*



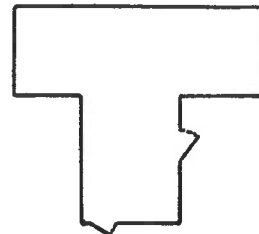
BARN/GARAGE
(#2, FIGURE 3)



"LIBRARY"
(#3, FIGURE 3)



BARN (RESTORED)
(#4, FIGURE 3)



GUEST HOUSE
(#5, FIGURE 3)

SCALE
20 FT

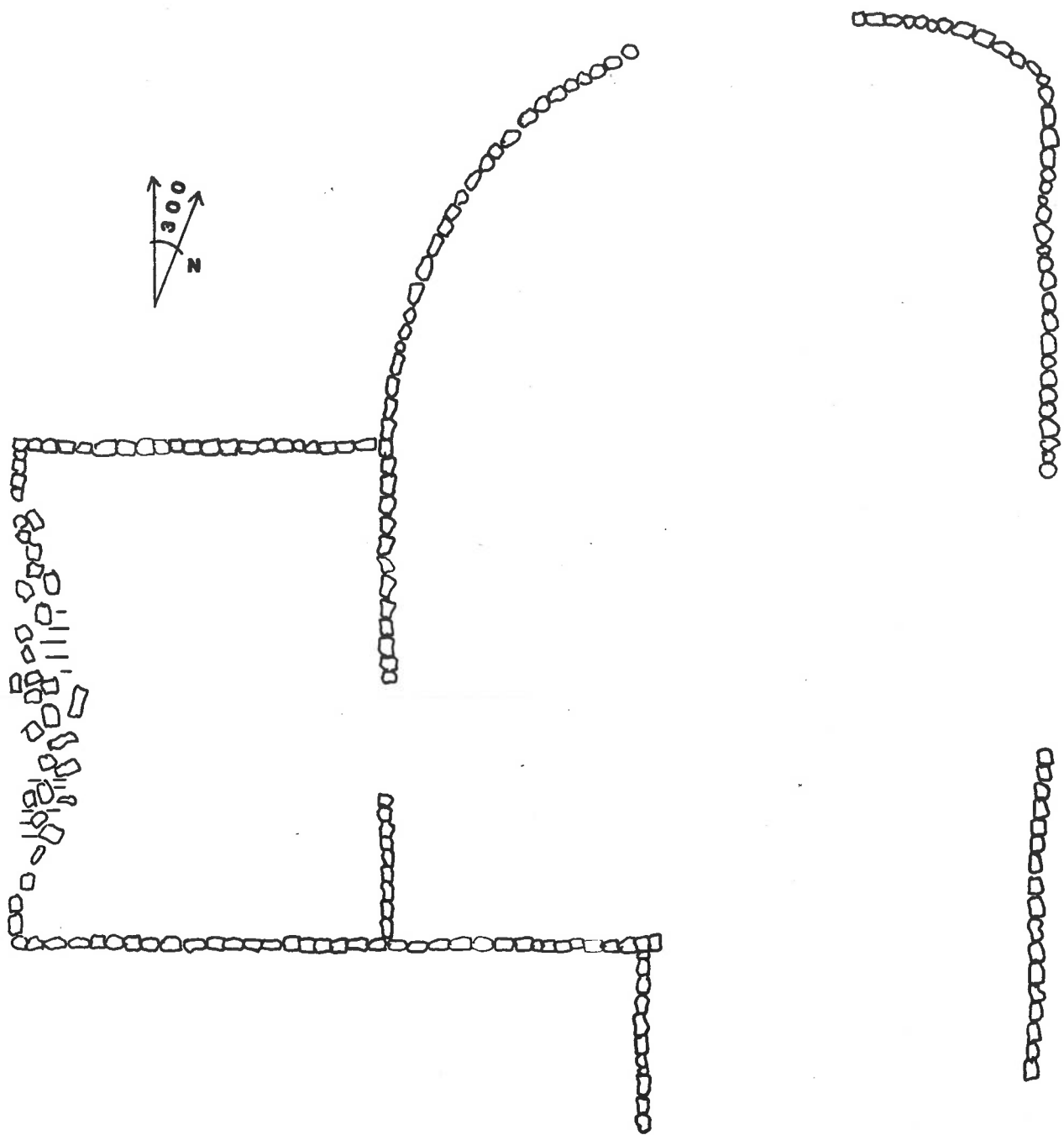
MAJOR OUTBUILDINGS



FIGURE 6

ISAAC COLLINS/PLAIN POND FARM
ROCKVILLE-ALTON ROAD RECONSTRUCTION
HOPKINTON, RHODE ISLAND

SOURCE: *Wilbur Smith and Associates*



ISAAC COLLINS ICE HOUSE SITE

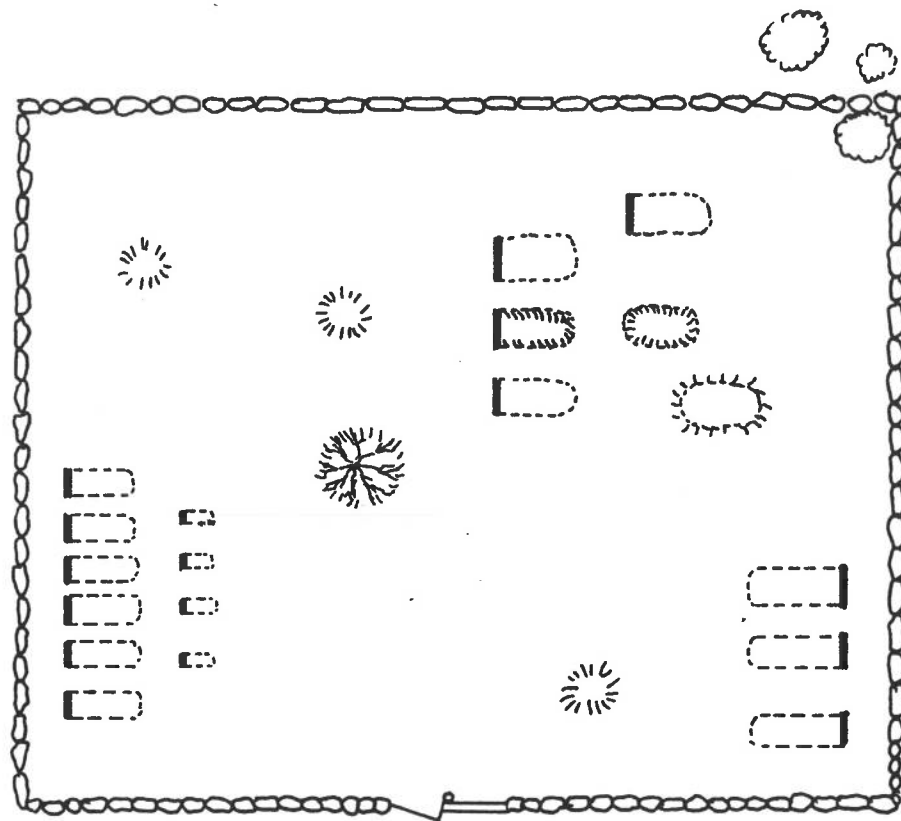
(#6, FIGURE 3)

SCALE
2 m

FIGURE 7

**ISAAC COLLINS/PLAIN POND FARM
ROCKVILLE-ALTON ROAD RECONSTRUCTION
HOPKINTON, RHODE ISLAND**

SOURCE: *Wilbur Smith and Associates*



ISAAC COLLINS HISTORIC CEMETERY

ISAAC COLLINS HISTORIC
CEMETERY

(#7, FIGURE 3)

SCALE
5 m



FIGURE 8

ISAAC COLLINS/PLAIN POND FARM
ROCKVILLE-ALTON ROAD RECONSTRUCTION
HOPKINTON, RHODE ISLAND

SOURCE: *Wilbur Smith and Associates*