

Roger Williams University

DOCS@RWU

---

Law School Blogs

School of Law Publications

---

3-22-2016

## Trending @ RWU Law: Professor Diana Hassel's Post: "Our Long Anticipated Experiential Campus Is Now a Reality": 03/22/2016

Diana Hassel

*Roger Williams University School of Law*

Follow this and additional works at: [https://docs.rwu.edu/law\\_pubs\\_blogs](https://docs.rwu.edu/law_pubs_blogs)



Part of the [Legal Education Commons](#)

---

### Recommended Citation

Hassel, Diana, "Trending @ RWU Law: Professor Diana Hassel's Post: "Our Long Anticipated Experiential Campus Is Now a Reality": 03/22/2016" (2016). *Law School Blogs*. 438.

[https://docs.rwu.edu/law\\_pubs\\_blogs/438](https://docs.rwu.edu/law_pubs_blogs/438)

This Document is brought to you for free and open access by the School of Law Publications at DOCS@RWU. It has been accepted for inclusion in Law School Blogs by an authorized administrator of DOCS@RWU. For more information, please contact [mwu@rwu.edu](mailto:mwu@rwu.edu).

# ***Professor Diana Hassel's Post***

"Our long anticipated Experiential Campus is now a reality..."

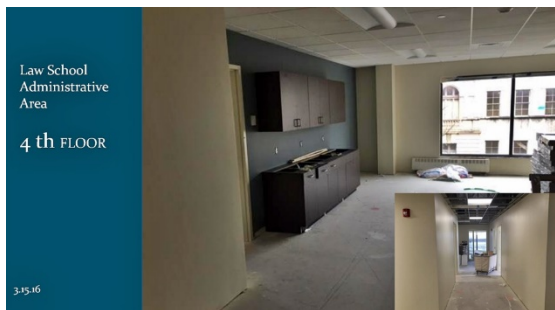
Posted by Diana Hassel on 03/22/2016 at 05:02 PM



The drywall is up, the paints are being applied, and the furniture is ordered for the new RWU Law Experiential Campus in Providence at One Empire Plaza.

Beginning in June 2016, the law school will have a newly built-out and expanded space to house its Law Clinics, conduct Clinical Externship seminars, and offer an increased array of experiential and doctrinal courses.

Our four In-House Law Clinics – Business Start Up, Criminal Defense, Immigration, and Veterans Disability Appeals – will all have offices on the fourth floor of One Empire Plaza. Classes and meetings for those clinics will be held at the same location. Our five Clinical Externships – Corporate Counsel; Judicial; Public Interest; Environmental Law/Land Use; and Prosecution – will meet weekly on the fourth floor at times convenient for those working in Providence.



Classes of special interest to students in their third year – legal practice skills classes such as Mediation and Trial Advocacy as well as core doctrinal courses – are scheduled this fall for the afternoon and evening in Providence. These classes in Providence will make scheduling easier for students who are already spending a significant part of the day in the city participating in clinics, externships, or employment. Rather than having to travel back to Bristol for a class, a student can just make her way over to One Empire Plaza.

The RWU Law Experiential Campus also allows the law school to expand its distance learning options. A number of classes each semester will be taught simultaneously in Bristol and in Providence. Made possible by classrooms equipped with distance learning technology, an instructor will be able to conduct a class in Bristol and have students in Providence participate fully in the class. This option of taking a class at either campus will add another layer of flexibility to scheduling for students engaged in the community.

Administrative staff will also have a regular presence at the Providence campus. The Feinstein Center for Pro Bono and Experiential Education, the Pro Bono Collaborative, the Marine Affairs Institute, the Career Development Office, as well as the Admissions Office will have regular weekly hours in Providence. Students will be able to conveniently access the information and support needed from the administration while taking classes in Providence.

The long anticipated RWU Experiential Campus is now a reality. RWU Law can now offer the best of both worlds – a beautiful seaside campus in Bristol and a robust urban presence in Providence.